



# Egerton Gardens, London SW3

Price £2,150 per week - Unfurnished









## Description

A newly refurbished first and second floor maisonette in this popular street in the heart of Knightsbridge. The property consists of three double bedrooms, one bathroom (en suite), one shower room, guest cloakroom, two reception rooms and a fully fitted kitchen. The flat benefits from direct lift access, has high ceilings throughout and offers bright and spacious living accommodation. Egerton Gardens is excellently situated within walking distance of both Knightsbridge and South Kensington.

Please note that this property is offered on an unfurnished basis, the furniture shown in the photos is not included.

Rent is payable on a monthly basis and you may be required to pay more than a month's rent in advance, depending on your circumstances. You will be required to pay a 1 week holding deposit following a successful offer. Utility bills, council tax, telephone line and broadband are not included in the rent. As well as paying the rent, you may also be required to make some additional permitted payments. If your tenancy does not qualify as an AST, additional fees may apply. Please visit [jll.co.uk/fees](http://jll.co.uk/fees) for details of fees which may be payable when renting a property.

- 3 Double bedrooms
- 1 Bathroom (en suite)
- 1 Shower room
- Guest cloakroom
- 2 Reception rooms
- Fully fitted kitchen
- Unfurnished
- Approx. 2142 sq ft (199 sq m)
- EPC: C
- Council Tax: Band H

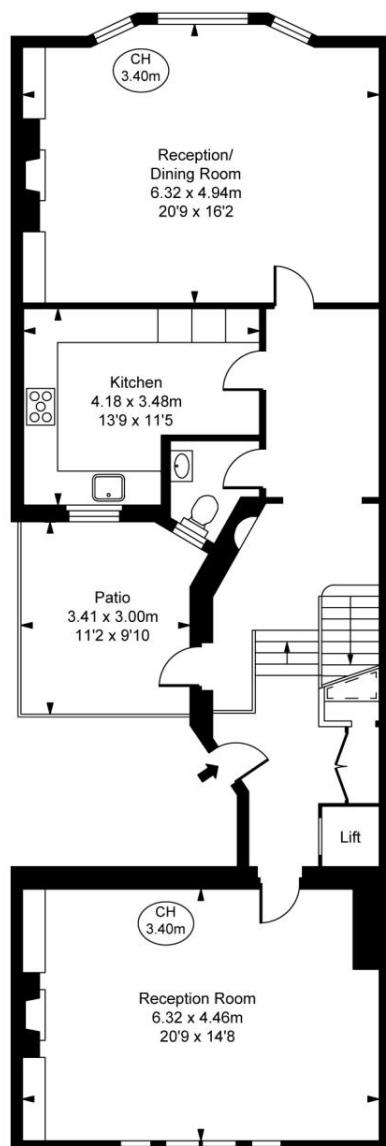
# Floorplan

2,142 sq ft | 199 sq m

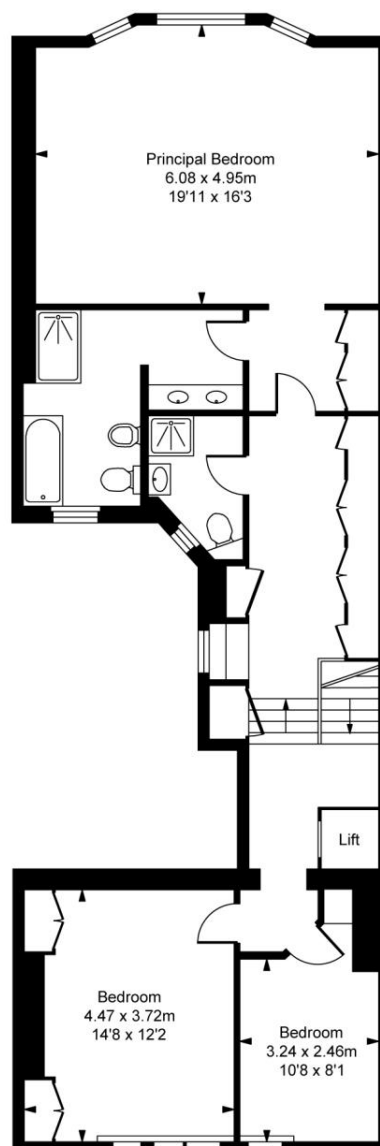
Egerton Gardens, SW3  
Approximate Gross Internal Area  
192.50 sq m / 2,072 sq ft  
(Excluding Lift)



( Including restricted height  
under 1.5m □ □ □ □ )  
( CH = Ceiling Heights )



First Floor  
Approximate Gross Internal Area  
97.36 sq m / 1,048 sq ft



Second Floor  
Approximate Gross Internal Area  
95.14 sq m / 1,024 sq ft

This plan is not to scale. It is for guidance and not for valuation purposes.  
All measurements and areas are approximate only, and have been prepared in accordance with the current edition of the RICS Code of Measuring Practice.  
© Fulham Performance

Knightsbridge  
174 Brompton Road,  
London SW3 1HP  
+4420 7306 1600  
SalesKnightsbridge@jll.com

*Urban living, your way.*

[jll.co.uk/residential](http://jll.co.uk/residential)

© 2019 Jones Lang LaSalle IP, Inc. All rights reserved. All information contained herein is from sources deemed reliable; however, no representation or warranty is made to the accuracy thereof.

