



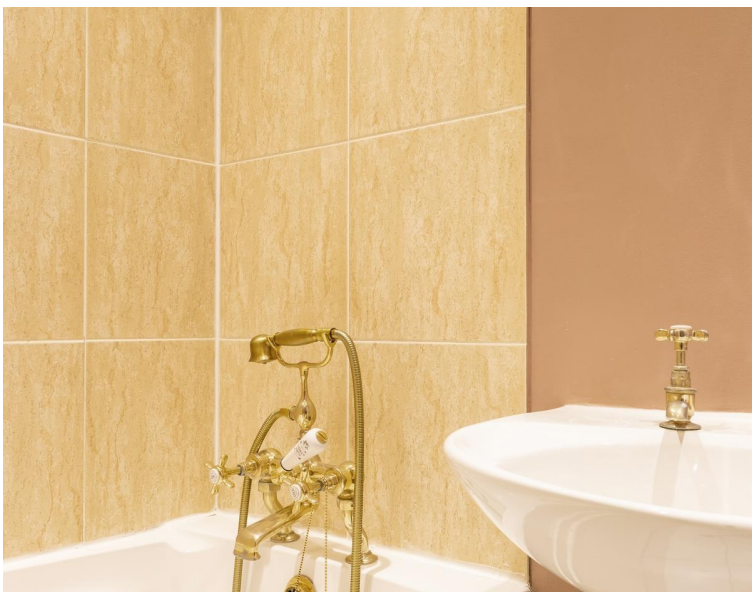
## Ennismore Gardens, London SW7

Price £1,269 per week - Furnished









## Description

Located in the prestigious address of Ennismore Gardens, this bright and spacious property offers a sophisticated and elegant living experience.

This stunning residence is situated on the second floor (with lift) of a classic Victorian-era building, exuding charm and character at every turn.

Outside, residents can enjoy the tranquility of Ennismore Gardens, a beautifully landscaped communal garden accessible exclusively to residents. The location is also within close proximity to Knightsbridge, offering an array of high-end shopping, dining, and entertainment options.

Perfectly blending contemporary comfort with classic charm, this property provides a refined and exquisite living experience in one of London's most coveted neighbourhoods.

Rent is payable on a monthly basis and you may be required to pay more than a month's rent in advance, depending on your circumstances. You will be required to pay a 1 week holding deposit following a successful offer. Utility bills, council tax, telephone line and broadband are not included in the rent. As well as paying the rent, you may also be required to make som

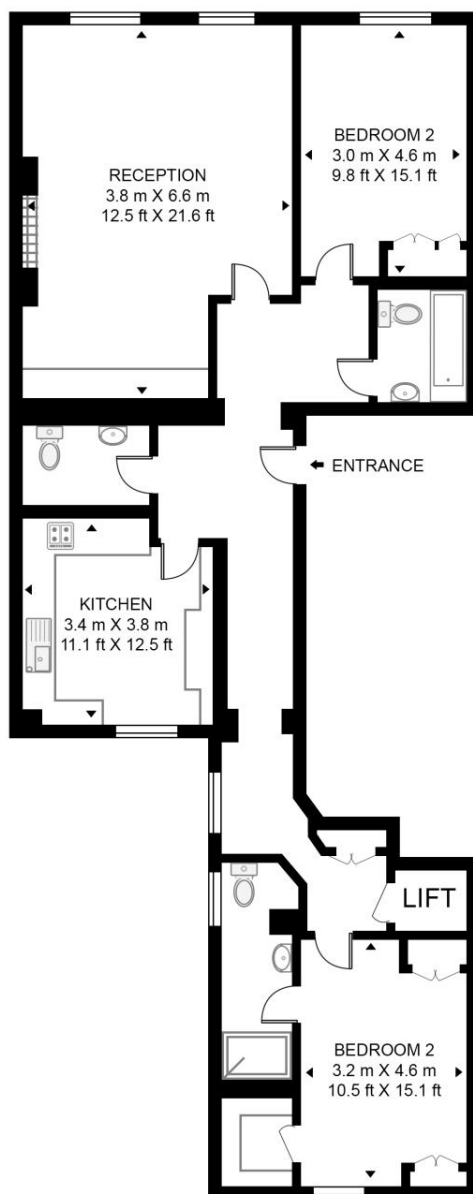
- Two bedrooms
- Two bathrooms (one ensuite)
- Bright kitchen
- Second floor with lift
- Communal gardens
- Approx. 1,280 sq ft (119 sq m)
- EPC: C
- Council Tax: Band G
- Holding deposit: £1,269.23
- Deposit: £7,615

# Floorplan

1,280 sq ft | 119 sq m

## ENNISMORE GARDENS

APPROXIMATE GROSS INTERNAL FLOOR AREA 1280 SQ.FT (118.9 SQ.M)



SECOND FLOOR



This floor plan has been defined by the RICS Code of Measurement. This floor plan and all others are for approximate representative purposes only and upon usage is agreed to as such by the client.

WWW: [hdvirtualart.com](http://hdvirtualart.com) | TEL: 0203.974.1567 | EMAIL: [info@hdvirtualart.com](mailto:info@hdvirtualart.com)

Knightsbridge  
174 Brompton Road,  
London SW3 1HP  
+4420 7306 1600  
[SalesKnightsbridge@jll.com](mailto:SalesKnightsbridge@jll.com)

*Urban living, your way.*

[jll.co.uk/residential](http://jll.co.uk/residential)

© 2019 Jones Lang LaSalle IP, Inc. All rights reserved. All information contained herein is from sources deemed reliable; however, no representation or warranty is made to the accuracy thereof.

