

Ennismore Gardens, London SW7

Price £1,730 per week - Furnished







Description

A stunning flat located in the prestigious address of Ennismore Gardens, this bright and spacious property offers a sophisticated and elegant living experience.

This stunning residence is situated on the first floor (with lift) of a classic Victorian-era building, exuding charm and character at every turn. The property comprises a large reception room with separate study area, a fitted kitchen, two family bathrooms, balcony access from three different rooms and a half landing with access to a laundry room and storage room.

Outside, residents can enjoy the tranquility of Ennismore Gardens, a beautifully landscaped communal garden accessible exclusively to residents. The location is also within close proximity to Knightsbridge, offering an array of high-end shopping, dining, and entertainment options.

Rent is payable on a monthly basis and you may be required to pay more than a month's rent in advance, depending on your circumstances. You will be required to pay a 1 week holding deposit following a successful offer. Utility bills, council tax, telephone line and broadband are not included in the rent. As well as paying the rent, you may also be required to make some additional permitted payments. If your tenancy does not q

- Reception room
- Study area
- Fitted kitchen
- Large bedroom
- Storage room
- Laundry room
- Balcony access from 3 rooms
- First floor
- Approx. 1,432 sq ft (133 sq m)
- EPC: D

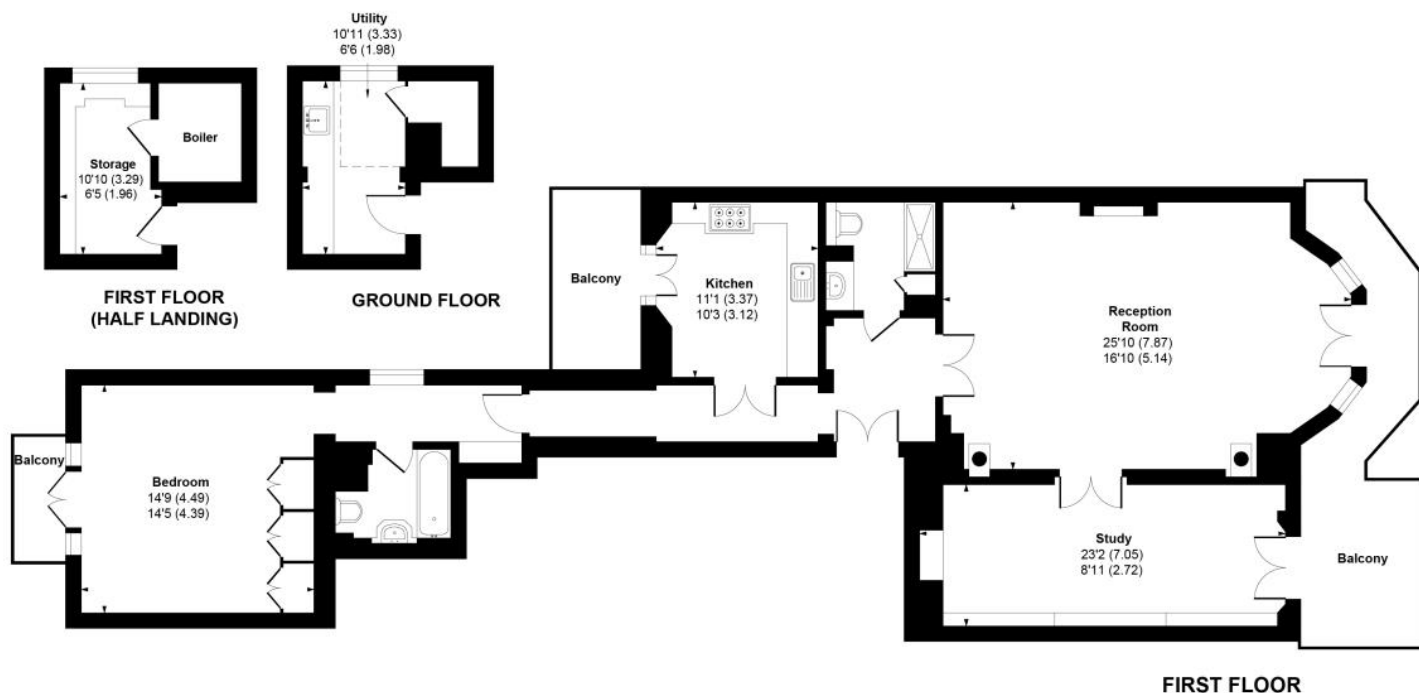
Floorplan

1,432 sq ft | 133 sq m

Ennismore Gardens, SW7

Approximate internal area = 1432 sq ft / 133 sq m

Balcony = 248 sq ft / 23 sq m



Not to scale, for guidance only and must not be relied upon as a statement of fact.
All measurements and areas are approximate only

Knightsbridge
174 Brompton Road,
London SW3 1HP
+4420 7306 1600
SalesKnightsbridge@jll.com

Urban living, your way.

jll.co.uk/residential

© 2019 Jones Lang LaSalle IP, Inc. All rights reserved. All information contained herein is from sources deemed reliable; however, no representation or warranty is made to the accuracy thereof.

