

# ALBERT COURT EAST BLOCK

KENSINGTON GORE | SW7





This distinguished four-bedroom lateral apartment, set within the coveted East Block of Albert Court, offers refined living in one of Prime Central London's most prestigious addresses.



Bathed in natural light and showcasing sweeping panoramic rooftop views across South Kensington, the residence is arranged over two levels and finished to the highest standard, exuding timeless elegance and grandeur. The interiors are beautifully appointed in a neutral palette, featuring exquisite parquet hardwood flooring throughout the principal reception rooms, complemented by decorative cornicing, a striking ornate fireplace, and impressive high ceilings.

The generous double reception rooms are designed for both grand entertaining and relaxed living, seamlessly connecting to the outdoors and drawing in abundant light through large windows.

#### Facilities

Four double bedrooms | En suite bathroom  
Two en suite shower rooms | Family bathroom  
Guest WC | Large reception room | Dining room  
Kitchen | Parking | Approx: 2766 sq ft (257 sq m)





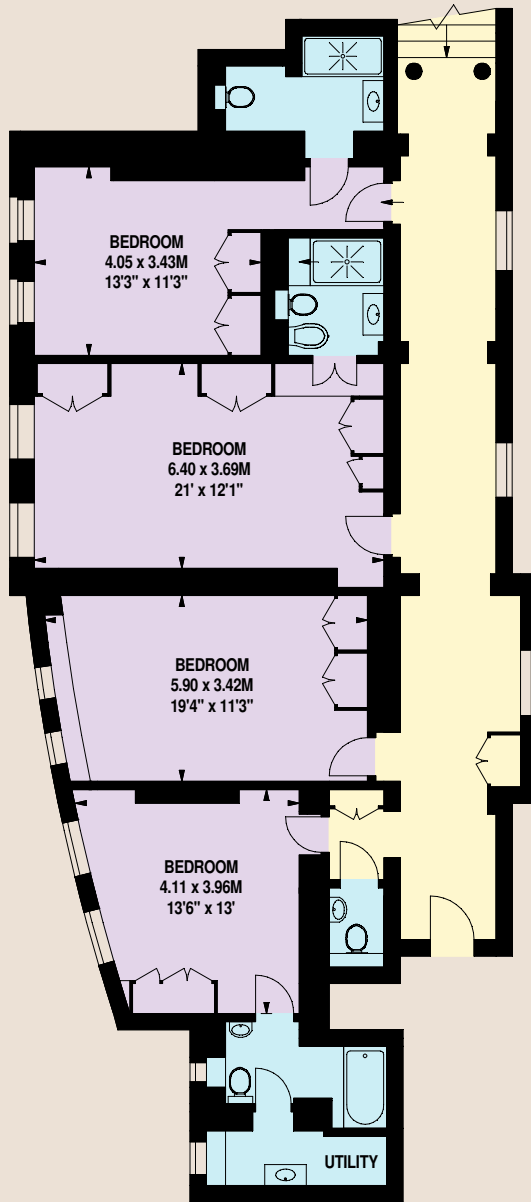
The property's enviable location places you moments from the world-renowned Royal Albert Hall, with immediate access to the celebrated restaurants, boutiques, and cafés of Kensington, South Kensington, and Knightsbridge. Hyde Park's expansive green spaces are just 200 metres away, providing a tranquil retreat in the heart of the city.

Albert Court stands as a hallmark of architectural distinction, offering residents a lifestyle synonymous with sophistication and exclusivity in South Kensington and Chelsea—London's most desirable neighbourhoods, long favoured by the social elite.

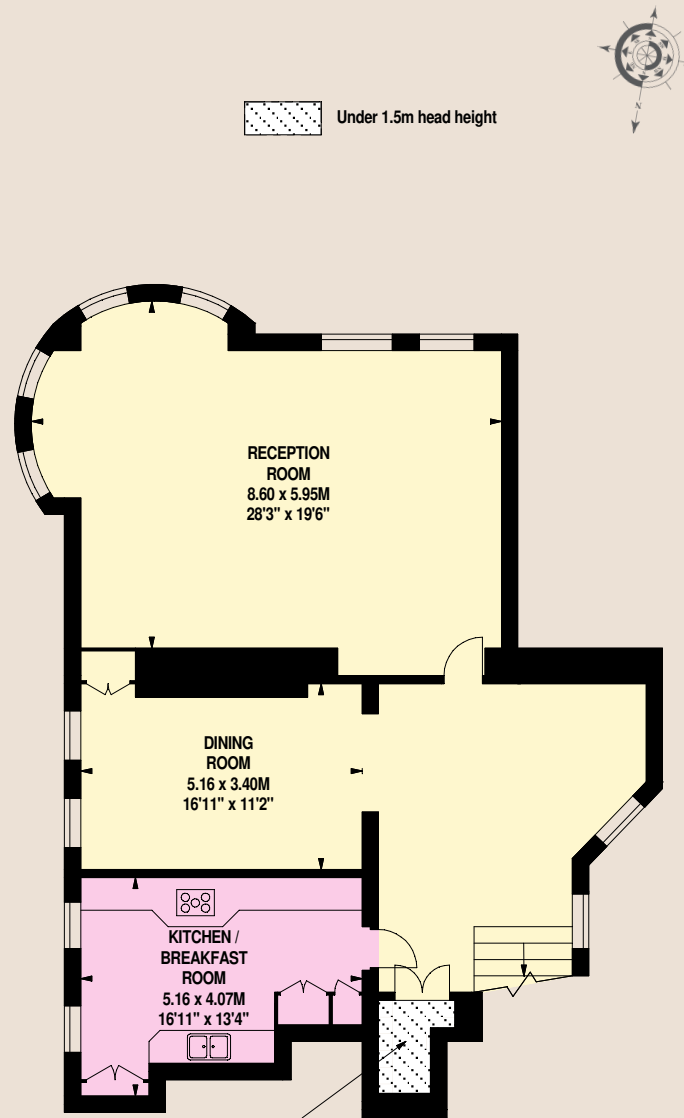
**Gross Internal Area (Approx.)**

259 sq m - 2,788 sq ft

Including Storage Area of Approximately 2 sq m - 22 sq ft



Sixth Floor



Sixth Floor  
Continued

STORAGE

**Price:** £6,850,000

**Lease length:** 974 years (expires 29th September 2999)

**Service charge:** £ 32956 Per annum

**Ground rent:** £600 Per annum

**Local Authority:** City of Westminster London

**Council tax:** H

**EPC:** D

JLL Knightsbridge  
174 Brompton Road,  
London, SW3 1HP  
020 7306 1610

