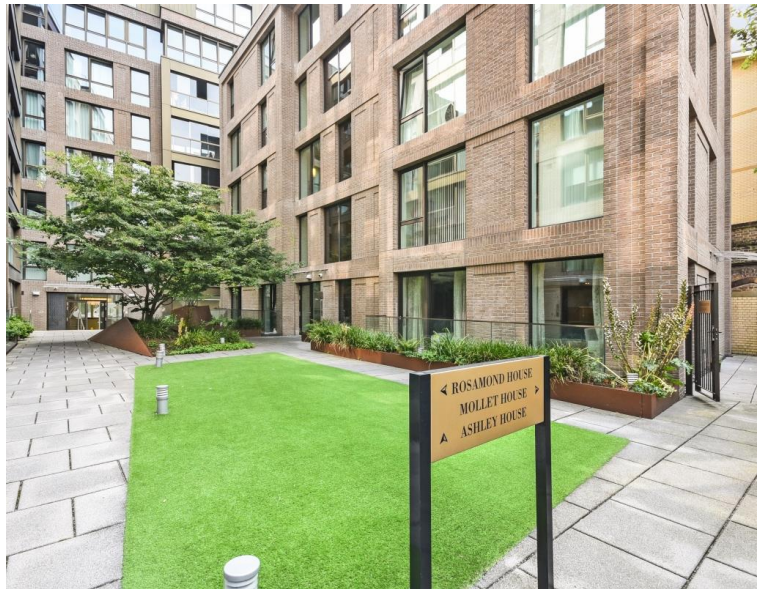
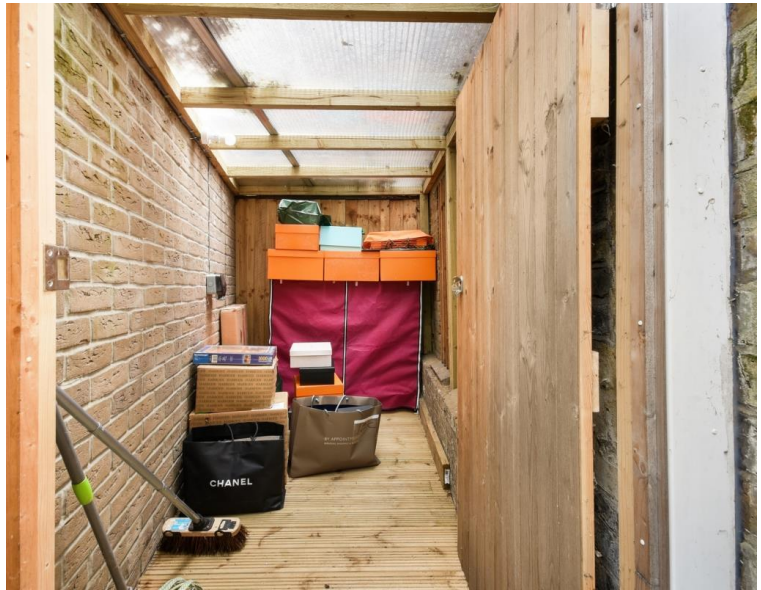


Monck Street, London SW1P

Price £675 per week - Furnished







Description

A bright and charming ground floor apartment in the heart of Westminster. This well-designed home boasts plenty of living space, perfectly balancing comfort and style.

The property features a spacious bedroom, complemented by a separate modern bathroom, and an open-plan reception and kitchen area, ideal for entertaining or relaxing.

The property further benefits from a private terrace and garden, wrapping around two sides of the apartment and a private gated entrance.

Rent is payable on a monthly basis and you may be required to pay more than a month's rent in advance, depending on your circumstances. You will be required to pay a 1 week holding deposit following a successful offer. Utility bills, council tax, telephone line and broadband are not included in the rent. As well as paying the rent, you may also be required to make some additional permitted payments. If your tenancy does not qualify as an AST, additional fees may apply. Please visit jll.co.uk/fees for details of fees which may be payable when renting a property.

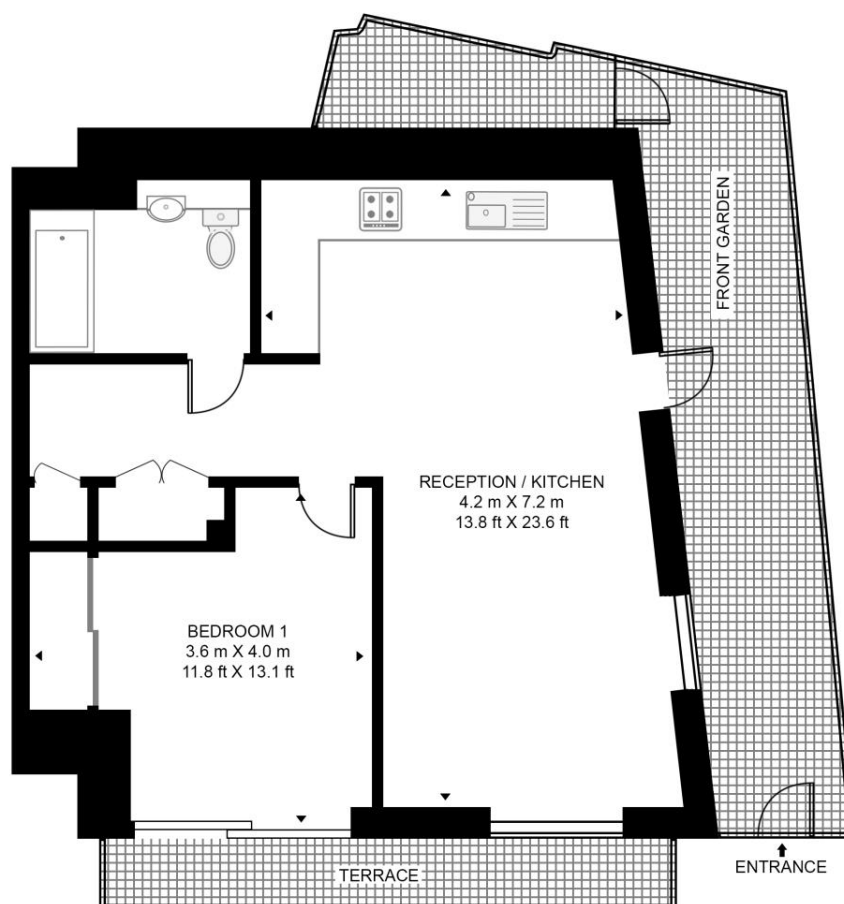
- One bedroom
- Bathroom
- Open plan kitchen
- Reception
- Private gate entrance
- Ground floor
- Furnished
- Approx. 545 sq ft (50.6 sq m)
- EPC: B
- Council Tax: Band E

Floorplan

545 sq ft | 51 sq m

ELIZABETH COURT

APPROXIMATE GROSS INTERNAL FLOOR AREA 545 SQ.FT (50.6 SQ.M)



GROUND FLOOR



This floor plan has been defined by the RICS Code of Measurement. This floor plan and all others are for approximate representative purposes only and upon usage is agreed to as such by the client.

WWW: hdvirtualart.com | TEL: 0203.974.1567 | EMAIL: info@hdvirtualart.com

Knightsbridge
174 Brompton Road,
London SW3 1HP
+4420 7306 1600
SalesKnightsbridge@jll.com

Urban living, your way.

jll.co.uk/residential

© 2019 Jones Lang LaSalle IP, Inc. All rights reserved. All information contained herein is from sources deemed reliable; however, no representation or warranty is made to the accuracy thereof.

