



## Egerton Gardens Mews, London SW3

Price £725 per week - Furnished









## Description

A first floor apartment (no lift) in this quiet mews in the heart of Knightsbridge. The property consists of one double bedroom, one bathroom, reception room and a fully fitted, open plan kitchen. The flat is presented in excellent order and further benefits from wooden flooring throughout and contemporary furnishings. Egerton Gardens Mews is conveniently located moments from the many shopping and transport facilities of Knightsbridge and South Kensington.

Rent is payable on a monthly basis and you may be required to pay more than a month's rent in advance, depending on your circumstances. You will be required to pay a 1 week holding deposit following a successful offer. Utility bills, council tax, telephone line and broadband are not included in the rent. As well as paying the rent, you may also be required to make some additional permitted payments. If your tenancy does not qualify as an AST, additional fees may apply. Please visit [jll.co.uk/fees](http://jll.co.uk/fees) for details of fees which may be payable when renting a property.

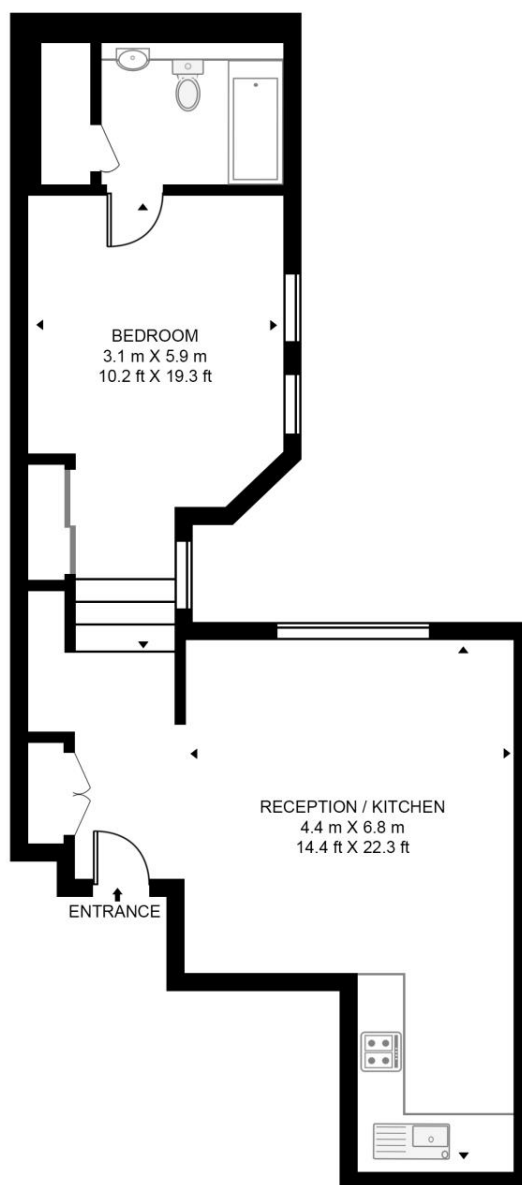
- 1 Double bedroom
- 1 Bathroom
- Reception room
- Open plan kitchen
- First floor
- Approx. 540 sq ft (50.2 sq m)
- Furnished
- EPC: C
- Council Tax: Band D
- Holding deposit: £725

# Floorplan

540 sq ft | 50 sq m

## EGERTON GARDENS MEWS

APPROXIMATE GROSS INTERNAL FLOOR AREA 540 SQ.FT (50.2 SQ.M)



FIRST FLOOR



This floor plan has been defined by the RICS Code of Measurement. This floor plan and all others are for approximate representative purposes only and upon usage is agreed to as such by the client.  
WWW: [hdvirtualart.com](http://hdvirtualart.com) | TEL: 0203.974.1567 | EMAIL: [info@hdvirtualart.com](mailto:info@hdvirtualart.com)

Knightsbridge  
174 Brompton Road,  
London SW3 1HP  
+4420 7306 1600  
[SalesKnightsbridge@jll.com](mailto:SalesKnightsbridge@jll.com)

*Urban living, your way.*

[jll.co.uk/residential](http://jll.co.uk/residential)

© 2019 Jones Lang LaSalle IP, Inc. All rights reserved. All information contained herein is from sources deemed reliable; however, no representation or warranty is made to the accuracy thereof.

