

WELLINGTON COURT

KNIGHTSBRIDGE SW1X







WELLINGTON COURT

KNIGHTSBRIDGE SW1X

This incredibly special and luxurious three or four-bedroom apartment is located on the second floor of Wellington Court, a prestigious building in Knightsbridge. The magnificent double reception room offers stunning direct views of Hyde Park.

The property features high ceilings and ornate details characteristic of the period, creating an impressive entertaining space ideal for a Central London home or pied-à-terre.

The building provides 24-hour portage and lift access, ensuring convenience and security for residents. Its prime location in Knightsbridge offers easy access to world-renowned amenities

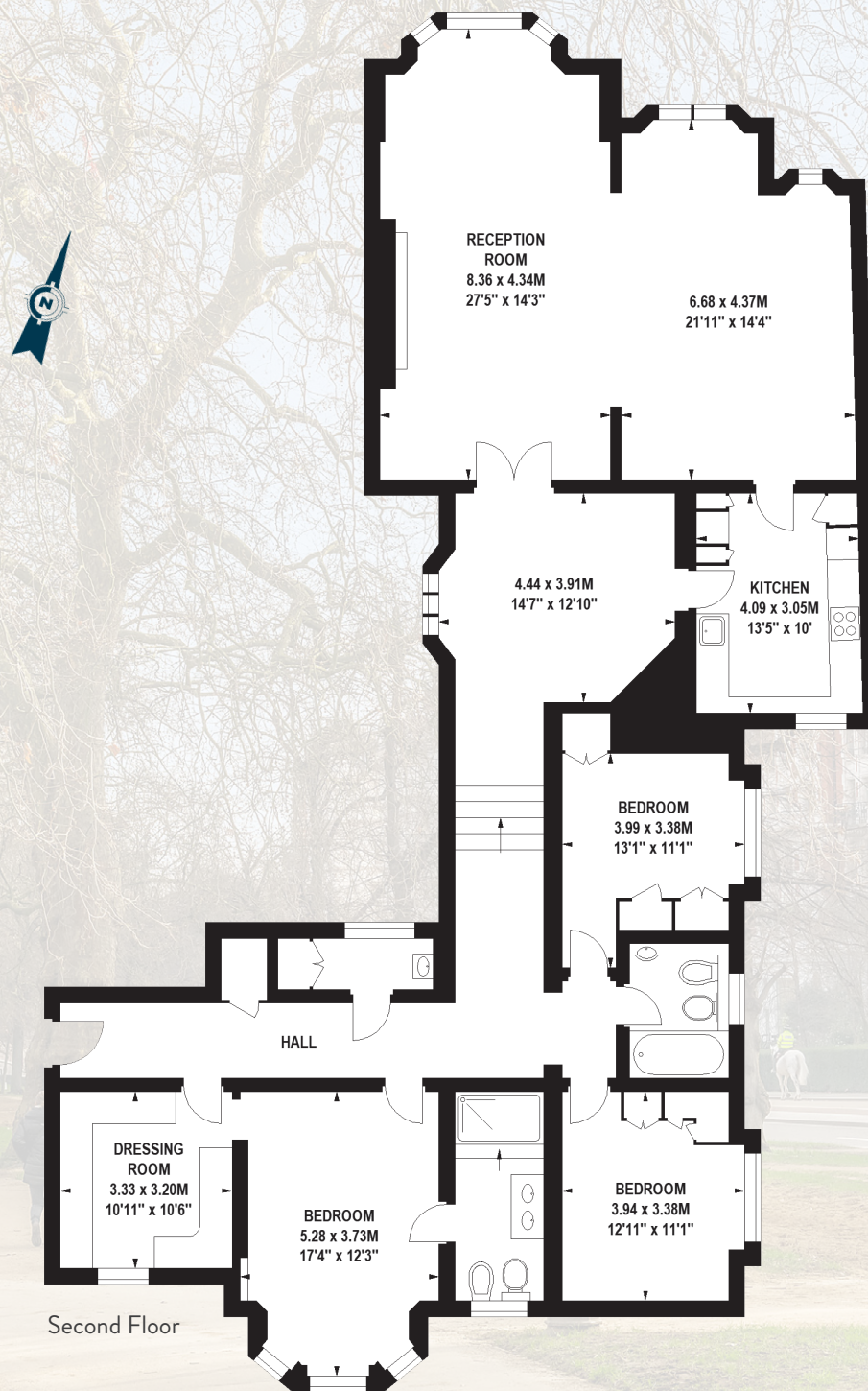
The area is known for its luxury lifestyle, high-end restaurants, and proximity to cultural attractions such as the Science Museum and the Victoria and Albert Museum. With its combination of elegant living space, stunning views, and prime location, this apartment represents a rare opportunity in one of London's most sought-after neighbourhoods.

FACILITIES

- Three double bedrooms
- Two bathrooms (one en-suite)
- A cloakroom
- A dressing room (formerly the fourth bedroom)
- A spacious dining area
- A separate kitchen
- A double reception room with Hyde Park views
- Harrods department store (300 meters away)
- Designer boutiques along Sloane Street.
- Hyde Park (1.1 km)
- Knightsbridge Underground Station (6 minutes walk)







APPROX. GROSS INTERNAL AREA

2,147 sq ft / 200 sq m

TERMS

Price: £6,500,000

Tenure: Leasehold, 137 years remaining (expires 28th September 2162)

Service Charge: £2,2521 per annum

Ground Rent: £900

Local Authority: City of Westminster

Council Tax Band: H

EPC Rating: D

JLL Knightsbridge
174 Brompton Road,
London, SW3 1HP
020 7306 1610



These particulars are for general information only and do not constitute any part of an offer or contract. All statements contained therein are made without responsibility on the part of the vendors or lessors and are not to be relied upon as statement or representation of fact. Intending purchasers or lessees must satisfy themselves, by inspection, or otherwise, as to the correctness of each of the statements or dimensions contained in these particulars.