



Ennismore Gardens, London SW7

Guide price £895,000 Leasehold





Description

A two bedroom top floor apartment located in the heart of Knightsbridge moments away from Hyde Park.

The property has a bright west facing reception room, a separate kitchen, a bathroom, wooden floors, access to charming communal gardens and has the added benefits of being sold with no onward chain, on a long lease and the possibility to use some of the loft space as a further room or an abundance of storage.

Ennismore Gardens is located to the south of the 350 acres of open space in Hyde Park. The A4 (M4) offers swift access towards the West, Heathrow Airport and the M25.

The world famous restaurants and boutiques of Knightsbridge, Belgravia and Chelsea are within walking distance along with the renowned Royal Albert Hall, V&A, Natural History Museum, Science Museum and Harrods.

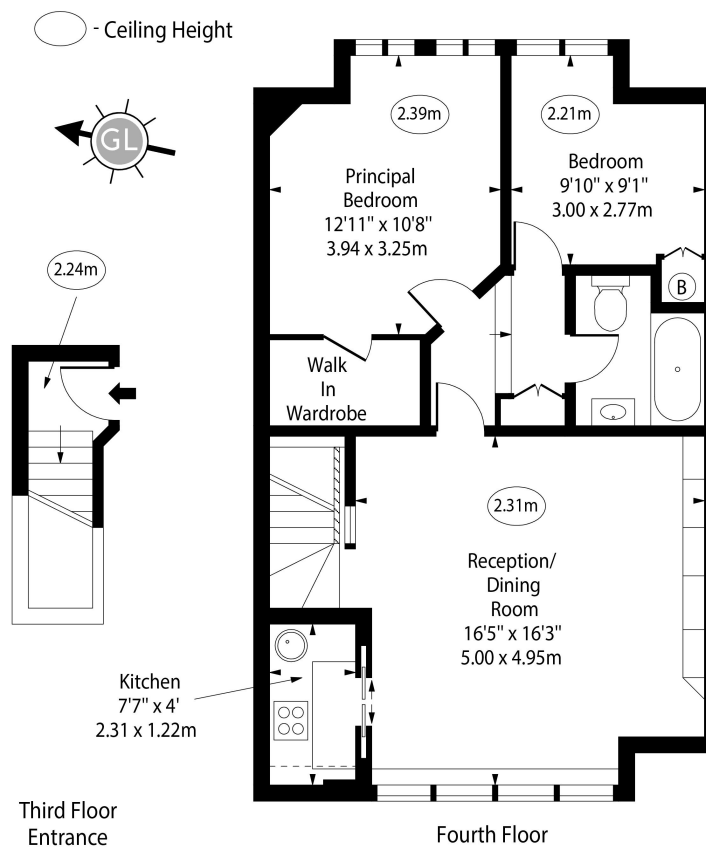
- 2 Bedrooms
- 1 Bathroom
- 1 reception room
- Communal gardens
- EPC - G
- Leasehold expires 10/08/2173
- Service charge £2,300
- 685 Sqft



Floorplan

685 sq ft | 64 sq m

Ennismore Gardens, SW7



Approx Gross Internal Area 685 Sq Ft - 63.64 Sq M

For Illustration Purposes Only - Not To Scale
www.goldens.co.uk
Ref. No. 020643M

Knightsbridge
174 Brompton Road,
London SW3 1HP
+4420 7306 1600
SalesKnightsbridge@jll.com

Urban living, your way.

jll.co.uk/residential

© 2019 Jones Lang LaSalle IP, Inc. All rights reserved. All information contained herein is from sources deemed reliable; however, no representation or warranty is made to the accuracy thereof.

