



## Queens Gate, London SW7

Price £850 per week - Unfurnished







## Description

A spacious and well presented raised ground floor flat in this portered building in the heart of South Kensington. The property consists of one double bedroom, one bathroom, a large reception room and a fully fitted kitchen. The flat is situated at the very top of Queen's Gate and therefore convenient for Kensington Gardens, Hyde Park, The Royal Albert Hall, Kensington High Street, The Natural History Museum and The Science Museum. The flat also benefits from communal heating and hot water which is inclusive in the rent.

Rent is payable on a monthly basis and you may be required to pay more than a month's rent in advance, depending on your circumstances. You will be required to pay a 1 week holding deposit following a successful offer. Utility bills, council tax, telephone line and broadband are not included in the rent. As well as paying the rent, you may also be required to make some additional permitted payments. If your tenancy does not qualify as an AST, additional fees may apply. Please visit [jll.co.uk/fees](http://jll.co.uk/fees) for details of fees which may be payable when renting a property.

- 1 Double bedroom
- 1 Bathroom
- Reception room
- Fully fitted kitchen
- Raised ground floor
- Heating & hot water included in rent
- Resident caretaker
- Approx. 826 sq ft (76.74 sq m)
- Unfurnished
- EPC: E

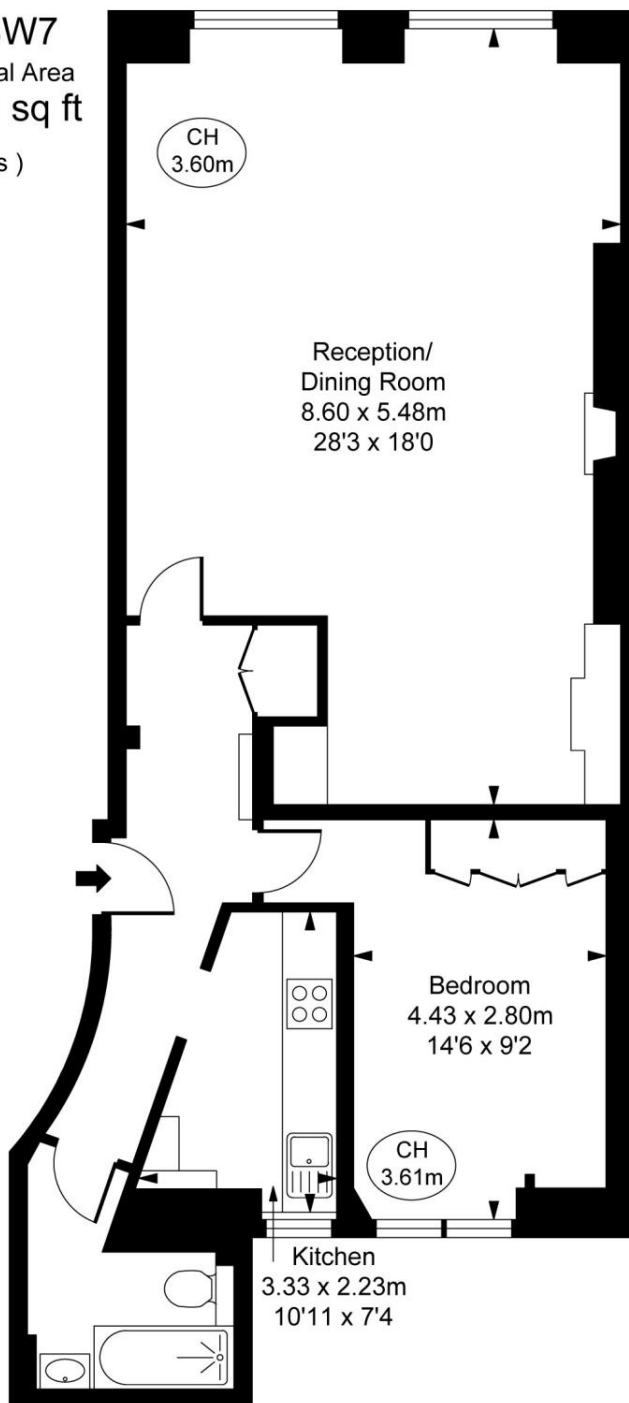
# Floorplan

826 sq ft | 77 sq m

## Queen's Gate, SW7

Approximate Gross Internal Area  
76.74 sq m / 826 sq ft

( CH = Ceiling Heights )



This plan is not to scale. It is for guidance and not for valuation purposes.  
All measurements and areas are approximate only, and have been prepared in accordance with the current edition of the RICS Code of Measuring Practice.  
© Fulham Performance

Knightsbridge  
174 Brompton Road,  
London SW3 1HP  
+4420 7306 1600  
SalesKnightsbridge@jll.com

*Urban living, your way.*

[jll.co.uk/residential](http://jll.co.uk/residential)

© 2019 Jones Lang LaSalle IP, Inc. All rights reserved. All information contained herein is from sources deemed reliable; however, no representation or warranty is made to the accuracy thereof.

