



## Kensington Road, London W8

Price £4,000 per week - Furnished







## Description

A stunning five bedroom period-style apartment in the heart of Kensington, well located within a short walk to surrounding Tube and Overground stations.

The apartment boasts three large bedrooms with two smaller bedrooms, is situated on the third floor and accompanied by six elegant bathrooms with a spacious reception room and a separate dining room.

Each bedroom is thoughtfully equipped with its own en suite bathroom, while two additional family bathrooms provide convenience for residents and guests alike. The apartment further benefits from a dressing room conveniently linked to one of the bedrooms.

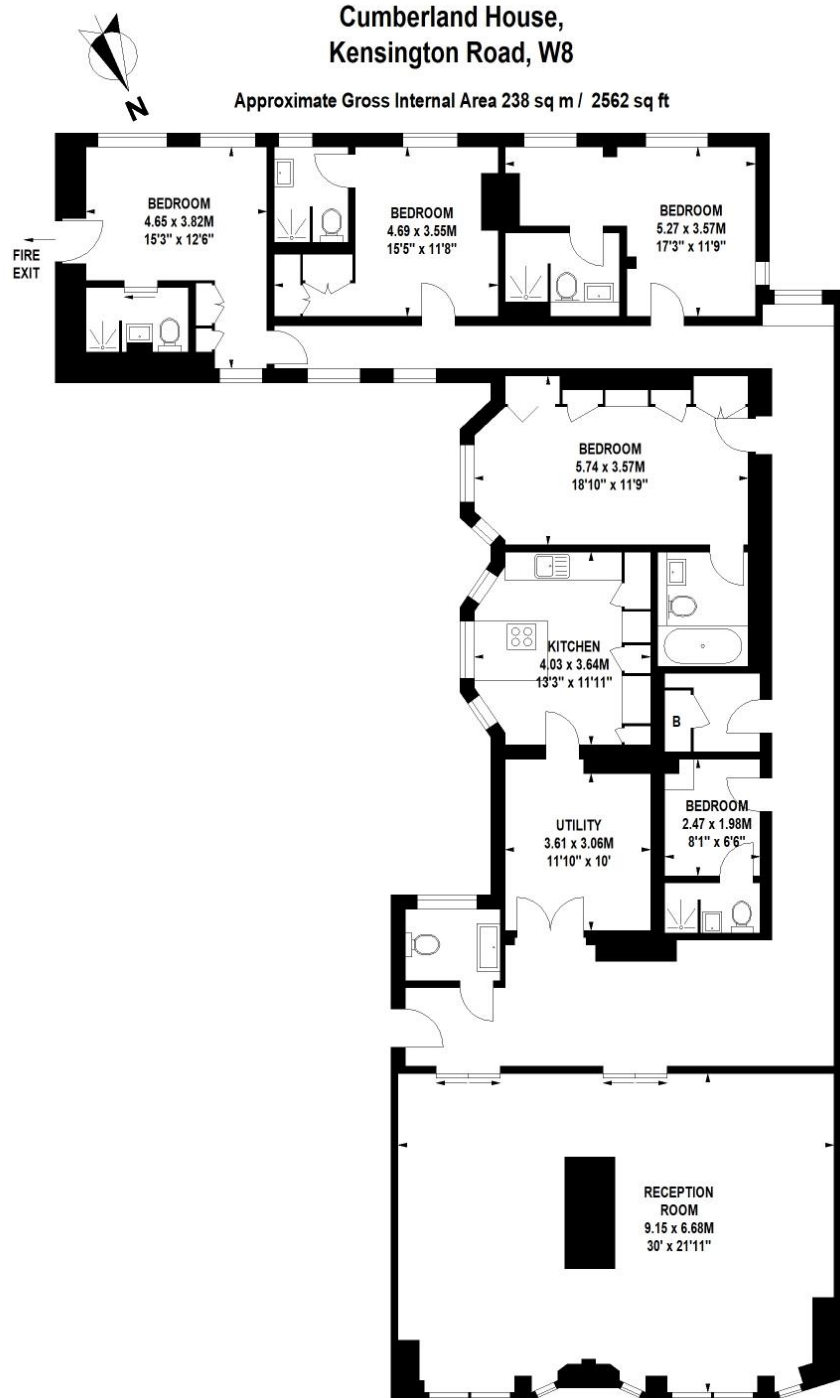
The apartment further benefits from a bright and fitted kitchen with ample storage space. The reception room and dining room both display stunning chandeliers, and a large 16-person dining table. The apartment is well presented with unique furniture and window dressings throughout.

Rent is payable on a monthly basis and you may be required to pay more than a month's rent in advance, depending on your circumstances. You will be required to pay a 1 week holding de

- Five bedrooms
- Six bathrooms (five en suite)
- One reception room
- Separate dining room
- Dressing room
- Ground floor
- Approx. 2562 sq ft (238 sq m)
- Council Tax: awaiting council tax valuation
- EPC: TBC
- Deposit: £24,000

# Floorplan

2,562 sq ft | 238 sq m



Ground Floor

Floor Plan produced for JLL by Mays Floorplans ©. Tel 020 3397 4594  
Illustration for identification purposes only, not to scale  
All measurements are maximum, and include wardrobes and window bays where applicable

Knightsbridge  
174 Brompton Road,  
London SW3 1HP  
+4420 7306 1600  
SalesKnightsbridge@jll.com

*Urban living, your way.*

[jll.co.uk/residential](http://jll.co.uk/residential)

© 2019 Jones Lang LaSalle IP, Inc. All rights reserved. All information contained herein is from sources deemed reliable; however, no representation or warranty is made to the accuracy thereof.

