



39 BELGRAVIA COURT  
33 EBURY STREET  
BELGRAVIA SW1W 0NY

A very comfortable two double bedroom flat situated on the first floor of this well-known, secure and modern block of flats and has the added benefit of an integral car parking space within the complex. Belgravia Court is located at the end of Ebury Street near to Victoria, the station and the underground.

**Accommodation**

- Two double bedrooms
- Bathroom
- Cloakroom
- Kitchen
- Drawing room
- Car parking space
- Independent heating and hot water
- Lift
- 24hr Gated security

**Guide Price** £950,000

**Tenure** Leasehold, 130 years, expires 14 June 2154

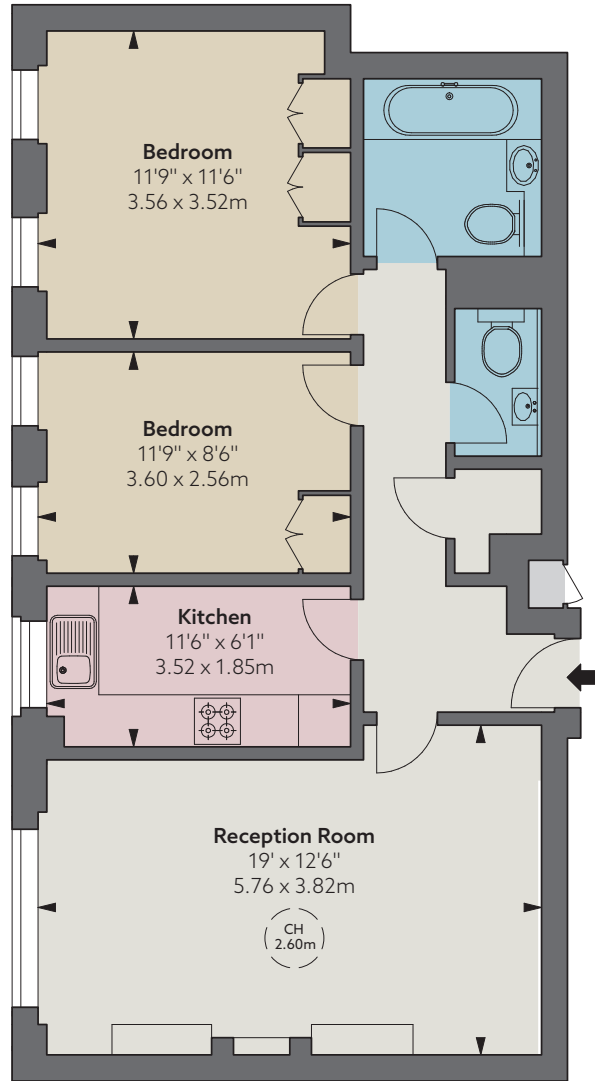
**Ground Rent** Peppercorn

**Service Charge** currently £7,908 for year ending March 2025 and £506.64 for the parking space

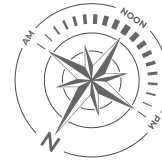
**Local Authority** Westminster

**Council Tax** Band G

**EPC Rating** D



**Approximate Gross Internal Area**  
712 sq ft  
66.14 sq m



© Alex Winship Photography Ltd.

**First Floor**



THE BIRCHHURST ALEX WINSHIP

Floorplan for guidance only, not to scale or valuations purposes. It must not be relied upon as a statement of fact. All measurements and areas are approximate and have been prepared in accordance with the current edition of the RICS Code of Measuring Practice.

These particulars are for general information only and do not constitute any part of an offer or contract. All statements contained therein are made without responsibility on the part of the vendors or lessors and are not to be relied upon as statement or representation of fact. Intending purchasers or lessees must satisfy themselves, by inspection, or otherwise, as to the correctness of each of the statements or dimensions contained in these particulars. This floorplan is for guidance only and not for valuation purposes. 24/09/24 JLL240920-02-GG

**JLL Knightsbridge**

174 Brompton Road, London SW3 1HP  
020 7306 1610

**JLL Chelsea**

2 Cale Street, London SW3 3QU  
020 7399 5010

[jll.co.uk/primecollection](http://jll.co.uk/primecollection)

