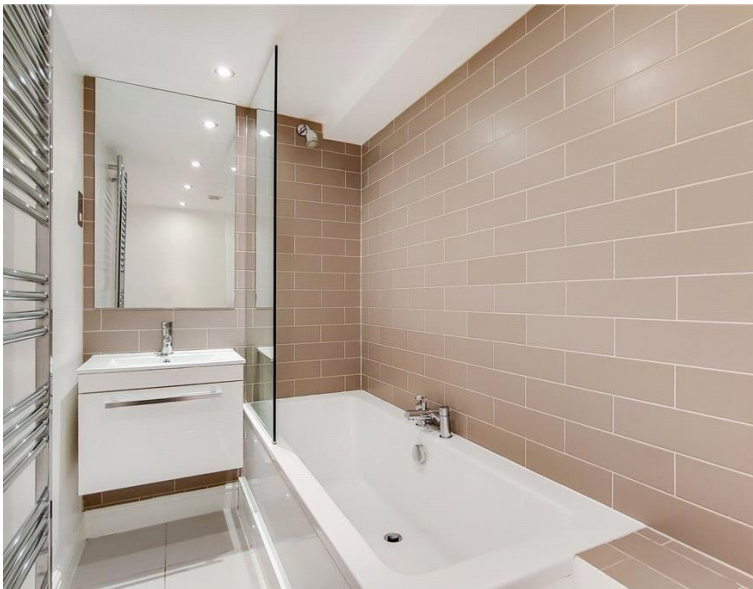
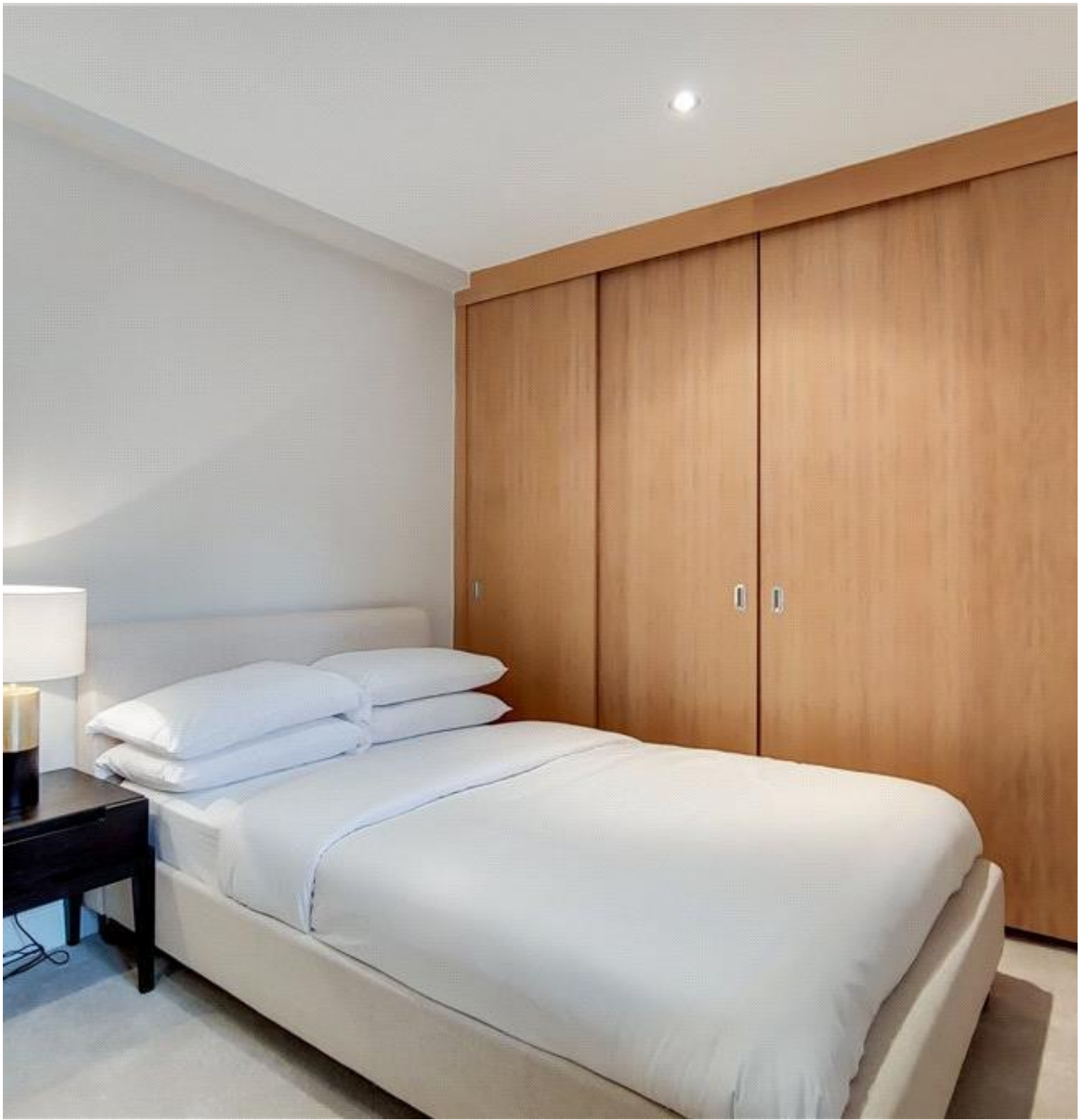




Barkston Gardens, London SW5

Price £900 per week - Furnished







Description

A stunning second floor flat (with lift) situated in this popular mansion block located on an attractive garden square. The property consists of master bedroom with en suite bathroom, second double bedroom, shower room, reception room and a fully fitted, eat-in kitchen. Further benefits include a balcony and portage. Barkston Gardens is a charming and tranquil square on the favoured South Kensington side of Earl's Court Road and so it is conveniently located for the many shops, restaurants and transport links which the area has to offer.

Rent is payable on a monthly basis and you may be required to pay more than a month's rent in advance, depending on your circumstances. You will be required to pay a 1 week holding deposit following a successful offer. Utility bills, council tax, telephone line and broadband are not included in the rent. As well as paying the rent, you may also be required to make some additional permitted payments. If your tenancy does not qualify as an AST, additional fees may apply. Please visit jll.co.uk/fees for details of fees which may be payable when renting a property.

- 2 Double bedrooms
- 1 Bathroom (en suite)
- 1 Shower room
- Reception room
- Eat-in kitchen
- Second floor
- Balcony
- Lift
- Porter
- Approx. 967 sq ft (89 sq m)

Floorplan

967 sq ft | 90 sq m

Roberts Court, Barkston Gardens, SW5

Approximate Gross Internal Area
89.9 sq m / 967 sq ft

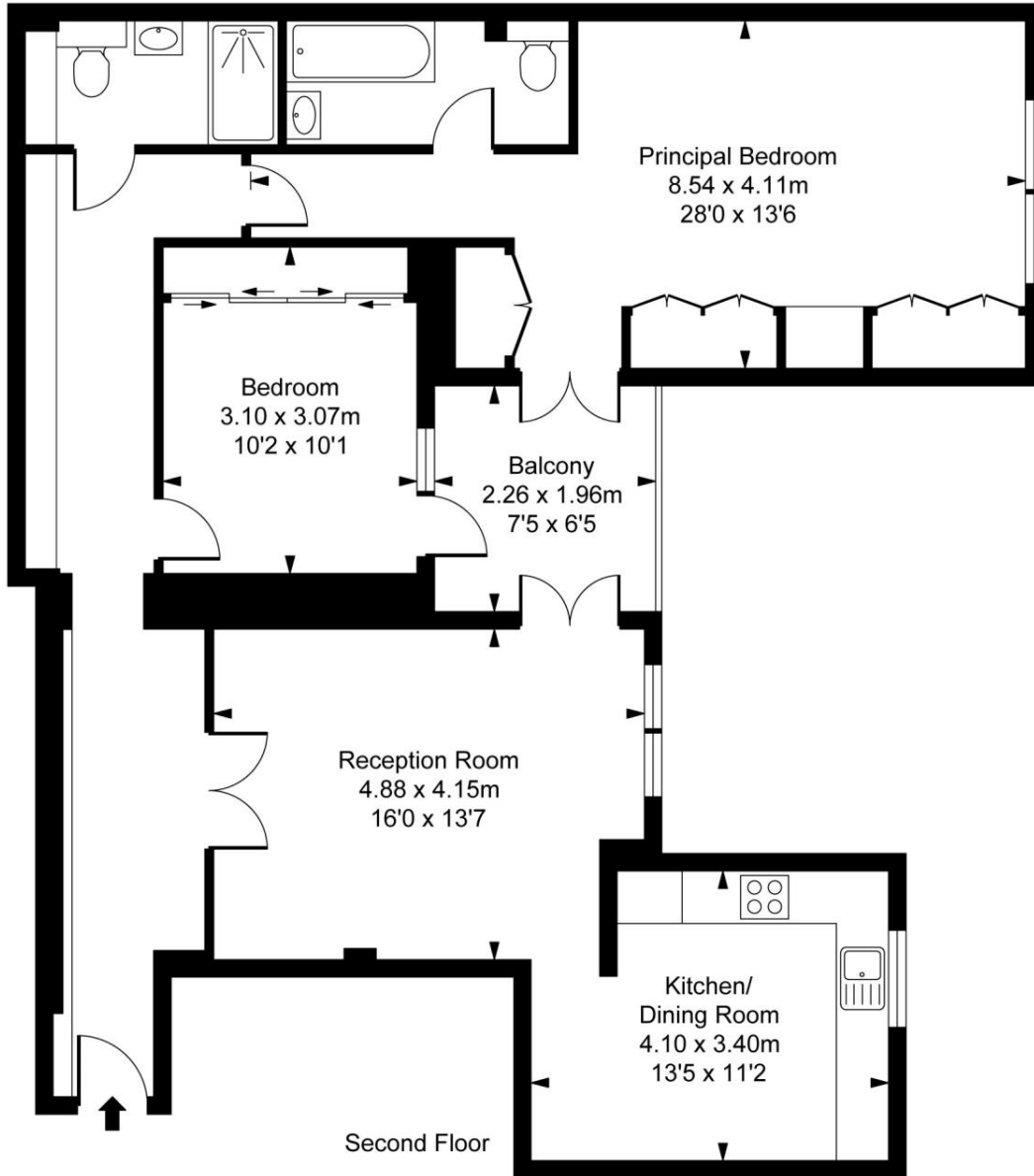


ILLUSTRATION FOR IDENTIFICATION PURPOSES ONLY
ALL MEASUREMENTS AND AREA FIGURES SUPPLIED BY OTHERS, ACCURACY IS NOT GUARANTEED.
THIS PLAN MUST NOT BE REPRODUCED BY ANY OTHER PERSON WITHOUT PERMISSION

Knightsbridge
174 Brompton Road,
London SW3 1HP
+4420 7306 1600
SalesKnightsbridge@jll.com

Urban living, your way.

jll.co.uk/residential

© 2019 Jones Lang LaSalle IP, Inc. All rights reserved. All information contained herein is from sources deemed reliable; however, no representation or warranty is made to the accuracy thereof.

