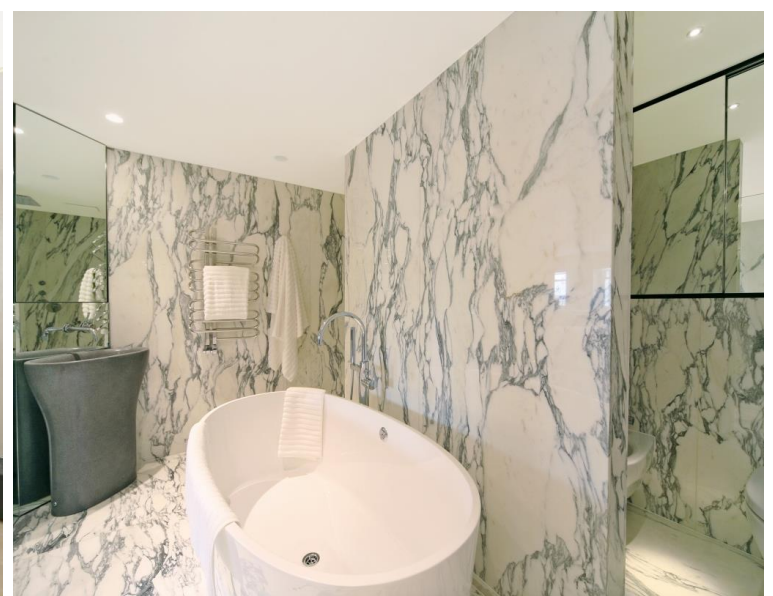
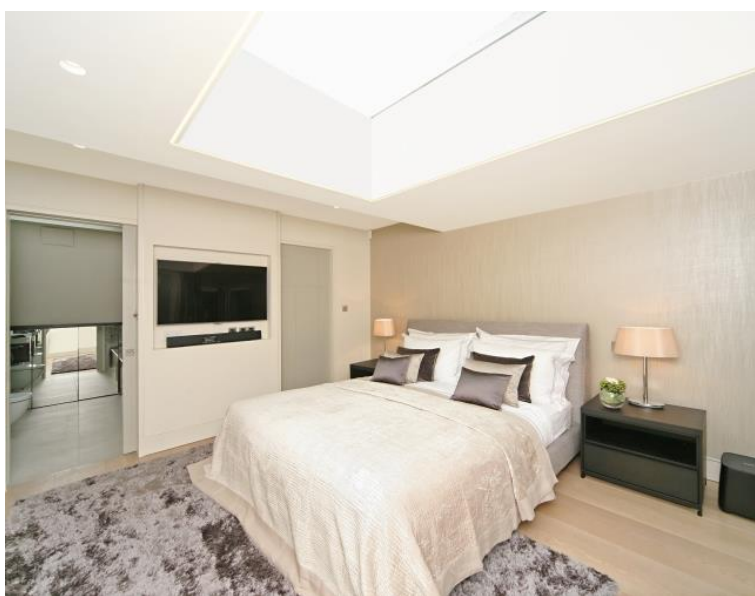




Princes Gate, London SW7

Price £6,500 per week - Furnished







Description

A truly spectacular penthouse apartment (with direct lift access) in this newly renovated building in Princes Gate. The property comprises master bedroom with en suite bathroom and walk-in wardrobe, second double bedroom with en suite bathroom, two further double bedrooms with en suite shower rooms, guest cloakroom, two reception rooms and a fully fitted, eat-in kitchen. The apartment has been refurbished and interior designed to the highest of standards and further benefits from excellent storage, air conditioning, an integrated sound system, a caretaker and a roof terrace offering amazing views over Princes Gardens.

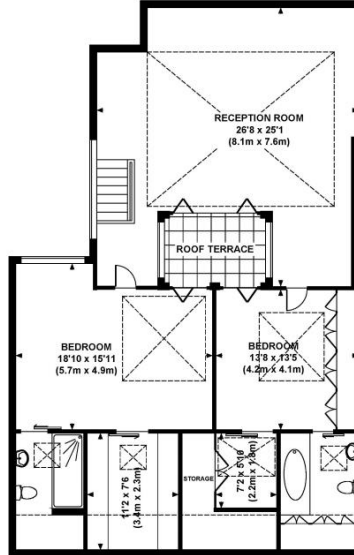
Rent is payable on a monthly basis and you may be required to pay more than a month's rent in advance, depending on your circumstances. You will be required to pay a 1 week holding deposit following a successful offer. Utility bills, council tax, telephone line and broadband are not included in the rent. As well as paying the rent, you may also be required to make some additional permitted payments. If your tenancy does not qualify as an AST, additional fees may apply. Please visit jll.co.uk/fees for details of fees which may be payable when renting a property.

- 4 Double bedrooms
- 2 Bathrooms (en suite)
- 2 Shower rooms (en suite)
- Guest cloakroom
- 2 Reception rooms
- Eat-in kitchen
- Third & fourth floor
- Direct lift access
- Roof terrace
- Caretaker

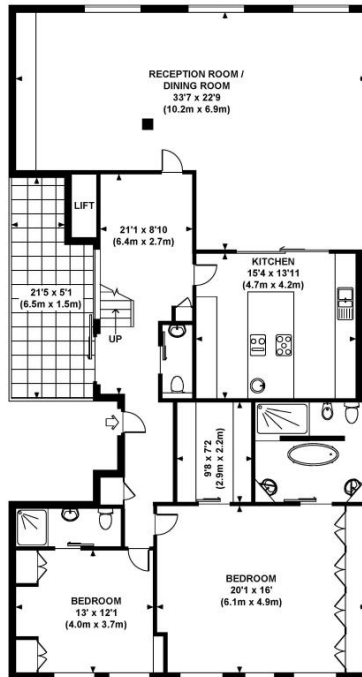
Floorplan

3,300 sq ft | 307 sq m

Approx. gross internal area
3167 Sq.Ft. / 294.2 Sq.M.
3300 Sq.Ft. / 306.6 Sq.M. Inc. Restricted Height Area & Storage



FOURTH FLOOR



THIRD FLOOR



All measurements are approximate and for illustration purposes only as defined by theRICS Code of Measuring Practice © 2013
Dowling Jones Design www.dowlingjones.com 020 7610 9933

Knightsbridge
174 Brompton Road,
London SW3 1HP
+4420 7306 1600
SalesKnightsbridge@jll.com

Urban living, your way.

jll.co.uk/residential

© 2019 Jones Lang LaSalle IP, Inc. All rights reserved. All information contained herein is from sources deemed reliable; however, no representation or warranty is made to the accuracy thereof.

