



**Grosvenor Road, London SW1V**  
Price £1,350 per week - Furnished









## Description

A bright and spacious three-bedroom apartment in this highly sought after secure development by the River Thames.

The apartment is situated on 13th floor and benefits from stunning views over London as well as wooden floors throughout, ample storage and an air-cooling system.

The Panoramic also has a residents' gym and underground parking (by separate negotiation) as well as a concierge service and 24 hour portage.

We understand that cooling / heating is delivered via a communal system for which separate charges apply.

Rent is payable on a monthly basis and you may be required to pay more than a month's rent in advance, depending on your circumstances. You will be required to pay a 1 week holding deposit following a successful offer. Utility bills, council tax, telephone line and broadband are not included in the rent. As well as paying the rent, you may also be required to make some additional permitted payments. If your tenancy does not qualify as an AST, additional fees may apply. Please visit [jll.co.uk/fees](http://jll.co.uk/fees) for details of fees which may be payable when renting a property.

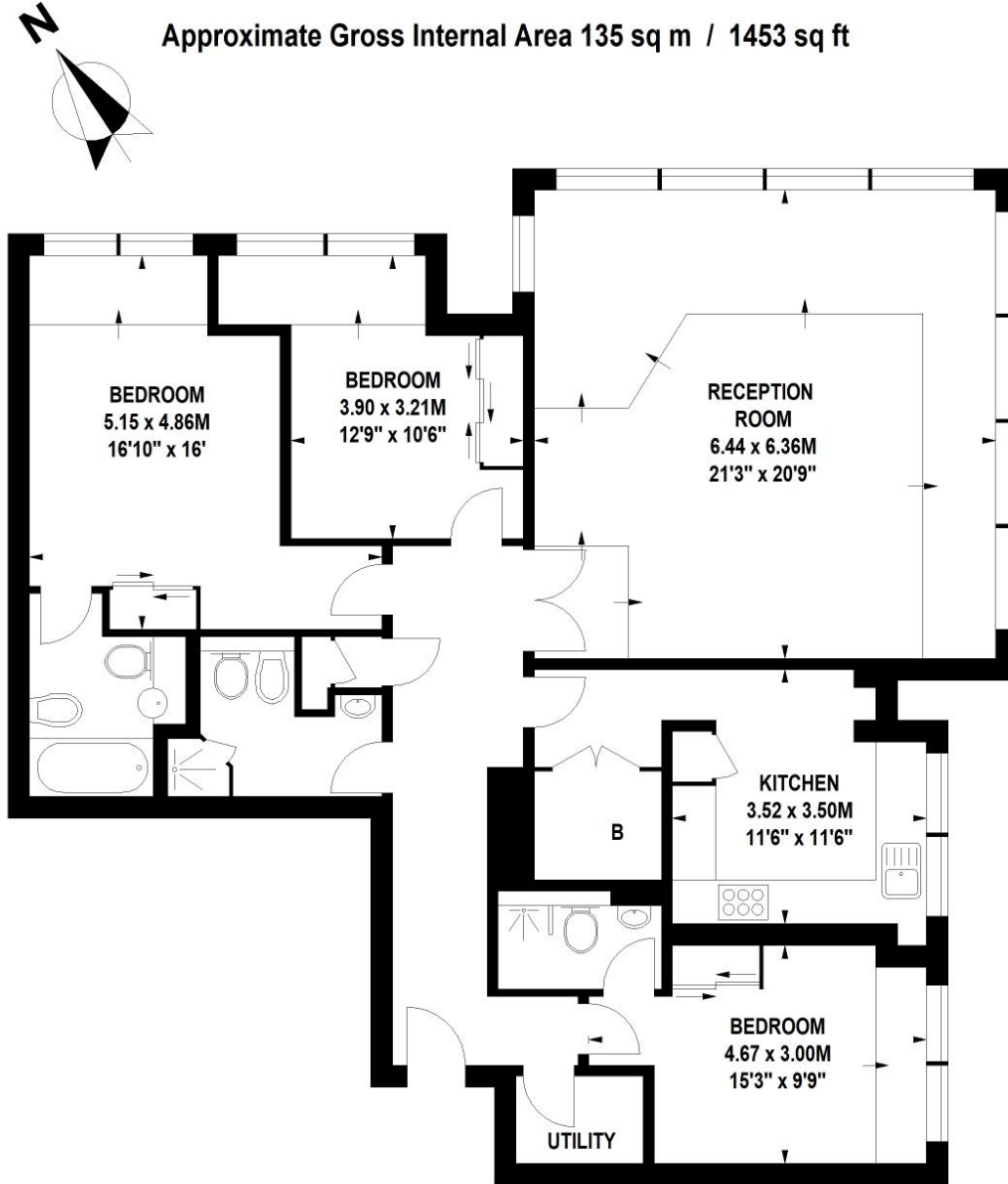
- Three bedrooms
- Three bathrooms (two en suite)
- Large reception room
- Residents' gym
- Underground parking by separate negotiation
- Concierge
- 24 hour porter
- Air cooling
- EPC: To be determined
- Council Tax: Band H

# Floorplan

1,453 sq ft | 135 sq m

## The Panoramic, Grosvenor Road, SW1

Approximate Gross Internal Area 135 sq m / 1453 sq ft



### Twelfth Floor

Floor Plan produced for JLL by Mays Floorplans © . Tel 020 3397 4594

Illustration for identification purposes only, not to scale

All measurements are maximum, and include wardrobes and window bays where applicable

Knightsbridge  
174 Brompton Road,  
London SW3 1HP  
+4420 7306 1600  
SalesKnightsbridge@jll.com

*Urban living, your way.*

[jll.co.uk/residential](http://jll.co.uk/residential)

© 2019 Jones Lang LaSalle IP, Inc. All rights reserved. All information contained herein is from sources deemed reliable; however, no representation or warranty is made to the accuracy thereof.

