



Picton Place, London W1U

Price £885 per week - Furnished







Description

The property comprises a bright and spacious reception room with two balconies and a fully fitted, open plan kitchen, a double bedroom with direct access to a balcony and a separate shower room. The property has modern furniture throughout and wooden flooring in the reception and kitchen.

Picton Place is a popular development with a concierge service located in central Marylebone. Ideally located just a short walk from Marylebone High Street as well neighbouring areas of Mayfair and Soho as well as transport links from Bond Street and Oxford Circus.

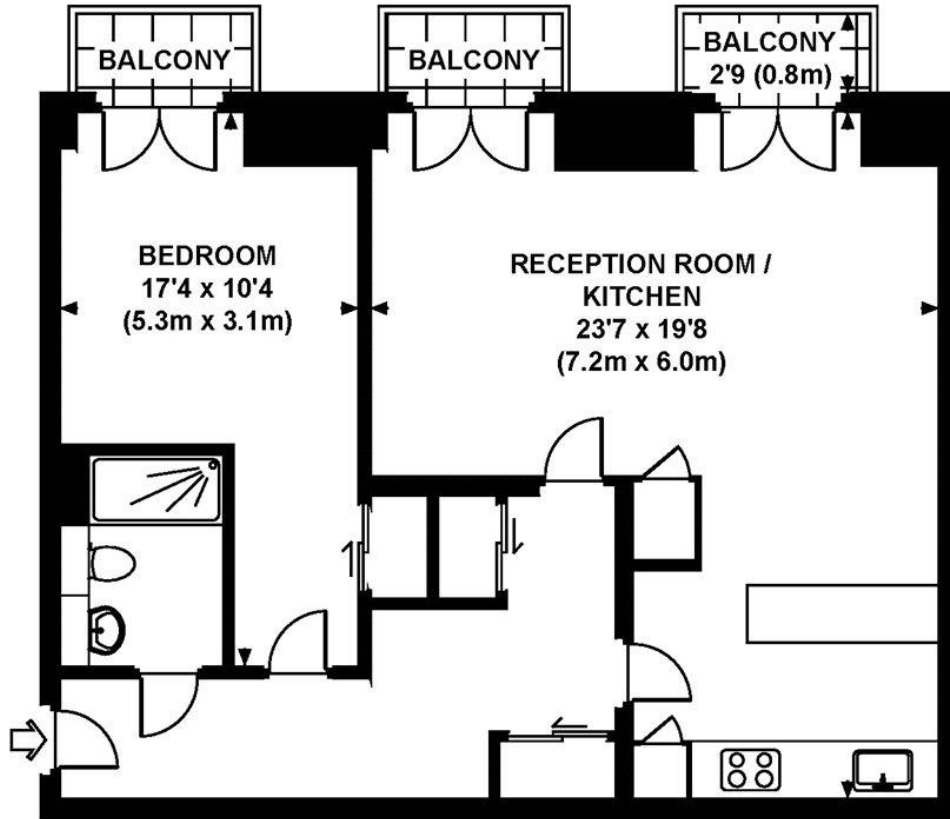
Rent is payable on a monthly basis and you may be required to pay more than a month's rent in advance, depending on your circumstances. You will be required to pay a 1 week holding deposit following a successful offer. Utility bills, council tax, telephone line and broadband are not included in the rent. As well as paying the rent, you may also be required to make some additional permitted payments. If your tenancy does not qualify as an AST, additional fees may apply. Please visit jll.co.uk/fees for details of fees which may be payable when renting a property.

- Modern Apartment
- Open-Plan Kitchen
- Concierge
- Bright and Spacious
- Wooden Flooring
- Furnished
- Central Marylebone
- Close to Hyde Park
- Approx. 772 sq ft (67.1 sq m)
- EPC: C

Floorplan

772 sq ft | 72 sq m

Approx. gross internal area
722 Sq.Ft. / 67.1 Sq.M.



THIRD FLOOR



All measurements are approximate and for illustration purposes only as defined by the RICS Code of Measuring Practice © 2013
Dowling Jones Design www.dowlingjones.com 020 7610 9933

Knightsbridge
174 Brompton Road,
London SW3 1HP
+4420 7306 1600
SalesKnightsbridge@jll.com

Urban living, your way.

jll.co.uk/residential

© 2019 Jones Lang LaSalle IP, Inc. All rights reserved. All information contained herein is from sources deemed reliable; however, no representation or warranty is made to the accuracy thereof.

