



# Buckingham Gate, London SW1E

Price £1,600 per week - Furnished







## Description

A beautifully presented ninth floor apartment (with lift) which has been interior designed by TH2 Designs and offers spectacular south westerly views. Accommodation comprises master bedroom with en suite shower room, second double bedroom, guest bathroom, a fully fitted kitchen with seating area adjoining a stylishly decorated reception. Further benefits include wooden flooring and marble back drops with floor to ceiling glass windows providing natural light and city views.

Please note that due to building works in the area, the skyline views from the apartments may have changed from those shown in the marketing pictures.

Rent is payable on a monthly basis and you may be required to pay more than a month's rent in advance, depending on your circumstances. You will be required to pay a 1 week holding deposit following a successful offer. Utility bills, council tax, telephone line and broadband are not included in the rent. As well as paying the rent, you may also be required to make some additional permitted payments. If your tenancy does not qualify as an AST, additional fees may apply. Please visit [jll.co.uk/fees](http://jll.co.uk/fees) for details of fees which may be payable when renting a property.

- 2 Double bedrooms
- 1 Bathroom
- 1 Shower room (en suite)
- Reception room
- Open plan kitchen
- Ninth floor
- Lift
- 24 Hour concierge
- Approx. 1,050 sq ft (97 sq m)
- EPC: B

# Floorplan

1,050 sq ft | 98 sq m

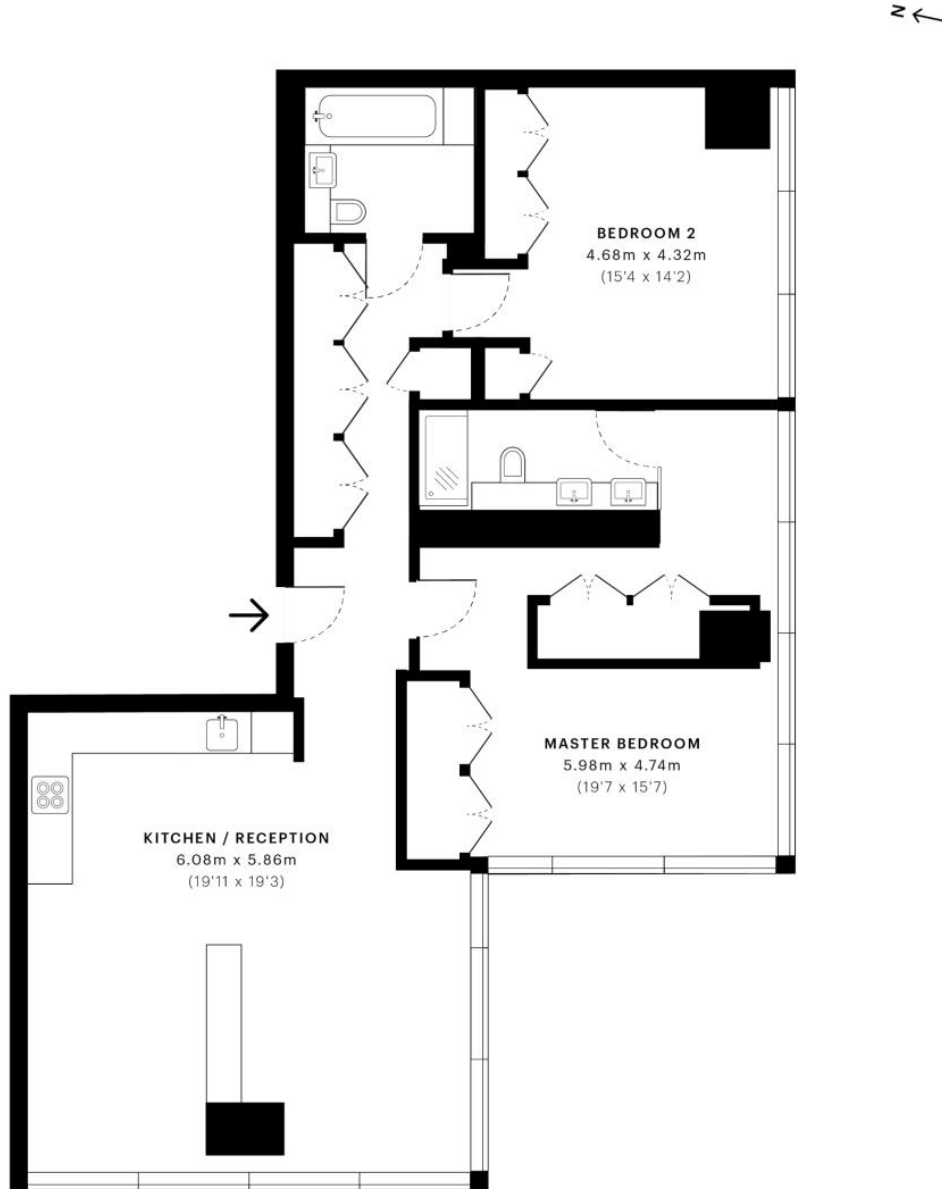


The Tower, SW1E

CAPTURE DATE  
04/02/2019

LASER SCAN POINTS  
32,448,108

GROSS INTERNAL AREA  
97.59 Sqm / 1050.46 Sqft



— Ninth Floor

Knightsbridge  
174 Brompton Road,  
London SW3 1HP  
+4420 7306 1600  
SalesKnightsbridge@jll.com

*Urban living, your way.*

[jll.co.uk/residential](http://jll.co.uk/residential)

© 2019 Jones Lang LaSalle IP, Inc. All rights reserved. All information contained herein is from sources deemed reliable; however, no representation or warranty is made to the accuracy thereof.

