

CARO POINT

GATLIFF ROAD SW1W



A WONDERFUL 2-BEDROOM APARTMENT WITH INCREDIBLE VIEWS TOWARDS THE LONDON EYE AND CENTRAL LONDON.



The superb apartment is presented in good order throughout. It has a fantastic balcony with enviable views of Central London. It has two double bedrooms (one en suite), a spacious open-plan kitchen/reception room, lots of practical storage, and a secure underground parking space.

Residents enjoy access to a 24-hour concierge service, a leisure suite with a well-equipped gym and spa facilities, shopping is available on site, additionally, there is a children's crèche, a Purple Dragon private kids club, a coffee shop, and a bakery.

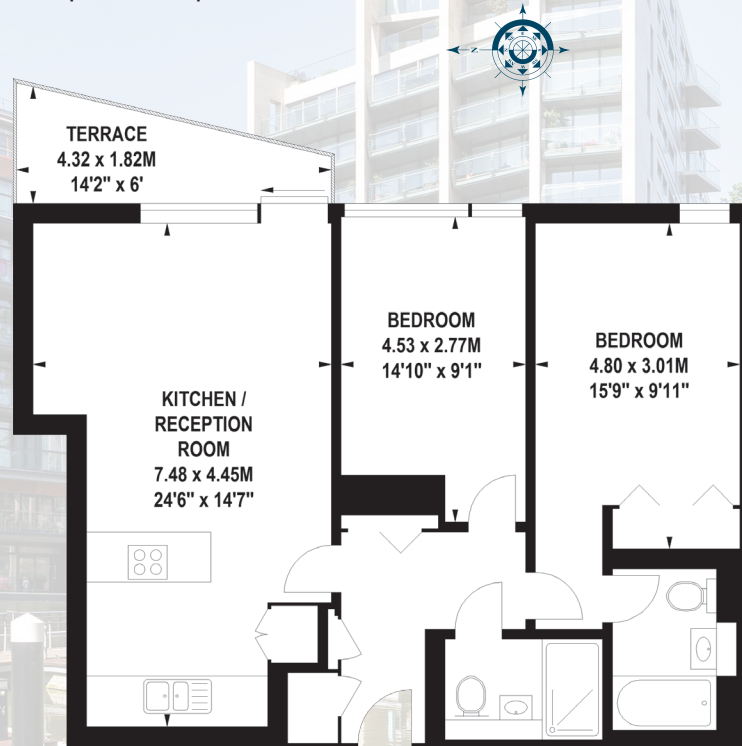
Sloane Square is close by, with renowned retail shopping, as is Victoria. Victoria Station has access to the tube and mainline transport links, providing easy access both in and out of the city, including the Gatwick Express. Battersea Park is located just over Albert Bridge and is within walking distance, it is a fabulous London Park in the heart of the city.

ACCOMMODATION

Balcony with far reaching views | 24 Hour Concierge | Secure Parking | Residents Gym & Spa | On-Site supermarket | Coffee Shop | Crèche & Purple Dragon Private Kids Club | Walking Distance to Sloane Square & Victoria Station

Gross Internal Area (Approx.)

77 sq m - 829 sq ft



Seventh Floor

TERMS

Guide price Offers over £895,000

Tenure Leasehold; 978 years remaining

Service charge £7,800.27 PA

Ground rent £1,558.86 PA

Local authority City of Westminster

EPC C

Council tax Band F

JLL Knightsbridge
174 Brompton Road,
London SW3 1HP
020 7306 1610



These particulars are for general information only and do not constitute any part of an offer or contract. All statements contained therein are made without responsibility on the part of the vendors or lessors and are not to be relied upon as statement or representation of fact. Intending purchasers or lessees must satisfy themselves, by inspection, or otherwise, as to the correctness of each of the statements or dimensions contained in these particulars.