



Resident
Residents
only
P
Mon - Fri
8.30 am - 10 pm
Sat
8.30 am - 5.30 pm

Mallord Street SW3



A charming and comfortable family house arranged over only three floors and in the same ownership for over thirty years. It is set back from the street and having a substantial south-facing garden at the rear.

Mallord Street is located just to the north of the King's Road and joins Old Church Street with The Vale. It has an artistic provenance being named after Joseph William Mallord Turner and having Augustus John and the author A.A. Milne as some of its famous past residents.





ACCOMMODATION

- Five bedrooms
- Bathroom
- En-suite shower room
- Cloakroom
- Dining room/study
- Drawing room
- Kitchen/ dining room
- Entrance hall
- Garden

Planning permission was granted 7/3/22 for internal alterations to the existing layout and the creation of a basement. Please refer to RBK&C's planning portal. Ref: PP/22/00/57.

TERMS

Guide Price:
£4,800,000

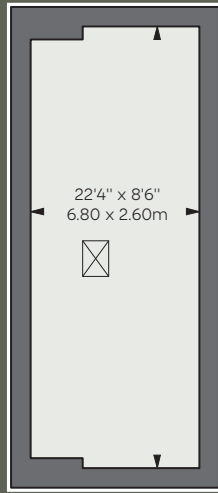
Tenure: Freehold

EPC: Rating D

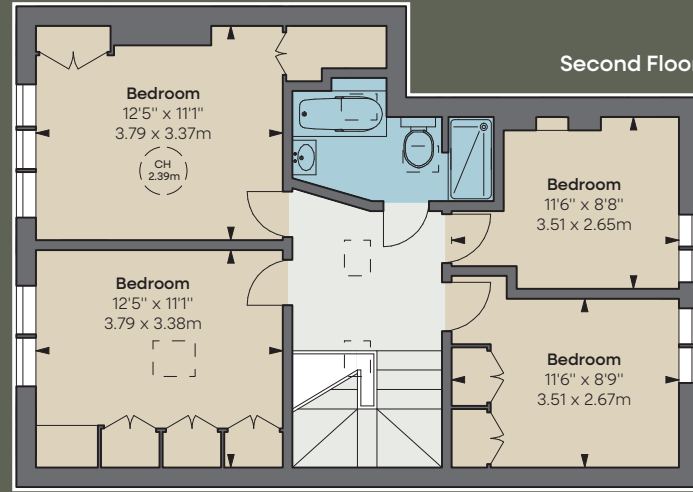
Local Authority:
The Royal Borough of
Kensington & Chelsea

Council Tax: Band H

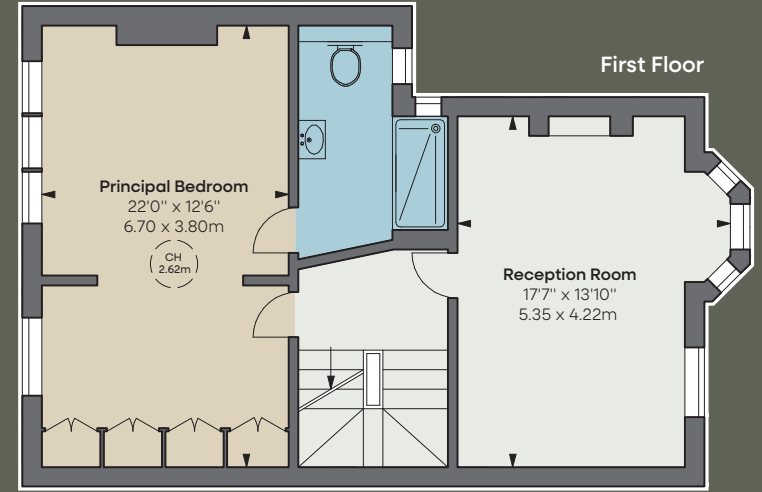




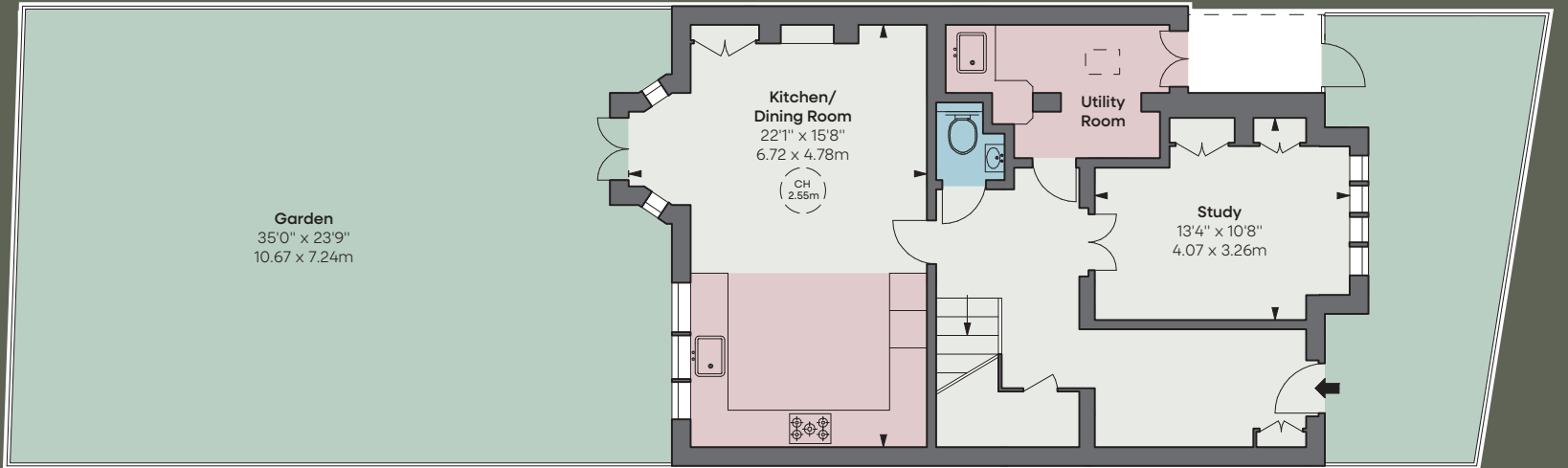
Loft



Second Floor



First Floor



Ground Floor

APPROXIMATE GROSS INTERNAL AREA
2,050 sq ft
190.45 sq m
excluding loft

APPROXIMATE GROSS LOFT AREA
190 sq ft
17.65 sq m

TOTAL APPROXIMATE GROSS INTERNAL AREA
2,240 sq ft
208.10 sq m

THE BROCHURE
ALEX
WINSHIP

These particulars are for general information only and do not constitute any part of an offer or contract. All statements contained therein are made without responsibility on the part of the vendors or lessors and are not to be relied upon as statement or representation of fact. Intending purchasers or lessees must satisfy themselves, by inspection, or otherwise, as to the correctness of each of the statements or dimensions contained in these particulars. This floorplan is for guidance only and not for valuation purposes. 01/05/24 JLL-240425-03-GG

Floorplan for guidance only, not to scale or valuations purposes. It must not be relied upon as a statement of fact. All measurements and areas are approximate and have been prepared in accordance with the current edition of the RICS Code of Measuring Practice.

JLL Knightsbridge

174 Brompton Road, London SW3 1HP
020 7306 1610

JLL Chelsea

2 Cale Street, London SW3 3QU
020 7399 5010

jll.co.uk/primecollection

