

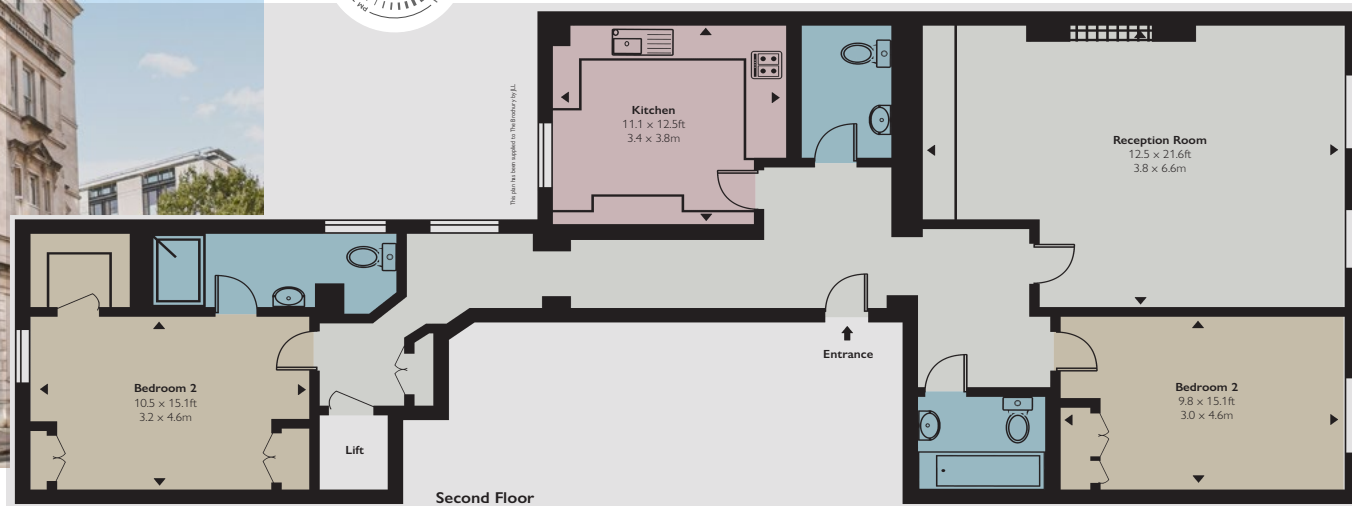
Ennismore Gardens

KNIGHTSBRIDGE SW7 1AA





Approximate Gross Internal Area
1,280 sq ft / 118.9 sq m



Located in the prestigious neighbourhood of Ennismore Gardens, this bright and spacious two-bedroom property offers a sophisticated and elegant living experience.

This stunning residence is situated on the second floor (with lift) of a classic Victorian-era building, exuding charm and character at every turn.

Outside, residents can enjoy the tranquillity of Ennismore Gardens, a beautifully landscaped communal garden accessible exclusively to residents.

The location is also within close proximity to Knightsbridge, offering an array of high-end shopping, dining, and entertainment options.

Perfectly blending contemporary comfort with classic charm, this property provides a refined and exquisite living experience in one of London's most coveted neighbourhoods.

THE BROCHURE

Accommodation

- Two bedrooms
- Two bathrooms
- Garden aspect
- Second floor with lift

Guide Price £2,299,950

Tenure Leasehold of approximately 93 years

Service Charge £4,839 per annum

Ground Rent Peppercorn

Local Authority City of Westminster

Council Tax Band G

EPC Rating C

These particulars are for general information only and do not constitute any part of an offer or contract. All statements contained therein are made without responsibility on the part of the vendors or lessors and are not to be relied upon as statement or representation of fact. Intending purchasers or lessees must satisfy themselves, by inspection, or otherwise, as to the correctness of each of the statements or dimensions contained in these particulars. This floorplan is for guidance only and not for valuation purposes. 02/04/25 JLL-231011B-05MS

JLL Knightsbridge

174 Brompton Road, London SW3 1HP
020 7306 1610

JLL Chelsea

2 Cale Street, London SW3 3QU
020 7399 5010

jll.co.uk/primecollection

