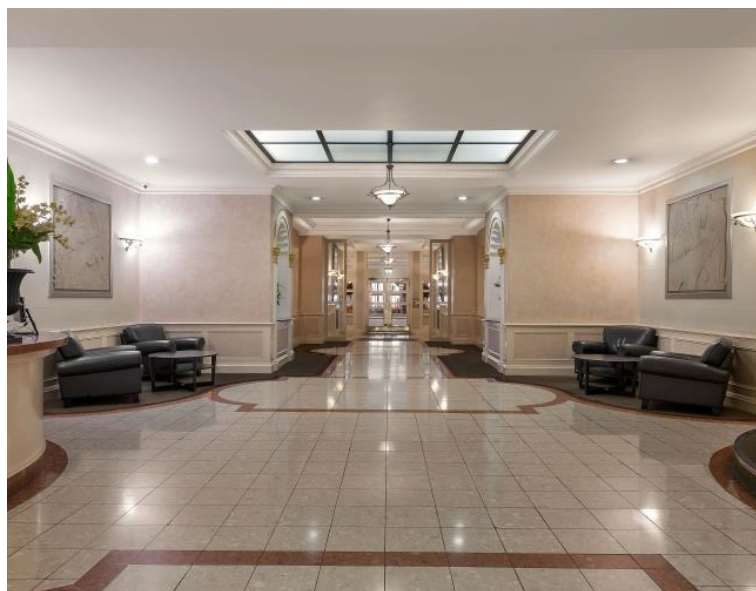




88 Brompton Road, London SW3

Guide price £1,150,000 Leasehold







Description

A fantastic two-bedroom flat situated on the 9th floor of this prestigious building directly across the famous Brompton Road from Harrods.

The property boasts a wrap-round kitchen with stone worktops, an expansive living area and two double bedrooms including a master ensuite.

The famous Princes Court features a lavish entrance hall with concierge for residents and lift access to all floors. Exiting the building brings you straight out to the famed frontage of Harrods and right into the heart of Knightsbridge.

The vibrant area is packed with shops, restaurants and much more with Hyde Park around the corner and multiple transport options including Knightsbridge Underground Station just 2 minutes walk away.

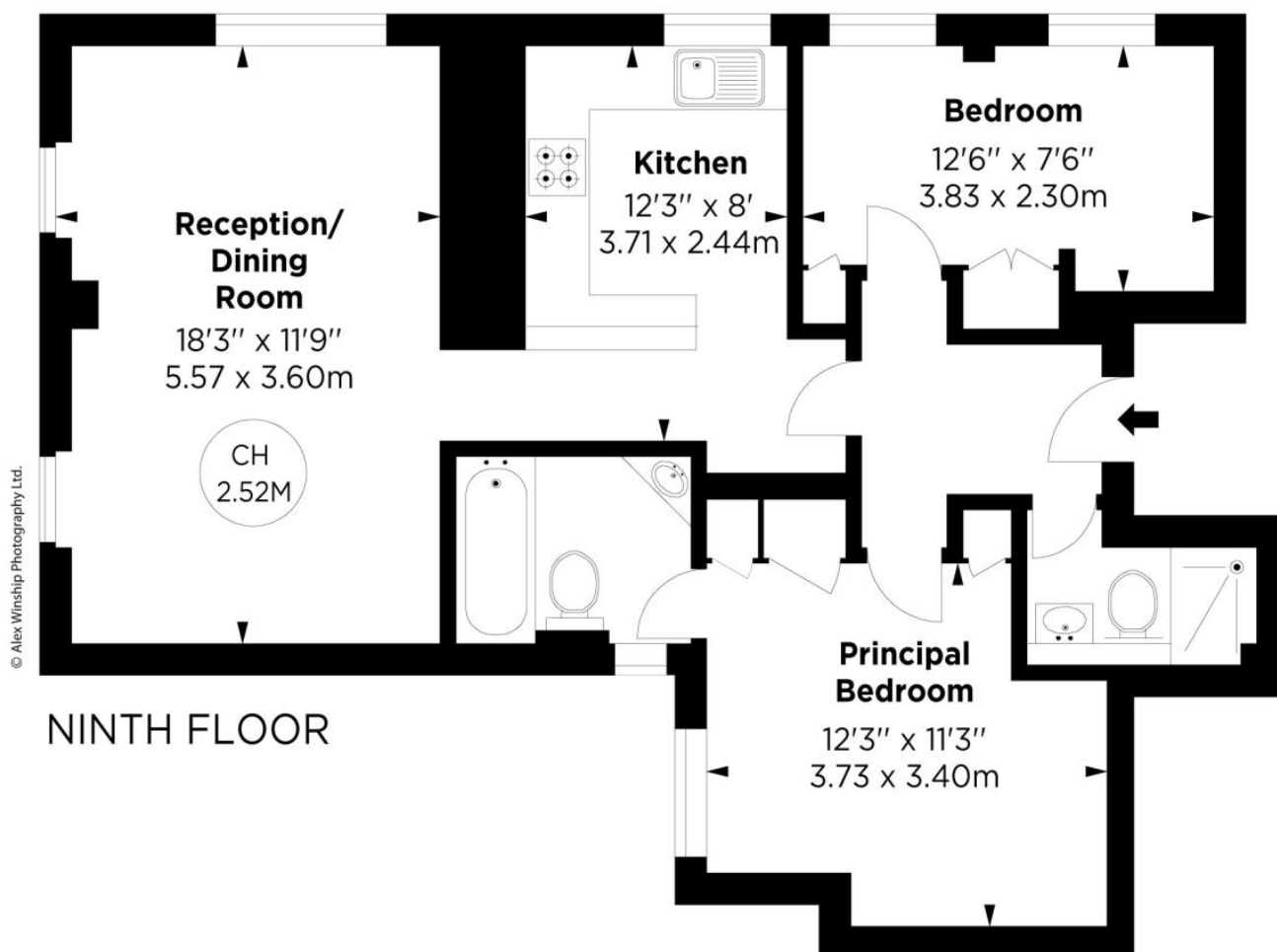
- Leasehold; approx 164 years
- Master bedroom with en suite bathroom
- Further second bedroom
- Reception/dining room
- Fully fitted kitchen
- Shower room
- Concierge
- Lift
- Ninth floor
- Approx. 727 sq ft (67 sq m)

Princes Court, SW3

APPROX. GROSS INTERNAL AREA *
727 Sq Ft - 67.54 Sq M

This floorplan is for GUIDANCE ONLY and NOT FOR VALUATION purposes.

Key :
CH - Ceiling Height



**ALEX
WINSHIP**
Photography

* Floorplan for guidance only, not to scale or valuations purposes. It must not be relied upon as a statement of fact. All measurements and areas are approximate and have been prepared in accordance with the current edition of the RICS Code of Measuring Practice.

