



## Lowndes Square, London SW1X

Price £2,995 per week - Unfurnished









# Description

A luxurious 3-bedroom apartment situated on the third floor of a popular Knightsbridge garden square building. This beautifully designed apartment offers an exceptional living experience with its impressive features and prime location.

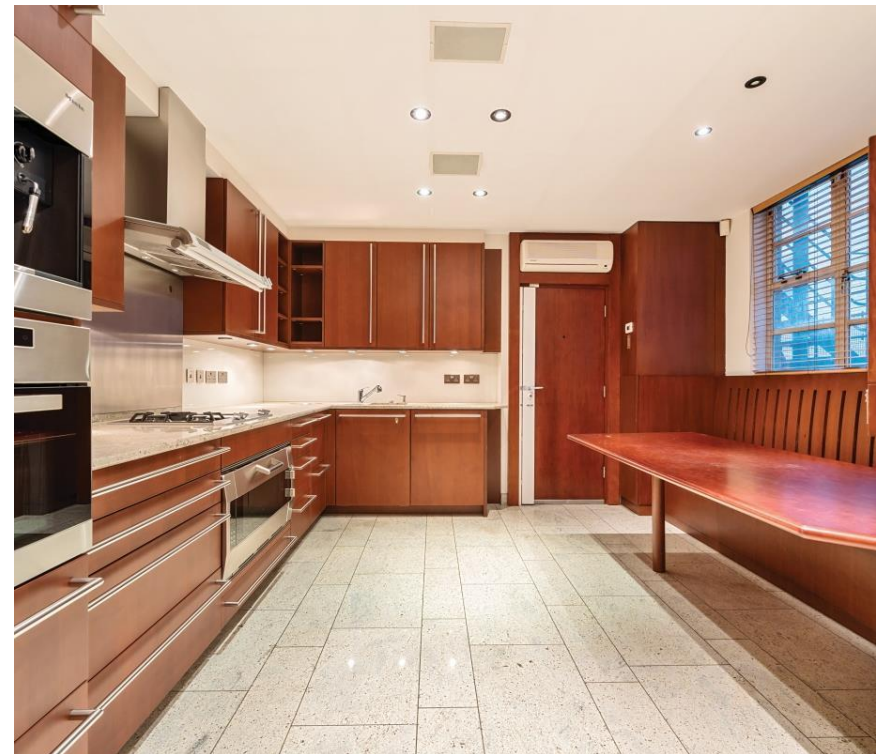
The property comprises a master bedroom with a walk-in wardrobe and en suite bathroom, two further bedrooms with an en suite bathroom, entrance hall, large reception room perfect for hosting gatherings or enjoying quality time with family and friends, high-end kitchen, media room, parquet flooring throughout which adds a touch of elegance and warmth to the interiors, creating a sophisticated atmosphere throughout.

Other notable features of this apartment include a lift for easy access to the 3rd floor and a dedicated porter to assist with any needs or concerns. The building is well-maintained and secure, offering peace of mind to residents.

One of the highlights of this apartment is its prime location within the prestigious garden square. Residents will enjoy the tranquillity and beauty of this green space, providing a refreshing escape from the bustling city. Lowndes Square is located just between Sloane Street and Belgravia and is walking distance to many popular retail shops including Harrods and Harvey Nichols.

Rent is payable on a monthly basis and you may be required to pay more than a month's rent in advance, depending on your circumstances. You will be required to pay a 1 week holding deposit following a successful offer. Utility bills, council tax, telephone line and broadband are not included in the rent. As well as paying the rent, you may also be required to make some additional permitted payments. If your tenancy does not qualify as an AST, additional fees may apply. Please visit [jll.co.uk/fees](http://jll.co.uk/fees) for details of fees which may be payable when renting a property.

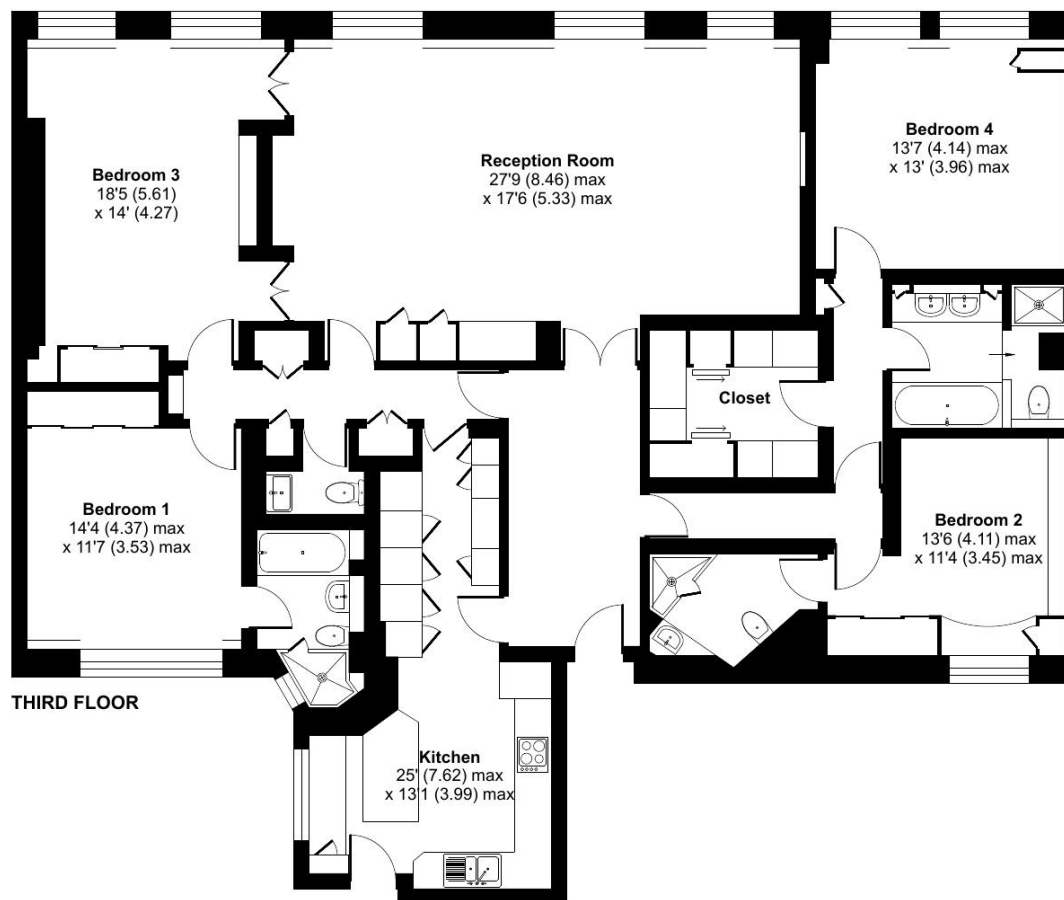
- Master bedroom with a walk-in bedroom and en suite bathroom
- Further two bedrooms each with en suite bathroom
- Large reception room
- Media room
- Porter
- Lift
- Unfurnished
- Approx. 2,050 sq ft / 190 sq m
- EPC: C
- Council tax: Band H



## Lowndes Square, London, SW1X

Approximate Internal Area = 2050 sq ft / 190.4 sq m

For identification only - Not to scale



Floor plan produced in accordance with RICS Property Measurement Standards incorporating International Property Measurement Standards (IPMS2 Residential). © nchecon 2024. Produced for JLL Residential. REF: 1092701

Knightsbridge  
Wood Wharf,  
London E14 5GX  
+4420 7306 1600  
lettingsknightsbridge@eu.jll.co

*Urban living, your way.*

[jll.co.uk/residential](http://jll.co.uk/residential)

© 2019 Jones Lang LaSalle IP, Inc. All rights reserved. All information contained herein is from sources deemed reliable; however, no representation or warranty is made to the accuracy thereof.

