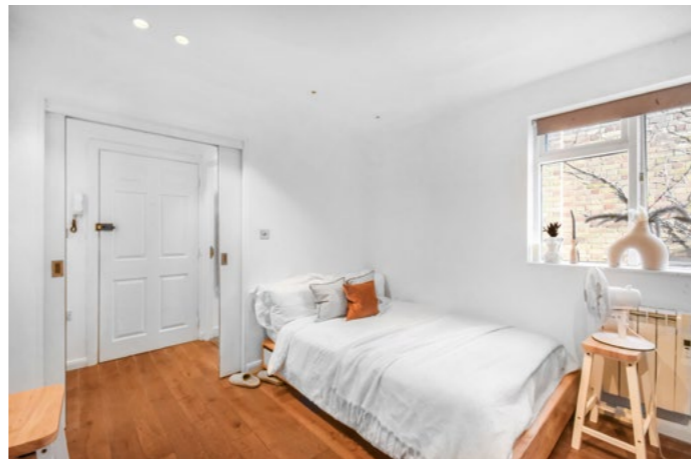


Beaufort Gardens

KNIGHTSBRIDGE SW3



An exceptional investment opportunity available in the heart of affluent Knightsbridge

Situated on a pretty treelined cul-de-sac just off Brompton Road, this grand stucco-fronted freehold property comprises eighteen flats set across seven floors. With well-maintained communal areas, the property also benefits from having planning permission in place to add a further floor.

Beaufort Gardens is located within a close proximity to world renowned retail destinations such as Harrods and Harvey Nichols, and within easy reach of the boutiques, restaurants, and amenities of Brompton Road, Sloane Square and Kings Road.

- Comprises eighteen flats
- Seven floors
- Approximately 4,892 sq ft
- On-street parking available (parking permit)

Tenure Freehold

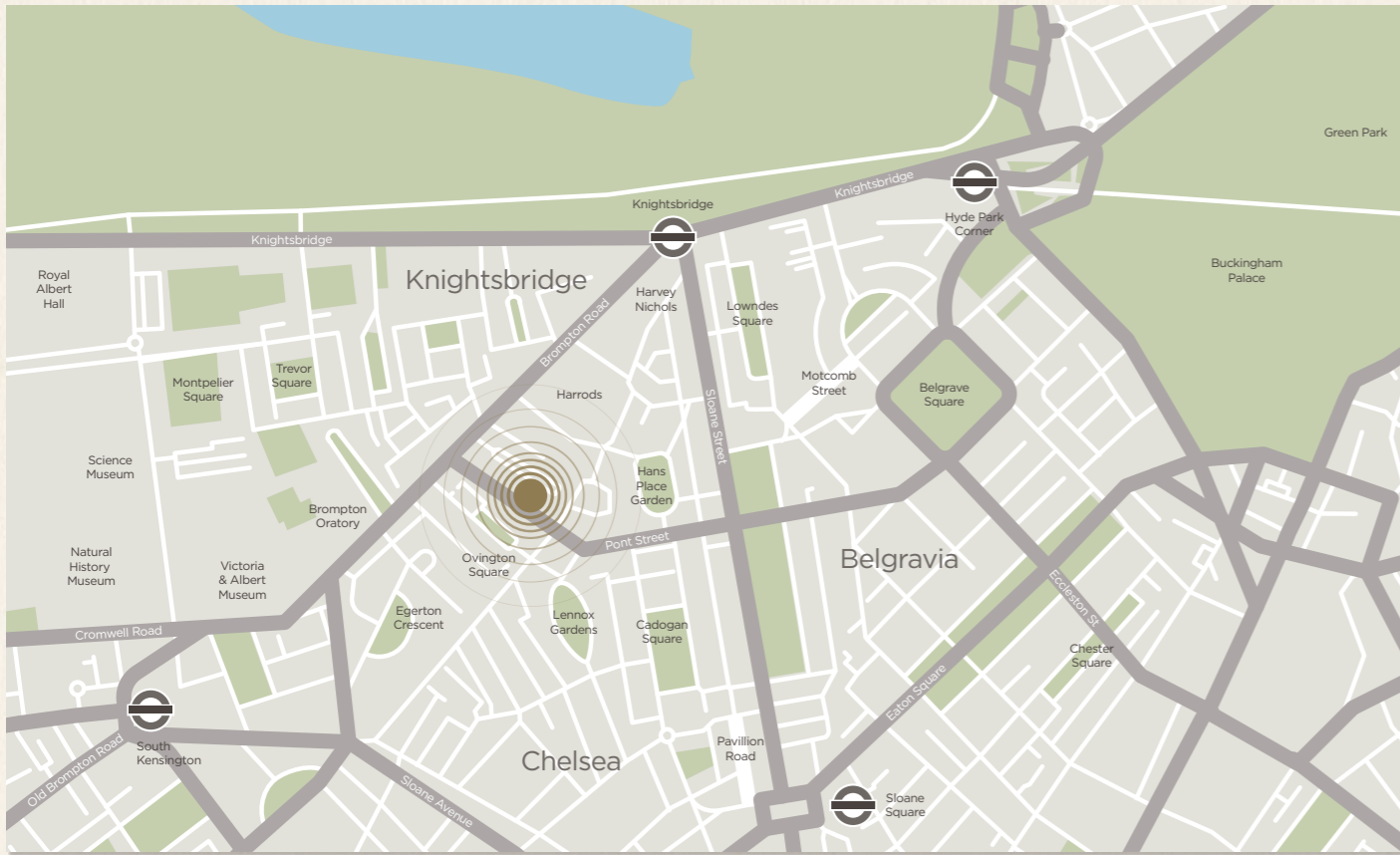
Guide Price £10,250,000

Local Authority Royal Borough of Kensington & Chelsea

FLAT	EPC	COUNCIL TAX	FLAT	EPC	COUNCIL TAX
01	D	E	10	D	D
02	D	E	11	D	D
03	D	D	12	D	D
04	D	E	13	C	B
05	D	B	14	D	B
06	D	E	15	D	D
07	D	E	16	E	D
08	D	E	17	E	B
09	D	E	18	E	B



Approximate Gross Internal Floor Area
4,892 sq ft / 454.5 sq m



These particulars are for general information only and do not constitute any part of an offer or contract. All statements contained therein are made without responsibility on the part of the vendors or lessors and are not to be relied upon as statement or representation of fact. Intending purchasers or lessees must satisfy themselves, by inspection, or otherwise, as to the correctness of each of the statements or dimensions contained in these particulars. This floorplan is for guidance only and not for valuation purposes. 28/11/23 JLL-23101-07MS

Floorplan for guidance only, not to scale or valuations purposes. It must not be relied upon as a statement of fact. All measurements and areas are approximate and have been prepared in accordance with the current edition of the RICS Code of Measuring Practice.



JLL KNIGHTSBRIDGE

020 7306 1600

knightsbridge@eu.jll.com

jll.co.uk/residential
