



## Buckingham Gate, London SW1E

Price £1,775 per week - Furnished









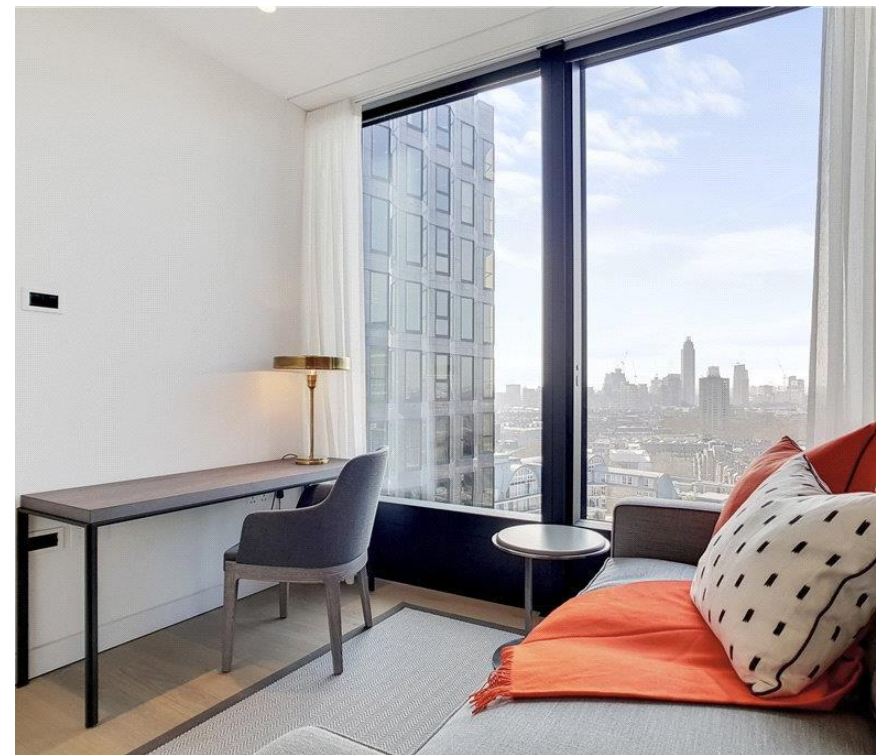
# Description

A beautifully presented thirteenth floor apartment which has been interior designed by TH2 Designs and offers spectacular south westerly views. Accommodation comprises master bedroom with en suite shower room, two further double bedrooms, one bathroom, a fully fitted kitchen with seating area adjoining a stylishly decorated reception. Further benefits include wooden flooring and marble back drops with floor to ceiling glass windows providing natural light and city views. Underground parking is available by separate negotiation.

Please note that due to building works in the area, the skyline views from the apartments may have changed from those shown in the marketing pictures.

As well as paying the rent, you may also be required to make permitted payments. Please visit [jll.co.uk/fees](http://jll.co.uk/fees) for details of fees which may be payable when renting a property. If your tenancy does not qualify as an AST, additional fees may apply.

- 3 Double bedrooms
- 1 Bathroom (en suite)
- 1 Shower room
- Reception room
- Open plan kitchen
- Thirteenth floor
- Lift
- 24 Hour concierge
- Parking by negotiation
- Approx. 1,148 sq ft (107 sq m)



# Floorplan

1,148 sq ft | 107 sq m

**Knightsbridge**  
174 Brompton Road,  
London SW3 1HP  
+4420 7306 1600  
[lettingsknightsbridge@eu.jll.co](mailto:lettingsknightsbridge@eu.jll.co)

*Urban living, your way.*

[jll.co.uk/residential](https://jll.co.uk/residential)

© 2019 Jones Lang LaSalle IP, Inc. All rights reserved. All information contained herein is from sources deemed reliable; however, no representation or warranty is made to the accuracy thereof.

