



- 5 Bedrooms
- Character Features
- Garden room/bar
- Sauna
- Spacious Lounge



BELVOIR!

*The Collection*

BELVOIR!

*The Collection*

102 Newcastle Road, Stone  
£2500 PCM



Belvoir Stafford & Stone are proud to offer this stunning recently renovated detached Town House to our premium brand, Belvoir! 'The Collection', our exclusive range of individual, bespoke and exceptional properties. . We would like to proudly welcome '102 Newcastle Road' to 'The Collection'.

Dating back to the early 1900s this magnificent family home occupies a generous plot on the lovely canalside Newcastle Road in Stone and offers a rare opportunity for any prospective tenant.



There is substantial versatile accommodation over two floors in this characterful property which has been beautifully modified by the current owners. This includes a large dining kitchen with small lounge area off, a basement sauna, 4 of the 5 bedrooms have ensembles and there is a balcony overlooking the canal!

Outside there is an entertainment area with astroturf and cooking area with BBQ and pizza oven.





- Modernised Town House dating back to the early 1900s.
- Some Original Features.
- Five Bedrooms & Multiple Reception Rooms.
- Garage, Outside Cooking Area and Canalside Access!



*Could this be your next chapter?*

## *Living Space*

You are spoilt for choice at 102. With a choice of 2 living rooms, a home office and a sauna, you will never not have an area to relax!



## *Kitchens*

Are you a budding Master Chef? Well you will have masses of kitchen space to perfect your craft. A spacious and well equipped kitchen awaits!





## Bedrooms

With 5 Bedrooms (4 Ensuite), you'll have space for all of your family, guests and friends!



*Bathrooms*  
5 high spec  
bathrooms and  
ensuites!



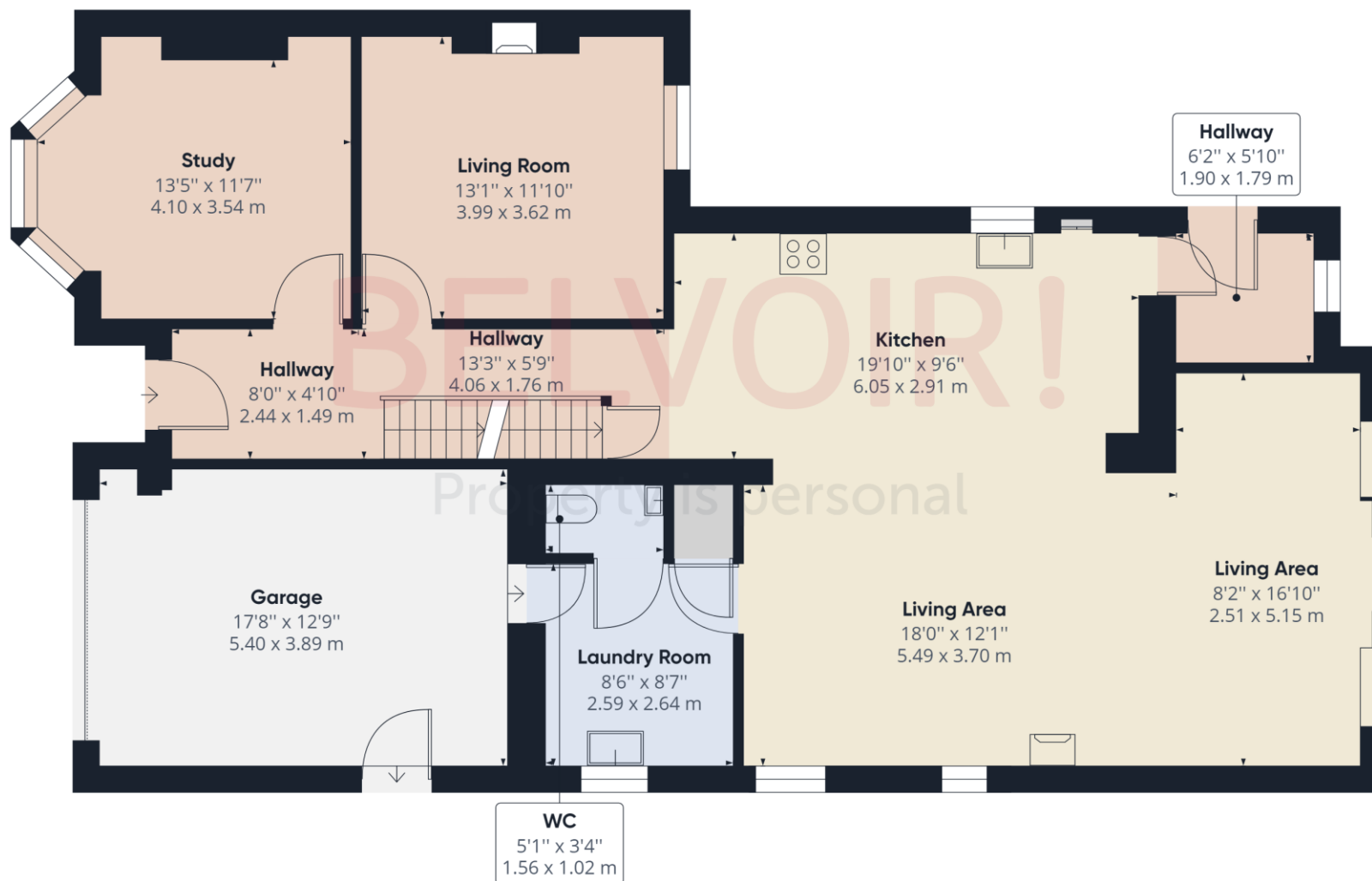
## Outside Space

A generous garden with lovely aspect! It provides a lovely area for children to play!



## Canal View Balcony & Snug

A lovely canal view balcony off the master bedroom with spiral staircase down to the garden! The garden also includes an outside cooking area & snug.



Approximate total area<sup>(1)</sup>

1370.44 ft<sup>2</sup>

127.32 m<sup>2</sup>

(1) Excluding balconies and terraces

While every attempt has been made to ensure accuracy, all measurements are approximate, not to scale. This floor plan is for illustrative purposes only.

GIRAFFE360

Ground Floor



Approximate total area<sup>(1)</sup>

1155.95 ft<sup>2</sup>

107.39 m<sup>2</sup>

(1) Excluding balconies and terraces

While every attempt has been made to ensure accuracy, all measurements are approximate, not to scale. This floor plan is for illustrative purposes only.

GIRAFFE360