



## Tenison Manor, Cottenham, Cambridge, CB24 8XL

£1,250 pcm

Unfurnished

2 Bedrooms

Available from 06/09/2025

EPC rating: C

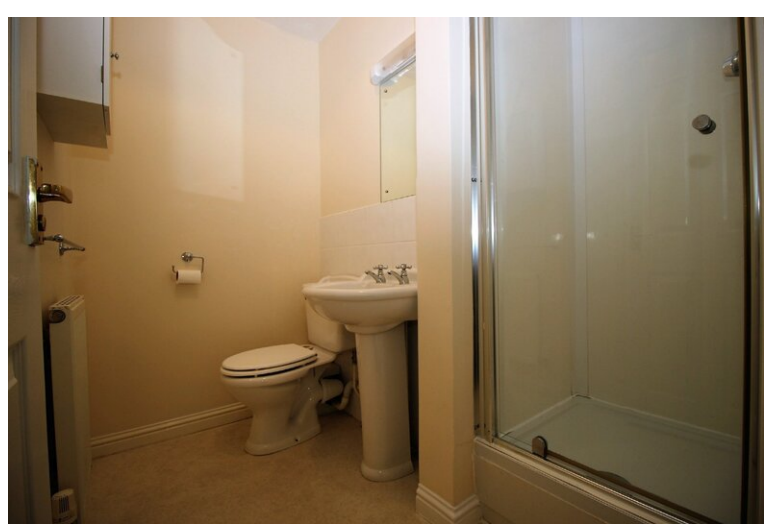
45 Mill Road, Cambridge CB1 2AW

TEL: 01223 322552

E-MAIL: [cambridgelettings@pocock.co.uk](mailto:cambridgelettings@pocock.co.uk)

WEB: [www.pocock.co.uk](http://www.pocock.co.uk)





## Tenison Manor, Cottenham, Cambridge CB24 8XL

Located in Cottenham, this two bed end of terrace home is well presented, with off street parking, enclosed rear garden which includes a shed. Cottenham is a village north of Cambridge with a good selection of shops, pubs and other amenities. Primary and secondary schools. Regular bus service.

- Two bed home
- Garden with shed
- Off street parking
- Offered unfurnished.
- Deposit - £1442.00
- EPC - C

Rent: £1,250 pcm

Viewing by appointment

Located north of Cambridge, Cottenham is a popular village offering a selection of shops, pubs and other amenities: it also has a primary and secondary school and a regular bus service to the city. This house is in an attractive residential area and has an enclosed rear garden with access to the allocated parking.

### LIVING ROOM

15'5" x 10'2" (4.70 m x 3.10 m)

Well proportioned living space.

### KITCHEN

13'5" x 9'10" (4.10 m x 3.00 m)

Space for a table and chairs and access to the back garden. The kitchen is fitted with a gas hob, extractor hood over, electric oven and there is space and plumbing for the washing machine and freestanding fridge freezer (both could be supplied if required).

### BEDROOM 1

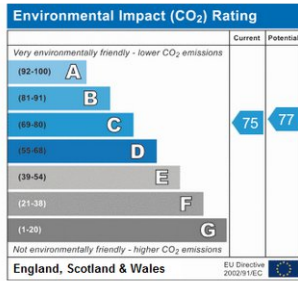
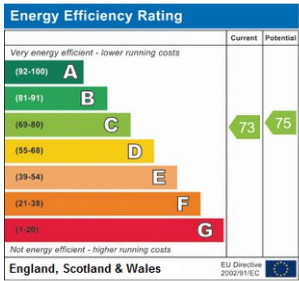
11'6" x 10'2" (3.50 m x 3.10 m)

Measurements show the widest points. Single wardrobe built in. Cupboard with the hot water tank in. En-suite shower room with WC and basin.

### BEDROOM 2

10'2" x 6'11" (3.10 m x 2.10 m)

Single built in wardrobe.



## BATHROOM

6'3" x 5'11" (1.90 m x 1.80 m)

Bath with hand shower, basin and WC.

## GARDEN

Enclosed rear garden with shed and access to the off street parking.

**Council Tax Band:** C

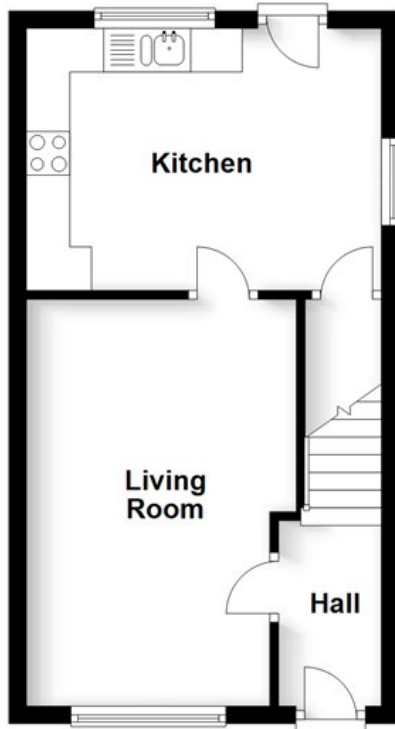
**Holding Deposit:** £288

## Material Information:

[https://sprift.com/dashboard/property-report/?access\\_report\\_id=4457599](https://sprift.com/dashboard/property-report/?access_report_id=4457599)

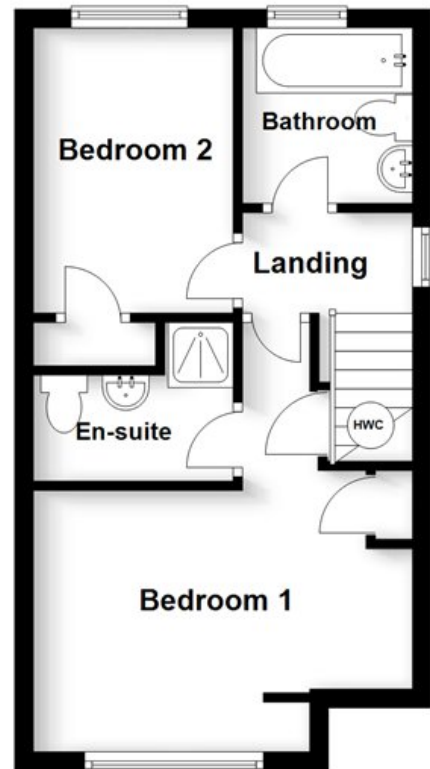
### Ground Floor

Approx. 31.8 sq. metres (341.8 sq. feet)



### First Floor

Approx. 31.0 sq. metres (333.7 sq. feet)



## Applying for a Property

British or Irish Citizens must evidence their right to rent from the documents listed below.

Either:

- a passport
- a travel document issued by the Home Office
- an immigration status document sent to you when you were given permission to stay in the UK

All of the above must include a Home Office endorsement. For example, a stamp or a vignette (sticker) inside. This must say you have one of the following

- indefinite leave to enter or indefinite leave to remain in the UK
- no time limit to your stay in the UK
- a certificate of entitlement to the right of abode
- exemption from immigration control
- limited leave to enter or limited leave to remain in the UK, or permission to stay for a time limited period - this must cover the time you'll be renting
- a certificate of entitlement to readmission to the UK

Non British or Irish Citizens will need to obtain a share code and including the following documentation to indicate the named person may stay in the UK. <https://www.gov.uk/prove-right-to-rent/get-a-share-code-online>

Either:

- a British passport (current or expired)
- an Irish passport or passport card (current or expired)
- a certificate of registration or naturalisation as a British citizen

**OR**

Two of the following:

- a current UK driving licence (full or provisional)
- a full birth or adoption certificate from the UK, Guernsey, Jersey, the Isle of Man or Ireland
- a letter from your employer
- a letter from a British passport holder in an accepted profession
- a letter from a UK government department or local council
- proof that you currently receive benefits
- a letter from a British school, college, or university that you currently go to
- a Disclosure and Barring Service (DBS) certificate
- proof that you have served in the UK armed forces
- a letter from a private rented sector access scheme or a voluntary organisation assisting you with housing
- a letter confirming you have been released from prison within the past 6 months
- a letter confirming you are on probation from your offender manager
- a letter from the UK police about the theft of your passport

These checks need to be followed up either 12 months from the date of the previous check, or before the expiry of the person's right to live in the UK. Copies of these documents are kept and will also be sent to our reference company so they can be verified

### Important

All applications and negotiations are subject to contract, successful referencing and landlord approval. The payment of the initial monies will be deemed as acceptance of these terms.

### Deposit held during the tenancy:

The security deposit of no more than the equivalent of 5 weeks' rent (or 6 weeks' for a property with a rent of over £50,000 per year), is held during the tenancy and this, together with the initial rent payment, is to be received by Pocock & Shaw before the tenancy can commence.

### Other costs a tenant may incur

In addition to the deposit and rent, a tenant may potentially be charged for the following when required:

1. A holding deposit of no more than one weeks' rent;
2. A default fee for late payment of rent (after 14 days);
3. Reasonable charges for lost keys or security fobs;
4. Costs associated with contract variation when requested by the tenant, at £50, or reasonable costs incurred if higher.
5. Costs associated with early termination of the tenancy, when requested by the tenant; and
6. Costs in respect of bills - utilities, communication services, TV licence, council tax and green deal or other energy efficiency charges.