

Flat - Ground Floor

# 1 HARRIS CLOSE, ENFIELD, EN2 8BB

Per Calendar Month

## £1,400

### FEATURES

- One Bed
- Kitchen
- Communal Garden
- EPC C
- Spacious lounge
- Ground Floor
- Entrance phone system
- Council Tax B



## RASH & RASH

# 1 Bedroom Flat - Ground Floor located in Enfield

Newly decorated one bedroom apartment on the ground floor of this purpose built block in the Gordon Hill part of Enfield. The property has a nice rear outlook over communal gardens, parking for residents and is ideally located within 500M of Gordon Hill Overground Station (Moorgate).

Call us on

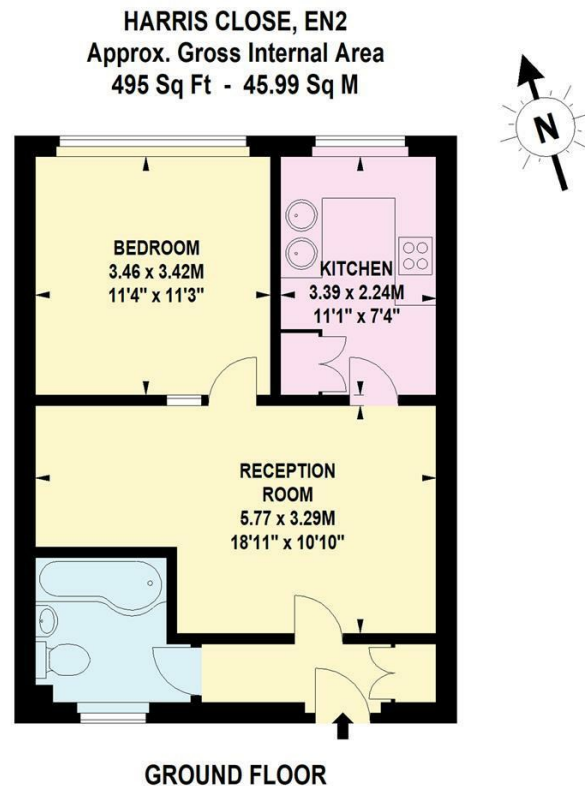
**02088822828**

[info@rashandrash.com](mailto:info@rashandrash.com)

<https://www.rashandrash.com/>

**Council Tax Band**

**B**



Energy Efficiency Rating		
	Current	Potential
Very energy efficient - lower running costs		
(92 plus) <b>A</b>		
(81-91) <b>B</b>		
(69-80) <b>C</b>	75	78
(55-68) <b>D</b>		
(39-54) <b>E</b>		
(21-38) <b>F</b>		
(1-20) <b>G</b>		
Not energy efficient - higher running costs		
England & Wales		
EU Directive 2002/91/EC		

Agents Note: Whilst every care has been taken to prepare these particulars, they are for guidance purposes only. All measurements are approximate and are for general guidance purposes only and whilst every care has been taken to ensure their accuracy, they should not be relied upon and potential buyers are advised to recheck the measurements.

**RASH & RASH**