

FREEHOLD



House - Terraced

54 WHITE HART LANE, LONDON, N22 5RL

Asking Price

£425,000

FEATURES

- Three Bedrooms
- Kitchen
- South facing rear Garden
- Reception Room
- Bathroom
- Directly opposite White Hart Lane Recreation Ground



RASH & RASH

3 Bedroom House - Terraced located in London

Located in the heart of Wood Green, this three-bedroom mid terraced house offers living space of 975 sq.ft, presenting an excellent opportunity for families or investors seeking a property with potential. While some modernisation is required, the home boasts a downstairs cloakroom, separate kitchen and separate lounge, three well proportioned bedrooms, a family bathroom and a private rear garden, providing a solid foundation to create a beautiful family residence.

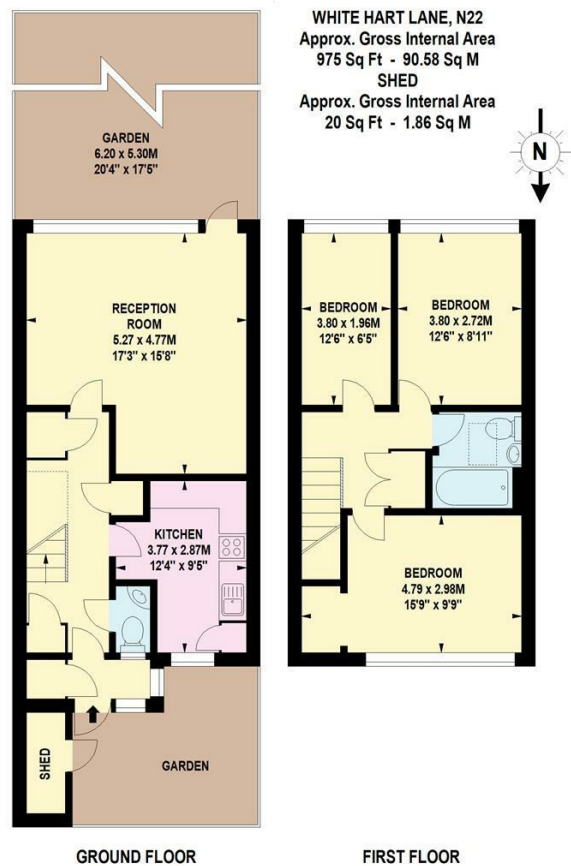
Situated directly opposite the historic White Hart Lane Recreation Ground—affectionately known as 'Pond Park'—residents can enjoy expansive green spaces, a model boating lake, and sports facilities including cricket and football pitches.

Commuting is a breeze with Wood Green Underground Station (Piccadilly Line) just 650 meters away, offering swift access to Central London. Additionally, several bus routes serve the area, ensuring connectivity to various parts of the city.

Families will appreciate the proximity to schools such as Earham Primary School and St Thomas More Catholic School.

Call us on
02088822828
info@rashandrash.com
<https://www.rashandrash.com/>

Council Tax Band
D



Energy Efficiency Rating		
	Current	Potential
Very energy efficient - lower running costs		
(92 plus) A		89
(81-91) B		
(69-80) C	69	
(55-68) D		
(39-54) E		
(21-38) F		
(1-20) G		
Not energy efficient - higher running costs		
England & Wales		
EU Directive 2002/91/EC		

Agents Note: Whilst every care has been taken to prepare these particulars, they are for guidance purposes only. All measurements are approximate and are for general guidance purposes only and whilst every care has been taken to ensure their accuracy, they should not be relied upon and potential buyers are advised to recheck the measurements.

