

FREEHOLD



House - Semi-Detached

38 QUEEN ELIZABETHS DRIVE, LONDON, N14 6RD

Asking Price

£1,025,000

FEATURES

- Three Bedrooms
- Two Reception Rooms
- 99 ft. Garden
- Close to Southgate Tube Station
- Cloakroom
- Lovely Kitchen/Diner
- Garage & Driveway
- Overlooking Grovelands Park



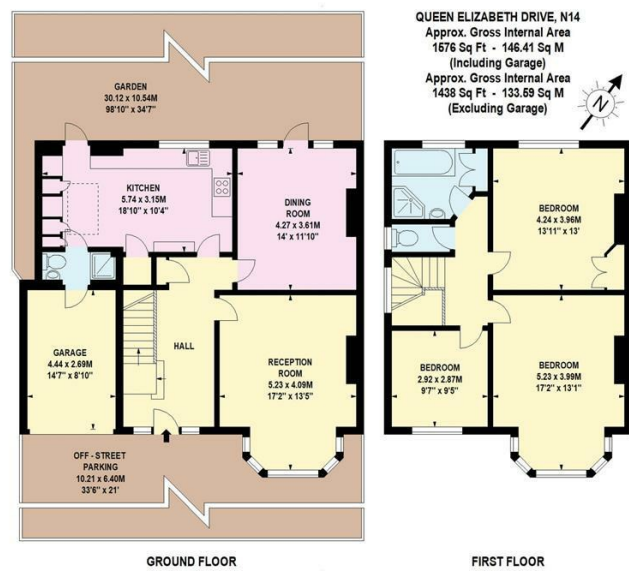
RASH & RASH

3 Bedroom House - Semi-Detached located in London

Situated adjacent to Grovelands Park, this beautifully presented and extended three bedroom semi-detached home offers both charm and character. Just a short walk from Southgate Tube Station (Piccadilly Line), as well as a variety of schools, shops, restaurants, and transport links, this property enjoys a prime location with views over Grovelands Park.

The spacious interior welcomes you with a warm entrance hall featuring wood flooring, leading to a bright lounge, a separate dining room, and an open-plan kitchen/diner/breakfast room and a downstairs cloakroom. The garage can also be accessed from the house. Upstairs, the property boasts three generously sized bedrooms, a family bathroom, and a separate wc. There is also access to the loft, offering potential for further extension, subject to the usual planning consents. There is scope to further extend this property on the first floor as the kitchen was built with foundation to extend above the ground floor (STPP).

The rear garden, extending close to 100 feet, provides a tranquil outdoor retreat with a paved patio, a well-maintained lawn, mature trees and shrubs, a timber shed, and a greenhouse. The property also benefits from a garage, accessible from both the house and the driveway, featuring an electric up-and-over door for added convenience.



Call us on

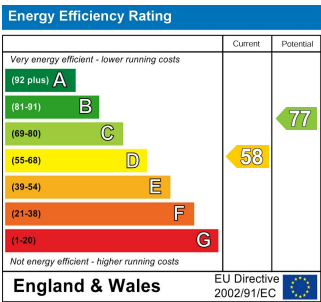
02088822828

info@rashandrash.com

<https://www.rashandrash.com/>

Council Tax Band

F



Agents Note: Whilst every care has been taken to prepare these particulars, they are for guidance purposes only. All measurements are approximate and are for general guidance purposes only and whilst every care has been taken to ensure their accuracy, they should not be relied upon and potential buyers are advised to recheck the measurements.

RASH & RASH