



House - Detached

# 1 BOURNE AVENUE, LONDON, N14 6PB

PCM

£4,350

## FEATURES

- Five bedrooms
- Fitted Kitchen
- En suite bathroom
- Double garage
- Three reception rooms
- Family bathroom
- Rear garden
- Gated off street parking



RASH & RASH

# 5 Bedroom House - Detached located in London

Affording 3257sq ft of accommodation, the property provides five bedrooms, three reception rooms, driveway, double garage and a 78ft rear garden. Ideally located for both access to both Grovelands Park 0.1miles and Southgate underground station 0.3miles. A substantial property with presence.

Call us on

**02088822828**

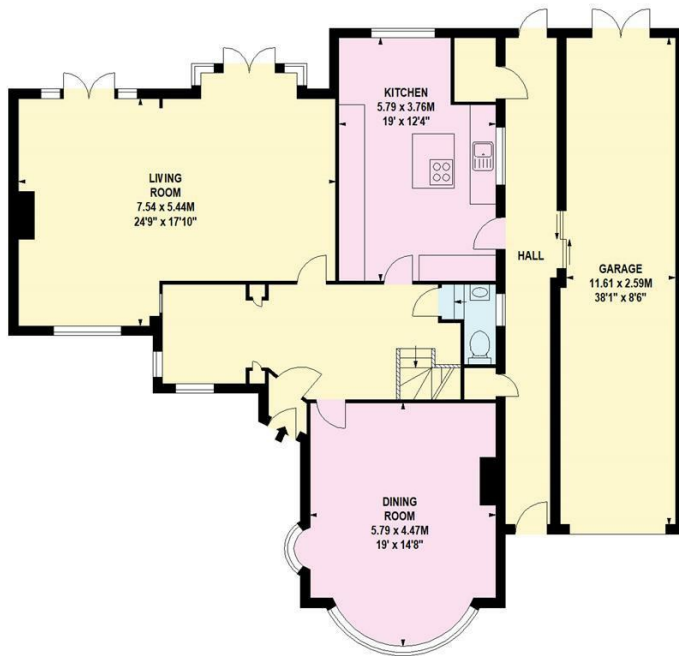
[info@rashandrash.com](mailto:info@rashandrash.com)

<https://www.rashandrash.com/>

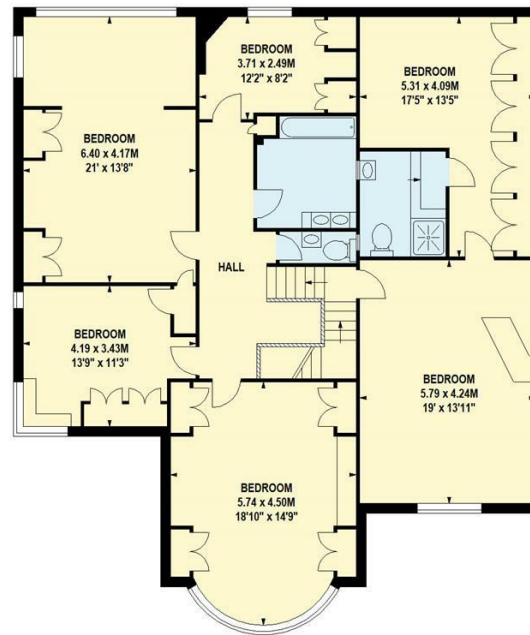
**Council Tax Band**

**H**

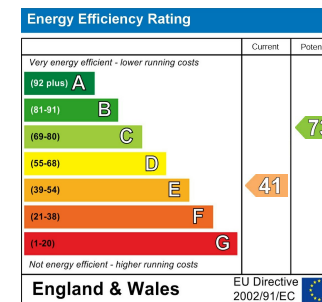
BOURNE AVENUE, N14  
Approx. Gross Internal Area  
3257 Sq Ft - 302.58 Sq M  
(Including Garage)



GROUND FLOOR



FIRST FLOOR



Agents Note: Whilst every care has been taken to prepare these particulars, they are for guidance purposes only. All measurements are approximate and are for general guidance purposes only and whilst every care has been taken to ensure their accuracy, they should not be relied upon and potential buyers are advised to recheck the measurements.

**RASH & RASH**