



LEASEHOLD

Flat

# 94 DALRYMPLE CLOSE, LONDON, N14 4LQ

Asking Price

# £350,000

## FEATURES

- Long Lease 125 years
- Close to Southgate Station
- 2 Bedrooms
- EPC C
- Quiet Location
- Ideal for a First Time Buyer or Investor
- Allocated Parking Space
- Council Tax D



# RASH & RASH

# 2 Bedroom Flat located in London

Call us on

**02088822828**

[info@rashandrash.com](mailto:info@rashandrash.com)

<https://www.rashandrash.com/>

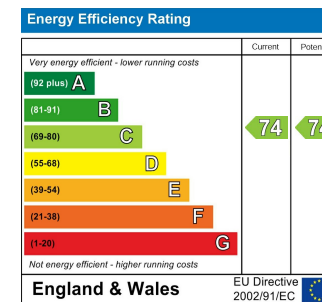
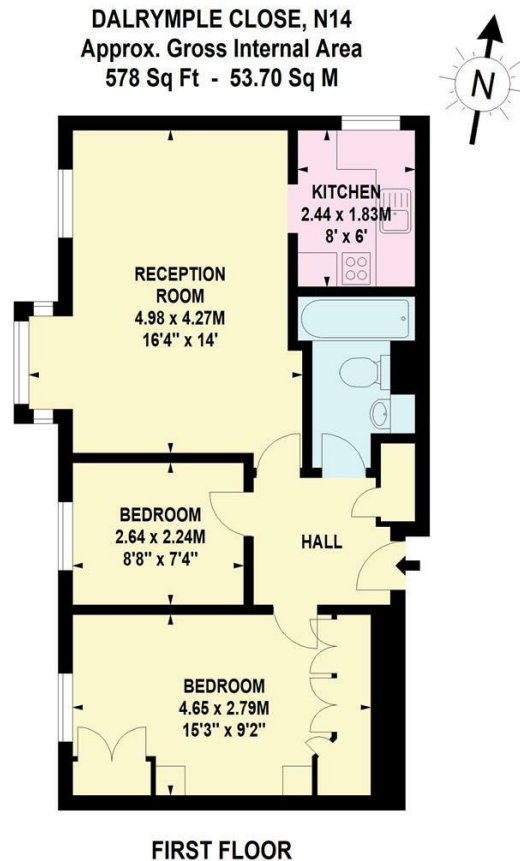
Situated in a quiet residential cul-de-sac, just a short walk from Southgate Tube Station (approximately 0.5 miles/0.8 km away), this charming and well-presented two-bedroom first-floor apartment is part of the sought-after Dalrymple Close Development. The property is offered with a new 125-year lease.

This lovely apartment boasts two generously sized bedrooms, with the main bedroom featuring built-in wardrobes from Space Makers. There is a spacious living room, a small fitted kitchen, and a family bathroom. Additional benefits include Economy 7 heating, allocated parking, visitor spaces, and beautifully maintained communal gardens.

Perfect for first-time buyers or as a buy-to-let investment, this apartment is conveniently located near local amenities, transport links, and excellent schools.

**Council Tax Band**

**D**



Agents Note: Whilst every care has been taken to prepare these particulars, they are for guidance purposes only. All measurements are approximate and are for general guidance purposes only and whilst every care has been taken to ensure their accuracy, they should not be relied upon and potential buyers are advised to recheck the measurements.

**RASH & RASH**