



WEIRFIELD ROAD

EXETER, EX2 4DW | Guide Price £195,000



Robert Williams

SALES | LETTINGS | AUCTIONS

Located just down from Exeter's vibrant and historic Quay, sit, relax and take in the view.



WEIRFIELD ROAD

EXETER, EX2 4DW

A One-Bedroom, Ground Floor Apartment with uninterrupted views of the River Exe.

Located in popular Weirfield Road, close to Exeter City Centre and is ideally located within walking distance of Exeter's historic quayside, local amenities, and excellent transport links.

The accommodation comprises; entrance hallway, open plan kitchen, sitting and dining room with large windows which overlook the river, double bedroom, shower room and a further room, too small to be a bedroom but ideal either for a small home office, a walk in wardrobe or simply as storage.

The main feature of the property is the stunning views over the river. There is a door from the sitting room which leads out into the communal gardens and a small patio - an ideal spot to relax and watch the world go by.

This deceptively spacious apartment boast a recently fitted kitchen and shower room, double glazing and gas central heating.

Offered with vacant possession and no onward chain. Viewing is essential.



1  bedrooms 1  bathrooms
1  receptions  car spaces

Local Authority: Exeter City Council

Council Tax Band: A

Tenure: Freehold

Heating: Gas Central Heating

Services: Mains water and drainage

Energy Efficiency Rating: D



27 Weirfield Road, EX2 4DW

Approximate Gross Internal Area = 41.97 sq m / 451.75 sq ft

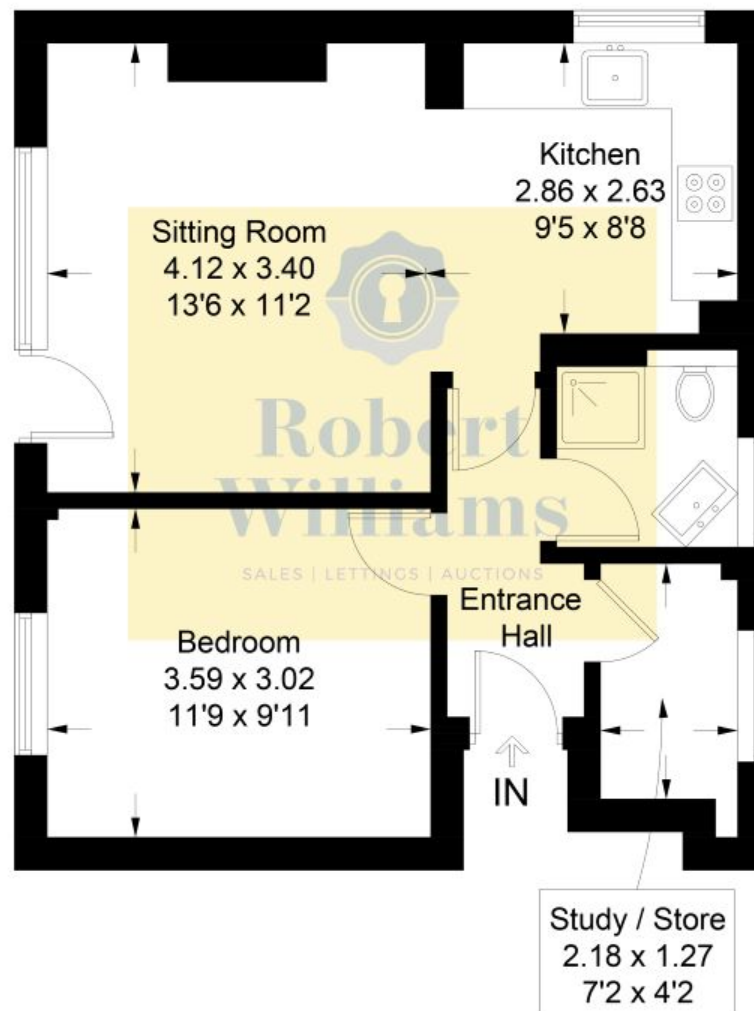


Illustration for identification purposes only, measurements are approximate, not to scale. Fourlabs.co © (ID1229204)



Robert Williams

SALES | LETTINGS | AUCTIONS

Robert Williams Estate Agents, 2 Southernhay West, Exeter, EX1 1JG

Tel: 01392 204800 • sales@robertwilliams.co.uk • robertwilliams.co.uk

IMPORTANT: we would like to inform prospective purchasers that these sales particulars have been prepared as a general guide only. A detailed survey has not been carried out, nor the services, appliances and fittings tested. Room sizes should not be relied upon for furnishing purposes and are approximate. If floor plans are included, they are for guidance only and illustration purposes only and may not be to scale. If there are any important matters likely to affect your decision to buy, please contact us before viewing the property.