



BROADMOOR LANE

OKEHAMPTON, EX20 1SH



Robert Williams

SALES | LETTINGS | AUCTIONS

“The Willows is a smallholding in a tranquil & beautiful rural setting with numerous fenced paddocks and a detached barn”.



The Willows

OKEHAMPTON, EX20 1SH

The willows is a delightful smallholding including approx 5 acres of paddocks, extensive driveway parking, detached barn and timber built 3 bedroom detached bungalow with certification of lawful use. All located in a rural location on the fringes of Okehampton, with stunning views across Devon countryside towards Dartmoor.

THE PROPERTY

The internal accommodation includes a stunning open plan living/kitchen/dining area with a modern fitted kitchen with feature Island workspace and breakfast bar, other benefits include Belfast sink and Rangemaster cooker, feature Woodburner and Bifold doors opening to decking and out to garden/paddocks. Other rooms include a utility, conservatory and three bedrooms. Outside of the property is extensive driveway parking for multiple cars, two large detached outbuildings both with power, one with the solar panels (previously the garage) to the roof the other a spacious barn currently being used to house goats.

There are then multiple paddocks adjacent and behind the house, plus a shed containing the operating system for the water retrieval via the Bore hole.

THE LOCATION

Okehampton offers a wide range of shops and services and has three supermarkets including a Waitrose. The town offers a array of independent shops and strong educational options for all ages, plus a modern leisure centre.. The town is situated on the northern fringes of the Dartmoor National Park.

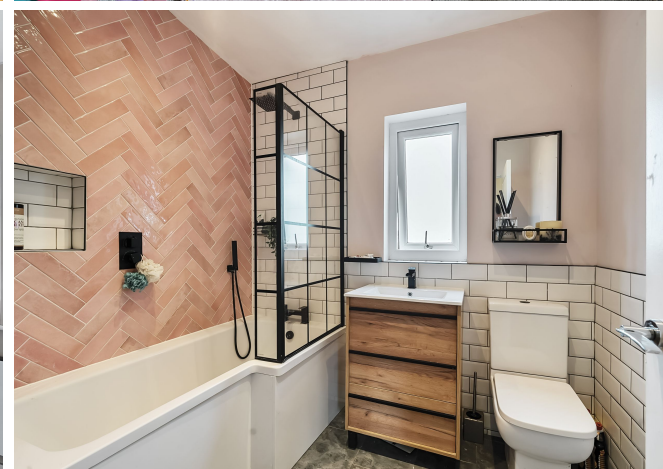
3  bedrooms 1  bathrooms
2  receptions 8  car spaces

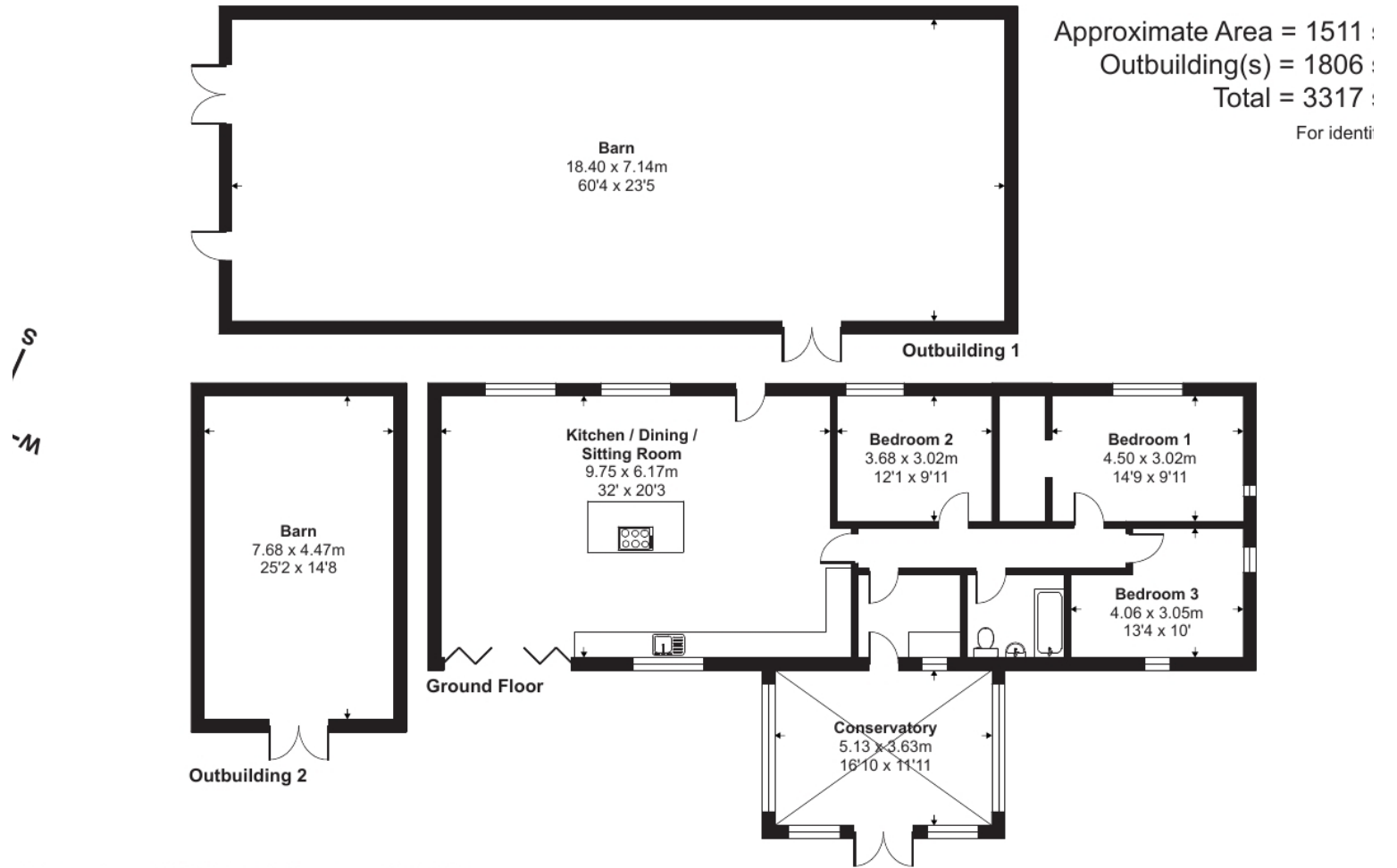
Local Authority: West Devon Council

Council Tax Band: A

Heating: Gas Central Heating

Services: Shared Bore hole water & sewerage treatment plant drainage, 15 Solar panels plus Battery storage. **Energy Efficiency Rating:** Exempt





ed in accordance with RICS Property Measurement 2nd Edition,
 rnational Property Measurement Standards (IPMS2 Residential). © nitchecom 2024.
 js. REF: 1215367



Robert Williams

SALES | LETTINGS | AUCTIONS

Robert Williams Estate Agents, 2 Southernhay West, Exeter, EX1 1JG

Tel: 01392 204800 • sales@robertwilliams.co.uk • robertwilliams.co.uk

IMPORTANT: we would like to inform prospective purchasers that these sales particulars have been prepared as a general guide only. A detailed survey has not been carried out, nor the services, appliances and fittings tested. Room sizes should not be relied upon for furnishing purposes and are approximate. If floor plans are included, they are for guidance only and illustration purposes only and may not be to scale. If there are any important matters likely to affect your decision to buy, please contact us before viewing the property.