



WYNDHAM ROAD

SILVERTON EXETER, EX5 4JZ



Robert Williams

SALES | LETTINGS | AUCTIONS

“A three bedroom end terrace house with private parking newly built in 2013, located in the popular village of Silverton”.



WYNDHAM ROAD

SILVERTON EXETER, EX5 4JZ

Newly built in 2013 this spacious and light 3 bedroom home is located in a quiet residential location within a sought after village which, could suit a first time or investment buyer. Features include side and rear garden with access, downstairs WC/cloakroom sitting/dining room, kitchen/breakfast room and private parking for two cars.


The Property

The internal accommodation features on the ground floor a downstairs WC/Cloakroom, extensive living room with built in understairs cupboard with the wall mounted Vaillant boiler, the kitchen breakfast area has double doors leading to the rear garden. Upstairs are three bedrooms and the family shower room.

Outside

To the front is block paved private parking area suitable two cars. The side and rear gardens are mostly paved and hard landscaped, again for low maintenance, and enclosed with wooden fence panels. There is secure gated side access and the side garden also features a timber storage shed.



3		bedrooms	1		bathrooms
1		receptions	2		car spaces

Local Authority: Mid Devon Council
Council Tax Band: C
Tenure: Freehold
Heating: Gas Central Heating
Services: Mains water and drainage
Energy Efficiency Rating: C





43A Wundham Road

Approximate Gross Internal Area = 69.1 sq m / 744 sq ft

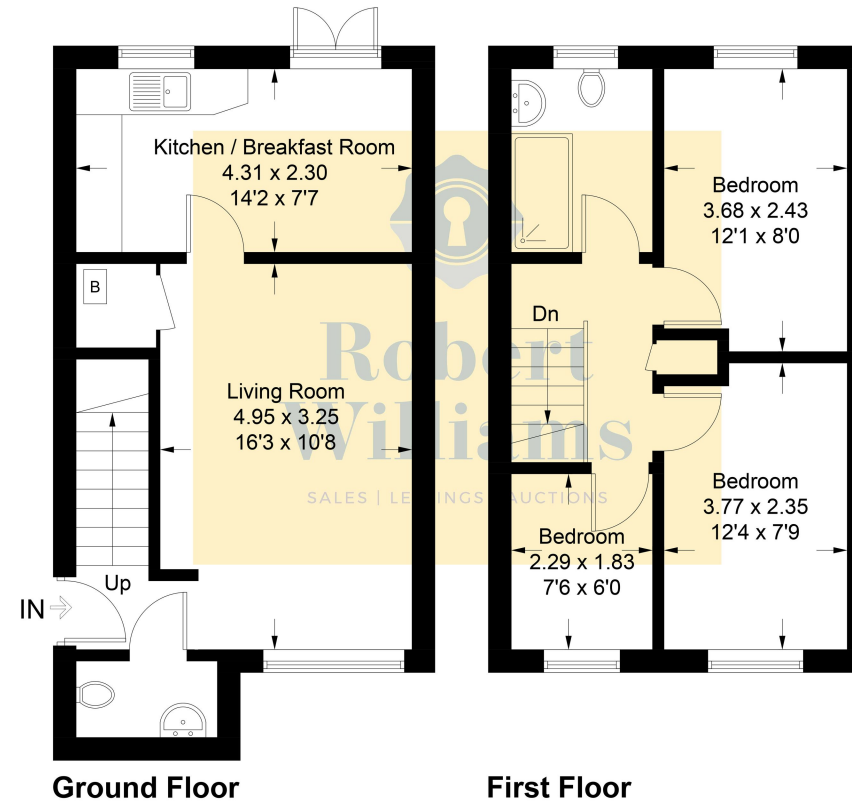


Illustration for identification purposes only, measurements are approximate, not to scale. floorplansUsketch.com © (ID1126267)



Robert Williams

SALES | LETTINGS | AUCTIONS

Robert Williams Estate Agents, 2 Southernhay West, Exeter, EX1 1JG

Tel: 01392 204800 • sales@robertwilliams.co.uk • robertwilliams.co.uk

IMPORTANT: we would like to inform prospective purchasers that these sales particulars have been prepared as a general guide only. A detailed survey has not been carried out, nor the services, appliances and fittings tested. Room sizes should not be relied upon for furnishing purposes and are approximate. If floor plans are included, they are for guidance only and illustration purposes only and may not be to scale. If there are any important matters likely to affect your decision to buy, please contact us before viewing the property.