



ISCA ROAD

EXETER, EX2 8BQ



Robert Williams

SALES | LETTINGS | AUCTIONS

“A delightful two bedroom terraced house retaining many period features located close to Exeters historic quayside ”.



ISCA Road

EXETER, EX2 8BQ

A well appointed two bedroom Victorian terrace house located in the heart of Haven banks close to Exeter's historic quayside

This property benefits from a delightful living room with feature period fireplace, modern fitted kitchen, modern shower room, two first floor bedrooms and extensive rear garden with storage shed plus gated rear access.

There is residents on street parking permit scheme available in this area.

The house is just minutes walk from Exeter's quay with its numerous bars cafes and activity centres. It is also in close proximity to Exeter St Thomas train station and local bus links. Access to the M5, A30 and A38 is also only a short drive..

The cathedral city of Exeter is a vibrant community with historic roots. Surrounded by stunning countryside and in close proximity to beautiful coastlines, the city really does offer the best of urban and rural life. Exeter offers an excellent range of transport links with London two hours away by train. Exeter International Airport offers flights across the UK, Europe and beyond.



2  bedrooms 1  bathrooms
1  receptions 0  car spaces

Local Authority: Exeter City

Council Tax Band: A

Tenure: Freehold

Heating: Gas Central Heating

Services: Mains water and drainage

Energy Efficiency Rating: D



53 Isca Road, Exeter, EX2 8BQ

Approximate Gross Internal Area = 48.3 sq m / 520 sq ft

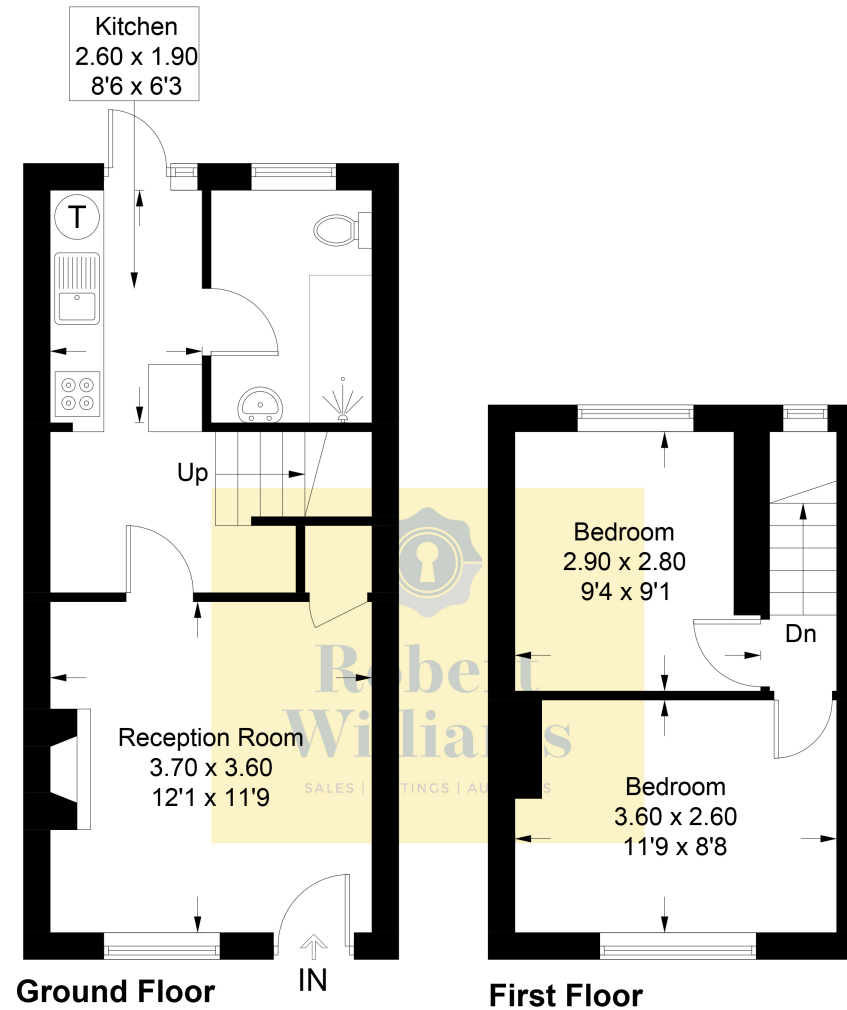


Illustration for identification purposes only, measurements are approximate, not to scale. floorplansUsketch.com © (ID1103146)



Robert Williams

SALES | LETTINGS | AUCTIONS

Robert Williams Estate Agents, 2 Southernhay West, Exeter, EX1 1JG

Tel: 01392 204800 • sales@robertwilliams.co.uk • robertwilliams.co.uk

IMPORTANT: we would like to inform prospective purchasers that these sales particulars have been prepared as a general guide only. A detailed survey has not been carried out, nor the services, appliances and fittings tested. Room sizes should not be relied upon for furnishing purposes and are approximate. If floor plans are included, they are for guidance only and illustration purposes only and may not be to scale. If there are any important matters likely to affect your decision to buy, please contact us before viewing the property.