

vivly living



The Poplar Plot 12

4 bedroom, open plan living

The Willows
DENBY DALE

Computer generated images are for illustrative purposes only and individual features often vary and may be subject to change.



KEY FEATURES

- Approx 1576 sq ft of internal living space
- Open-plan living
- 4 double bedrooms
- Premium UK manufactured kitchen
- Quartz worktop
- Gardens to the front and rear
- Double detached garage
- PV roof panels
- 'A' rated predicted EPC for energy efficiency
- 10 year Premier Guarantee
- External EV charging point

Built from natural tumbled Yorkshire stone, Poplar is a 4 bedroom family home with garage, provides approx. 1,576 sq. ft of living space, designed for today's modern way of life.

The entrance hall leads through to a study, utility room and separate WC. At the end of the hall you will find a spacious kitchen/diner which features a contemporary stylish kitchen and dining area which has bi-fold doors opening onto the rear terrace/garden. The kitchen/diner leads into the lounge in an open plan format, creating a sense of space to the ground floor.

The first floor consists of three double bedrooms and a principal bedroom with an ensuite. The house bathroom has a separate shower and bath.

Outside there is a front and private rear garden, a double detached garage built out of our signature Yorkshire stone plus private parking for an additional two vehicles.

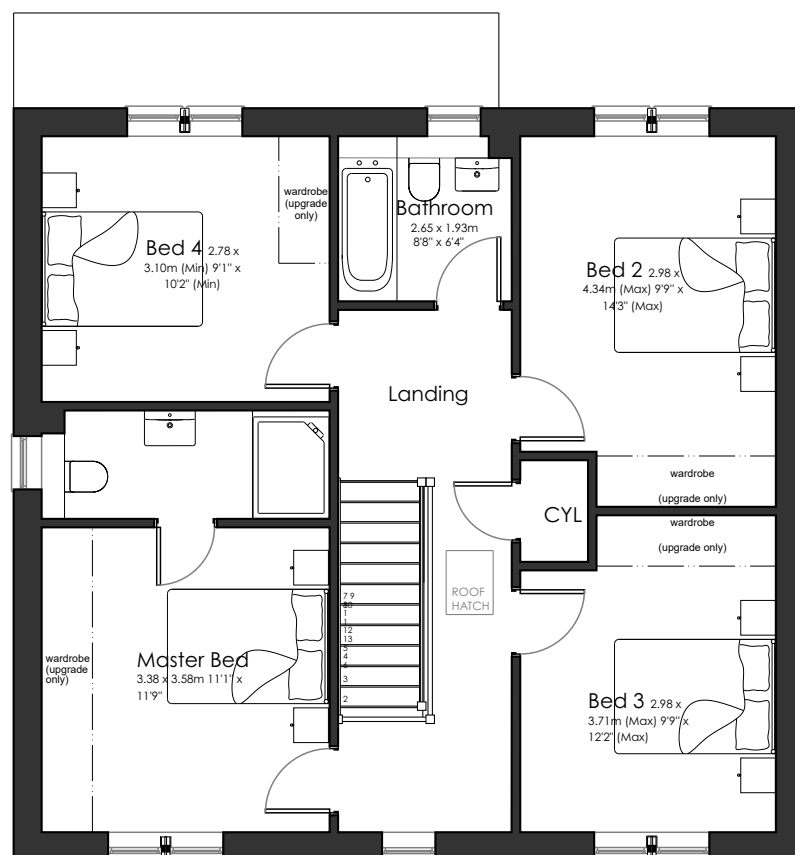
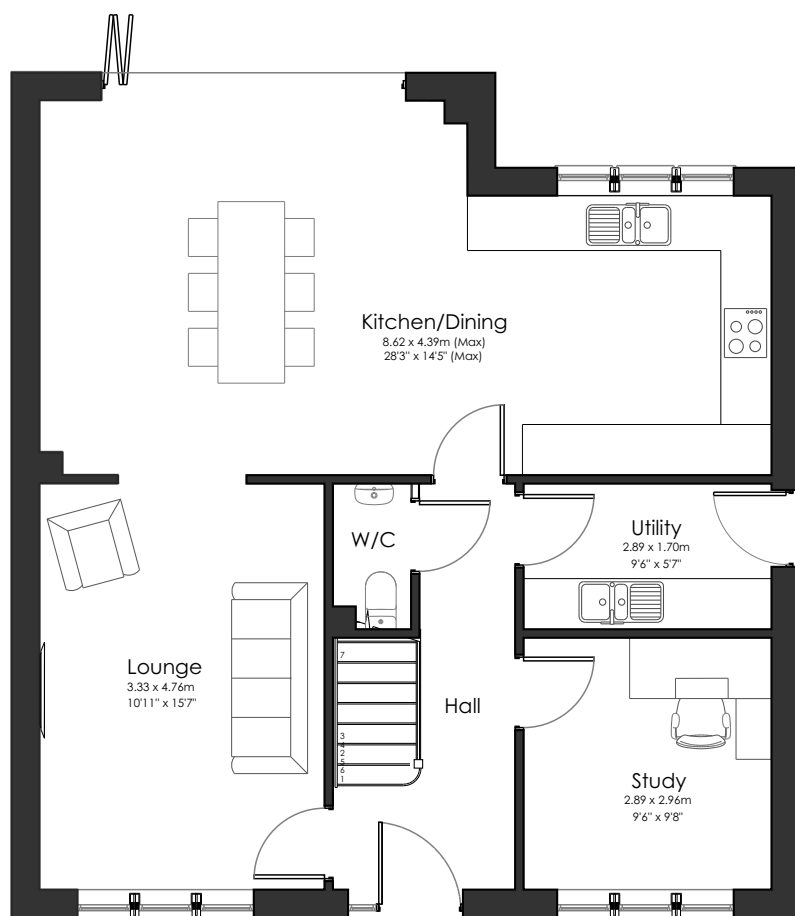
This home benefits from PV roof panels for a low carbon footprint and is and is 'A' rated for energy efficiency.





Plot 12 - *Floor plans & dimensions*

Version 3 - January 2026



*All dimensions shown are approximate



INTERIOR SPECIFICATION

- Internal oak doors
- Painted white walls & woodwork
- Profile MDF white painted skirting and architraves
- White painted softwood stair with oak handrail (newels, spindles, handrail)
- Glass balustrade
- White electrical switches and sockets
- Lighting - white spot lights throughout, except single rose light points to bedroom 2, 3, 4
- Wiring only for standard front door bell

BATHROOMS

- Bathroom - floor & wall tiling from Porcelenosa
- Full height wall tiling to shower, half tiling to bath & remaining walls
- Luxury white sanitaryware - chrome brassware and chrome towel rail
- House bathroom - follow me shower, bath and screen
- Vanity unit
- Ensuite - wall mounted shower and screen
- Electric underfloor heating in house bathroom and ensuite



KITCHEN

- Shaker style kitchen
- Integrated fridge/freezer, integrated dishwasher, integrated double oven, electric hob, and cooker extractor
- Composite 1.5 sink / glass splashback to hob / under cabinet lighting
- Position for washer/ dryer
- Solid quartz worktop to kitchen
- Luxury laminate worktop to utility

FLOORING

- Flooring fitted throughout

EXTERNAL SPECIFICATION

- Built from natural stone
- Contemporary upvc windows finished externally in a colour (the colour may differ from house to house)
- Flagged terrace and paths in natural Indian stone flag
- Standard composite front door
- 16 Amp electric vehicle charging point
- Turf to gardens
- PV roof panels for low carbon footprint and energy efficiency



The Vivly Living way

Version 3 - January 2026

At the start of your journey, our friendly and experienced team warmly welcome you to our Customer Hub based at our Knowle Grange Development in Shepley. You'll be able to browse all we have to offer to make your dream home a reality. We are with you every step of the way.

Our Customer Experience Team would be happy to discuss any additional ideas that you may have, to make your home truly tailored.

Information contained in this brochure is for guidance only and does not constitute a contract, part of a contract or a warranty.

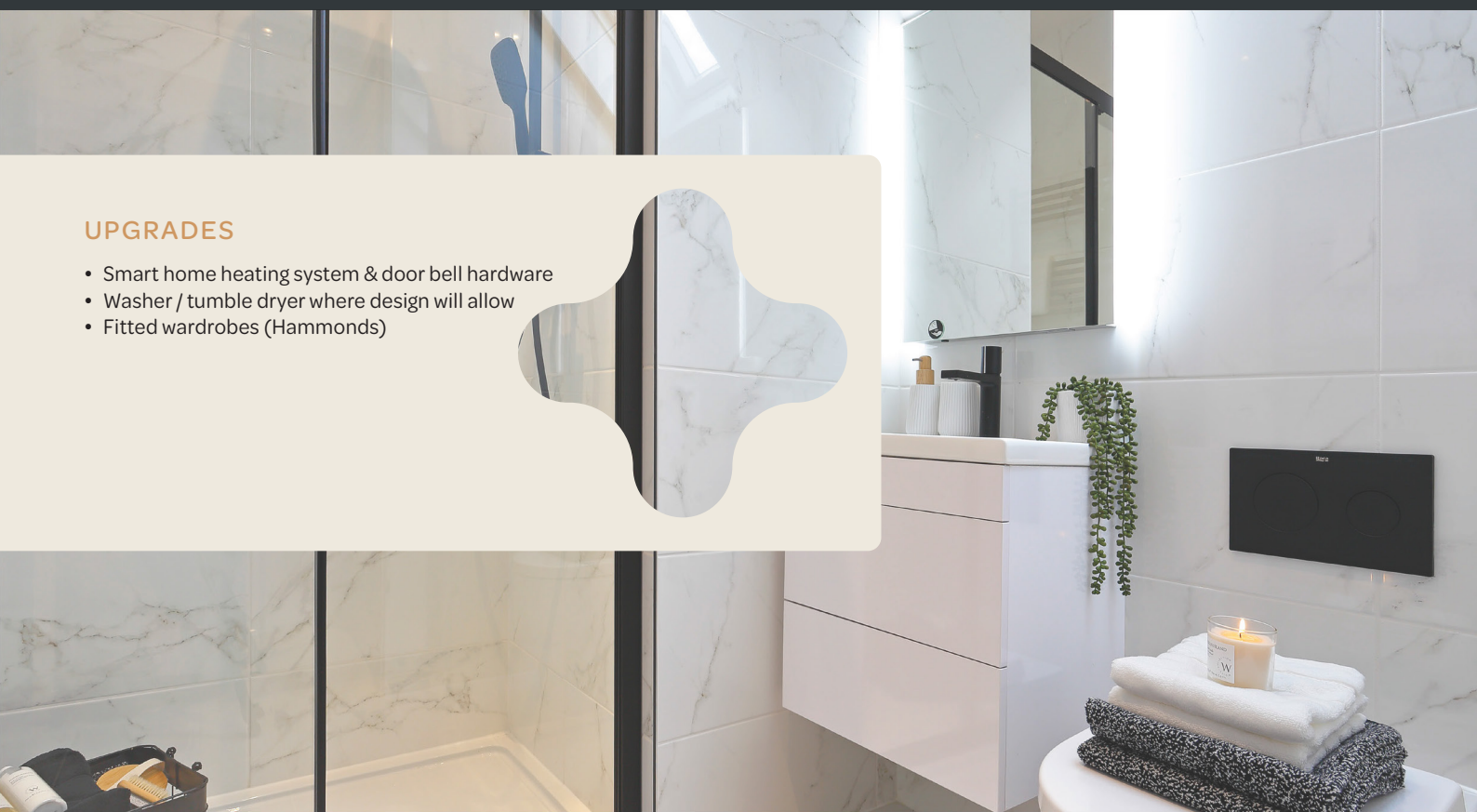
It should be noted that the representation of our developments, may not be accurate in every respect. Photography may not be of actual interiors. All plans shown are not to scale, measurements are for guidance only.

Computer generated images are for illustrative purposes only and individual features often vary from one plot to another. The specification of the houses is correct at the date of print but may be subject to change as necessary and without notice. These particulars should not be relied upon as accurately describing any of the specific matters described by an order under the Property Misdescriptions Act 1991 due to their forward nature.



UPGRADES

- Smart home heating system & door bell hardware
- Washer / tumble dryer where design will allow
- Fitted wardrobes (Hammonds)



vivly living

Call our
customer team
to view

01484 599454

Follow us on:

WWW.VIVLYLIVING.COM