



13 Midgrove Lane, Delph

£650,000

🛏️ 4 🪑 2 🚿 2

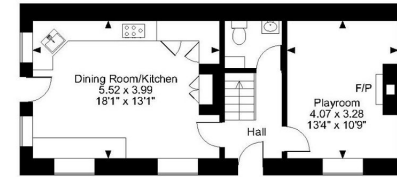


- DETACHED CHARACTER HOME
- OPEN COUNTRYSIDE
- PRIVATE WOODLAND
- LOCAL AMENITIES ON YOUR DOORSTEP
- MODERN INTERIOR
- FOUR BEDROOMS
- OFF ROAD PARKING
- TWO ACRES
- TRIPLE AND DOUBLE-GLAZED
- BREATHTAKING VIEWS

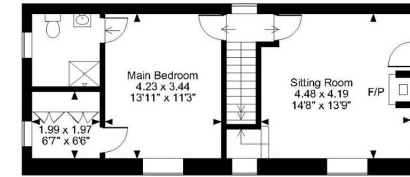




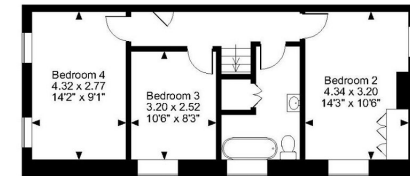
Midgrove Lane, Delph, Oldham
 Approximate Gross Internal Area
 1496 Sq Ft/139 Sq M



Ground Floor



First Floor

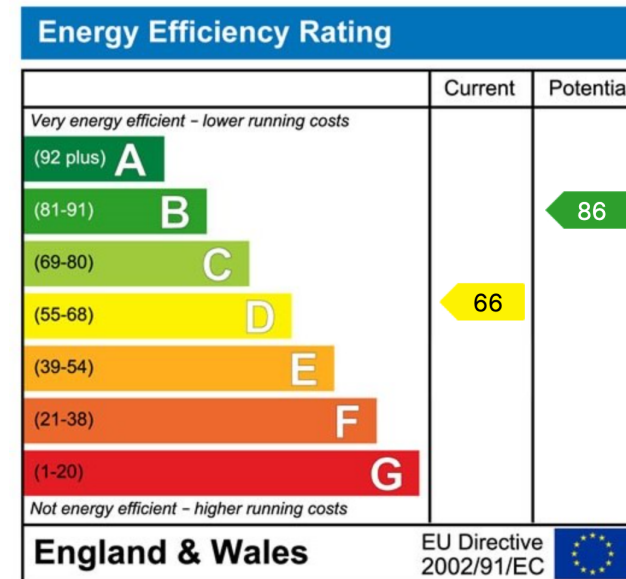


Second Floor

FOR ILLUSTRATIVE PURPOSES ONLY - NOT TO SCALE
 The position & size of doors, windows, appliances and other features are approximate only.
 © ehouse. Unauthorised reproduction prohibited. Drawing ref. dig/6589159/MRB

FINE COUNTRY

Blending harmoniously into the natural surroundings, a charming home displaying a unique combination of spacious living accommodation, a versatile layout, and an ideal location for families. Enjoying two acre grounds, a stunning outlook and a sympathetically modernised interior.



House 42, Locke, 44 Shambles St,
 Barnsley S70 2SH
 Tel: +44 (0)01226 729009
 barnsley@fineandcountry.com

Unit 2 Former Council Offices, Eastgate
 Honley, Holmfirth HD9 6PA
 Tel: +44 (0)1484 550620
 huddersfield@fineandcountry.com

The Balance Floor 7, 2 Pinfold Street
 Sheffield, South Yorkshire S1 2GU
 Tel: +44 (0)114 404 0044
 sheffield@fineandcountry.com