



Howarth View
33 Barnsley Road | Upper Cumberworth | Huddersfield | HD8 8NR

FINE & COUNTRY

HOWARTH VIEW



Set within grounds approaching 1/3 of an acre, commanding breathtaking cross valley views, a stunning, individually designed modern home which offers spacious versatile living accommodation and a highly sought after semi rural village location.



The property enjoys a spacious living kitchen which opens onto a terraced balcony overlooking adjoining countryside whilst a lounge to the first floor has windows to three aspects ensuring excellent levels of natural light whilst all elevations capture breathtaking views. All four bedrooms offer double proportions and en-suite facilities whilst the lower ground floor presents a versatile layout lending itself to numerous uses including a bedroom suite, home business suite or leisure / cinema room.

Located on the outskirts of open countryside resulting in the most idyllic of outdoors lifestyles, whilst local services are easily accessed in the neighboring areas of Denby Dale and Holmfirth, both train and bus services are easily accessed and the M1 motorway can be reached within a short drive. An internal inspection is recommended in order to fully appreciate both the size and standard of accommodation on offer.





KEY FEATURES

Ground Floor

A contemporary styled entrance door sits central to full height windows opening into the reception porch which has a glass lantern to the ceiling and twin glazed doors with windows on either side leading through to the reception hall. The hallway presents an impressive introduction to the property offering a glimpse through the kitchen over a panoramic rural backdrop. There is a centrally positioned bespoke oak staircase and high quality tiling to the floor. A cloaks room is presented with a modern two piece suite.

The living kitchen most definitely forms the heart of the home, enjoys expansive proportions with windows to three aspects, all enjoying stunning views whilst bi-folding doors open onto a balcony with a glass surround ensuring excellent levels of natural light whilst inviting the outdoors inside and commanding stunning cross valley views. The kitchen area is presented with bespoke furniture complimented by work surfaces with an inset sink unit and a compliment of Neff appliances including twin ovens, a microwave convection oven, a wine chiller, dishwasher, and a hot kettle tap. A central island comfortably seats six and has a quartz surface over with an inset halogen hob and extraction unit over. The balcony acts as an outdoors extension to the room, is ideal for 'al fresco dining' the views ensuring a most enviable position to sit and enjoy the breathtaking outlook.

There are two similar sized double bedrooms to the front aspect of the property each enjoying a double aspect position and both benefitting from en-suite shower rooms presented with high quality furniture.









KEY FEATURES

First Floor

A central landing opens to the lounge and is separated by an oak framed full height window which ensures excellent levels of natural light flows through the floor. A stunning room with windows to three aspects commanding breathtaking panoramic views extending from Home Moss past Castle Hill and Emley Moor and over towards Howarth and York. There is a wood burning stove which sits on a granite hearth and tremendous levels of natural light being drawn indoors.

The principal bedroom suite enjoys a double aspect position to the front of the house with windows to two elevations, built in wardrobes and a generous en suite bathroom which is presented with a modern four piece suite. The fourth double bedroom enjoys a double aspect position and has en-suite facilities presented with a three piece suite.











KEY FEATURES

Lower Ground Floor

The lower ground floor can be accessed from the main reception hall or alternatively has its own reception access from the rear courtyard by a stable style external door. A resulting versatile floor which would make an ideal teenage suite, granny annex or a self contained home business suite. The reception initially opens to a boot room with a sink. An inner hallway gains access to a shower room presenting a modern three-piece suite including a shower, a vanity unit incorporating a low flush W.C and a wash hand basin, with tiling to the walls and floor and a heated chrome towel radiator. A utility is home to both the oil-fired boiler and pressurized cylinder tank and has plumbing for an automatic washing machine.

A versatile room currently offers exceptional proportions and would make an ideal games room / cinema room or additional bedroom suite and has Bi-folding doors opening to the rear grounds.











KEY FEATURES

Externally

The property sits privately within grounds approaching 1/3 of an acre, stone pillared gate posts housing electronically operated wrought iron gates which open to the driveway that extends to the rear of the property offering parking for several vehicles. There is an oversized single garage with power, lighting and an electronically operated door. To the rear of the garage is a privately enclosed seating area with a decked seating area and a summer house. At the side of the house the garden is laid to lawn and to the far rear aspect of the plot a lawned area adjoins a decked terrace with a second summer house taking full advantage of the views and accesses a detached summer house.







LOCAL AREA

Upper Cumberworth

A charming village located to the southeast of Huddersfield, northwest of Barnsley, between the villages of Shepley and Denby Dale surrounded by glorious un-spoilt countryside resulting in some glorious scenic walks. Locally there are quaint village pub's including The Woodman at Thunderbridge, The Star which is within immediate walking distance, The Sovereign, The Dunkirk and The 3 Acres at Emley. Local services are in abundance in the neighbouring villages of Denby Dale, Kirkburton and Scissett, ranging from small gift and clothes shops to smaller supermarkets and a swimming pool. Highly regarded private and state schools are easily accessible.

Nearby attractions include Cannon Hall at Cawthorne with the popular Farm shop and Yorkshire Sculpture Park at West Bretton. Woodsome Golf Club is within a 10 minute drive; Shelley has a substantial Garden Centre with restaurant whilst both Huddersfield and Holmfirth are accessible within a 15 minute drive. Commutability throughout the region is excellent with major commercial centres being easily accessible whilst the M1 motorway is within a 10 minute drive. Bus and Train services are available in within the village.

Huddersfield 4.5 miles
Holmfirth 8 miles
Leeds 20 miles
Manchester 33 Miles
Sheffield 23 Miles
Wakefield 10 miles



INFORMATION

Directions

From the centre of Denby Dale head towards Huddersfield on Wakefield Road which becomes Barnsley Road. On entering Upper Cumberworth directly after Rowgate the property is on the right hand side.

Additional Information

A Freehold property with mains electricity, drainage and water. Oil fired central heating. Under floor heating to the ground and lower ground floor.

EPC Rating - B.

Council Tax Band - G.



Barnsley Road, Upper Cumberworth, Huddersfield

Approximate Gross Internal Area

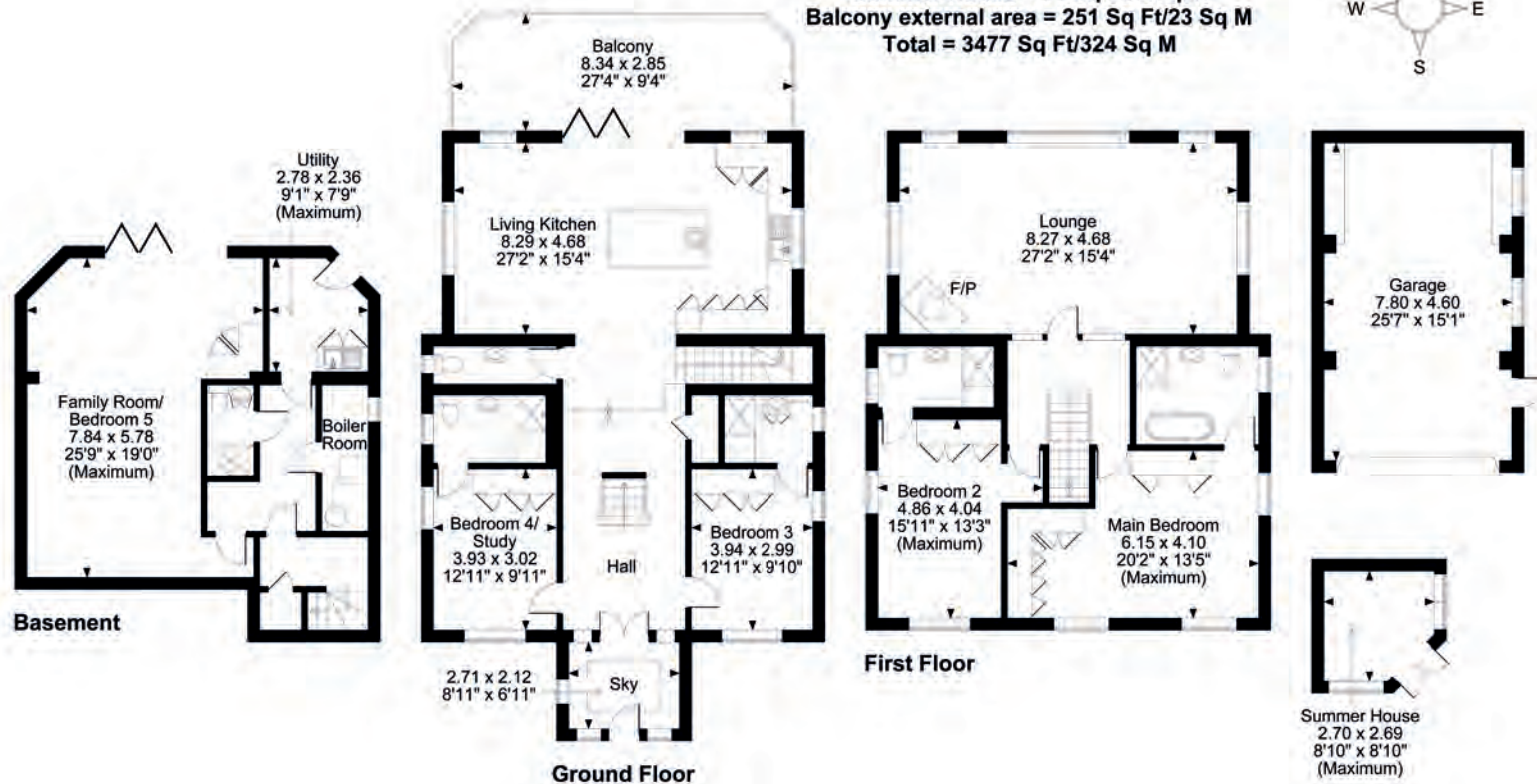
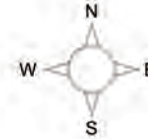
Main House = 3020 Sq Ft/281 Sq M

Garage = 386 Sq Ft/36 Sq M

Summer House = 71 Sq Ft/7 Sq M

Balcony external area = 251 Sq Ft/23 Sq M

Total = 3477 Sq Ft/324 Sq M



FOR ILLUSTRATIVE PURPOSES ONLY - NOT TO SCALE
 The position & size of doors, windows, appliances and other features are approximate only.
 © ehouse. Unauthorised reproduction prohibited. Drawing ref. dig/8587097/SMA

Score	Energy rating	Current	Potential
92+	A		
81-91	B	85 B	90 B
69-80	C		
55-68	D		
39-54	E		
21-38	F		
1-20	G		



Agents notes: All measurements are approximate and for general guidance only and whilst every attempt has been made to ensure accuracy, they must not be relied on. The fixtures, fittings and appliances referred to have not been tested and therefore no guarantee can be given that they are in working order. Internal photographs are reproduced for general information and it must not be inferred that any item shown is included with the property. For a free valuation, contact the numbers listed on the brochure. Printed 08.03.2024





FINE & COUNTRY

Fine & Country is a global network of estate agencies specialising in the marketing, sale and rental of luxury residential property. With offices in over 300 locations, spanning Europe, Australia, Africa and Asia, we combine widespread exposure of the international marketplace with the local expertise and knowledge of carefully selected independent property professionals.

Fine & Country appreciates the most exclusive properties require a more compelling, sophisticated and intelligent presentation – leading to a common, yet uniquely exercised and successful strategy emphasising the lifestyle qualities of the property.

This unique approach to luxury homes marketing delivers high quality, intelligent and creative concepts for property promotion combined with the latest technology and marketing techniques.

We understand moving home is one of the most important decisions you make; your home is both a financial and emotional investment. With Fine & Country you benefit from the local knowledge, experience, expertise and contacts of a well trained, educated and courteous team of professionals, working to make the sale or purchase of your property as stress free as possible.

We value the little things that make a home

THE FINE & COUNTRY
FOUNDATION

The production of these particulars has generated a £10 donation to the Fine & Country Foundation, charity no. 1160989, striving to relieve homelessness.

Visit fineandcountry.com/uk/foundation

follow Fine & Country on



Fine & Country
Unit 2 The Old Council Offices, Eastgate, Honley, Holmfirth, HD9 6PA
01484 550620 | huddersfield@fineandcountry.com

