

Whitefields Drive Richmond DL10 7DQ Price £270,000



CARVER
RESIDENTIAL
Sales · Lettings · Property Management

20 Whitefields, Richmond, North Yorkshire, is a beautifully extended family home situated in a sought-after location, within walking distance to two primary schools as well as St. Francis Xavier School and Richmond School, this home is ideal for families seeking excellent education options.

Spacious and well-presented, the property has been thoughtfully extended to the side and rear, offering a wealth of living space perfect for family life.

The ground floor boasts a good-sized lounge/diner, with double doors opening into a bright garden room, ideal for relaxing or entertaining. The extended kitchen is well-equipped and leads to the integral garage and utility room with plumbing for white goods and housing the boiler.

The first floor features three generously sized double bedrooms, one of which features a fully tiled en suite shower room and “walk in wardrobe, a fully tiled family bathroom services the other two bedrooms.

Externally the property has a block paved driveway which can accommodate two cars and provides access to the garage, to the rear you will find a low-maintenance rear garden, paved with stunning Indian sandstone and featuring attractive planting areas, offering the perfect space for outdoor enjoyment.







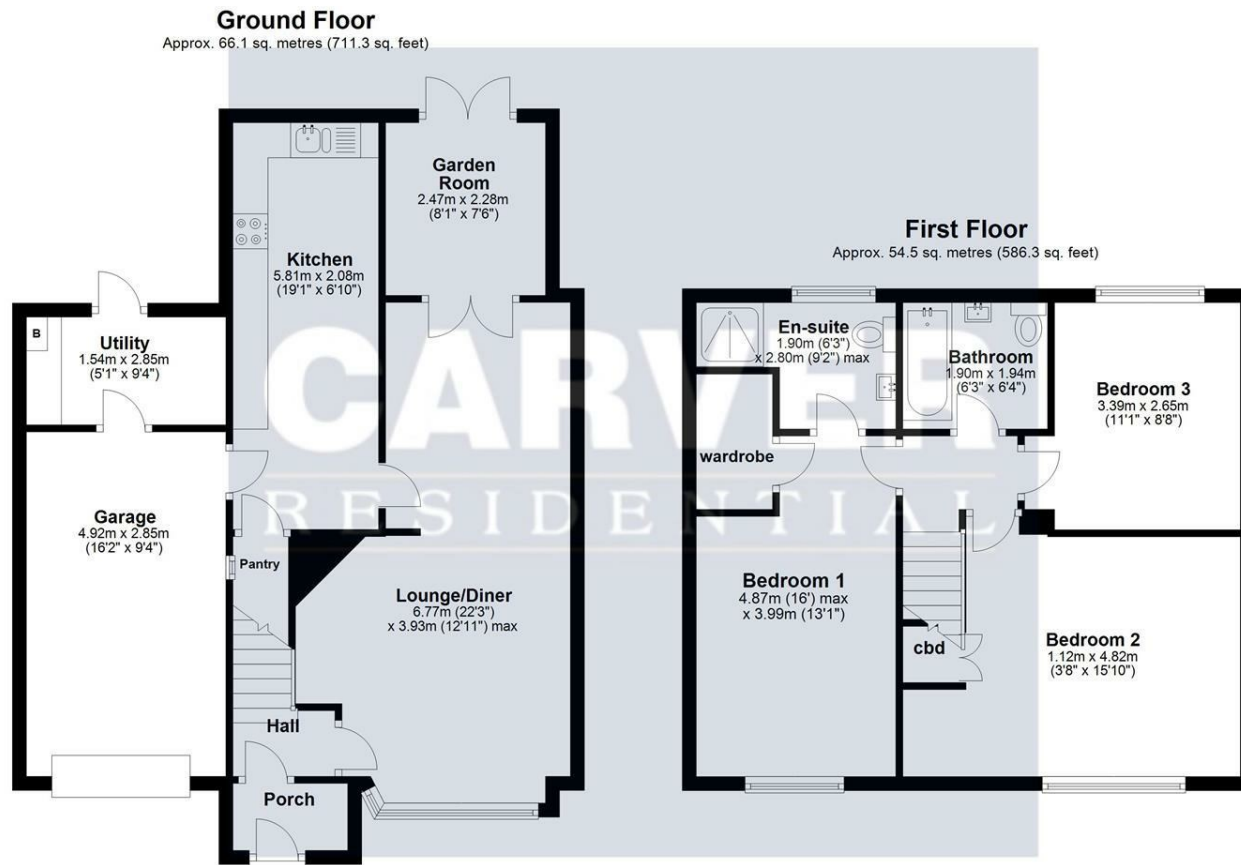
- Extended to the side and rear
- Walking distance to good schools
 - Three double bedrooms
 - En suite shower room
 - Double driveway
 - Large Floorplan





CARVER
RESIDENTIAL
Sales · Lettings · Property Management





Total area: approx. 120.6 sq. metres (1297.7 sq. feet)

Sketch Plan: Not To Scale. For Illustrative Purposes Only. Created by HJ Cadplan Ltd. Plan produced using PlanUp.

Energy Efficiency Rating		Current	Potential
Very energy efficient - lower running costs			
(92 plus) A			
(81-91) B			
(69-80) C		73	83
(55-68) D			
(39-54) E			
(21-38) F			
(1-20) G			
Not energy efficient - higher running costs			
England & Wales		EU Directive 2002/91/EC	

We can search 1,000s of mortgages for you

It could take just 15 minutes with one of our specialist advisers:
Call: 01325 380088. Visit: Any of our Offices. Online: www.mortgageadvicebureau.com/carver



Your home may be repossessed if you do not keep up repayments on your mortgage. There will be a fee for mortgage advice. The actual amount you pay will depend upon your circumstances. The fee is up to 1% but a typical fee is 0.3% of the amount borrowed

MAB 6202



These particulars do not constitute any part of an offer or contract. None of the statements contained in these particulars are to be relied on as statements or representations of fact and any intending purchaser must satisfy himself by inspection or otherwise to the correctness of each of the statements contained in these particulars. The vendor does not make or give, and neither Nick & Gordon Carver Residential or Commercial, Nick & Gordon Carver, nor any person in their employment has any authority to make or give any representation or warranty whatever in relation to this property

80 High Street
Yarm, TS15 9AH
Tel: 01642 420090
yarm@carvergroup.co.uk

14 Duke Street, Darlington
County Durham, DL3 7AA
Tel: 01325 357807
sales@carvergroup.co.uk

26 Market Place, Richmond
North Yorkshire, DL10 4QG
Tel: 01748 825317
richmond@carvergroup.co.uk

43 Dalton Way, Newton Aycliffe
County Durham, DL5 4DJ
Tel: 01325 320676
aycliffe@carvergroup.co.uk

219 High Street, Northallerton
North Yorkshire, DL7 8LW
Tel: 01609 777710
northallerton@carvergroup.co.uk