



*North Barn Eppleby, Richmond, DL11 7AR*  
*Price £650,000*

**CARVER**  
RESIDENTIAL  
Sales · Lettings · Property Management

Nestled in the idyllic village of Eppleby, North Barn is a stunning character property that seamlessly blends rustic charm with modern comforts. This beautiful home features beamed vaulted ceilings, oak floors, and bespoke touches throughout, offering a tranquil rural retreat. The dual-aspect lounge is a cosy centrepiece, boasting a striking stone fireplace, log burner, and arched doorway leading out to a lovely patio, perfect for unwinding in any season.

The kitchen is a chef's delight, complete with granite work surfaces, a Rangemaster cooker, a wine cooler, and classic sash windows, while the adjacent utility room offers further convenience with its Belfast sink, oak work surfaces, and ample space for white goods whilst a spacious dining room provides the ideal spot for entertaining, with stairs leading to the first-floor accommodations.

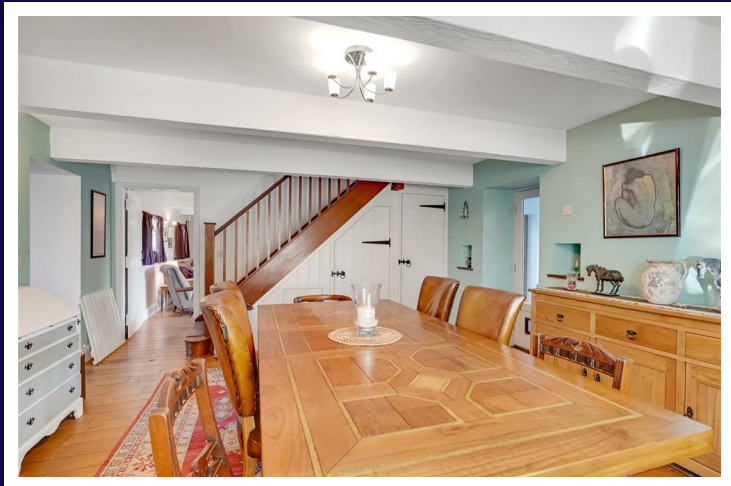
Upstairs, you'll find two generously sized double bedrooms, including a premier bedroom with a private en suite, as well as a charming single bedroom and a luxurious family bathroom with a sumptuous bath, perfect for relaxing after a long day.

The property offers two gated entrances: one leading to the front patio and parking area, and the other guiding you along the side driveway to the extensive grounds. These include well-maintained gardens, paddocks, stables, and a workshop/studio space that is fully insulated and equipped with power, making it ripe for conversion (subject to planning permissions).

To the rear, a picturesque cottage-style garden awaits, complete with mature fruit trees, shrubs, and a manicured lawn. The patio, some of which is covered, provides access to both the rear porch and the lounge. Further down, you'll discover a vegetable garden with more fruit trees, raised beds, and a charming hen house with a generous run.



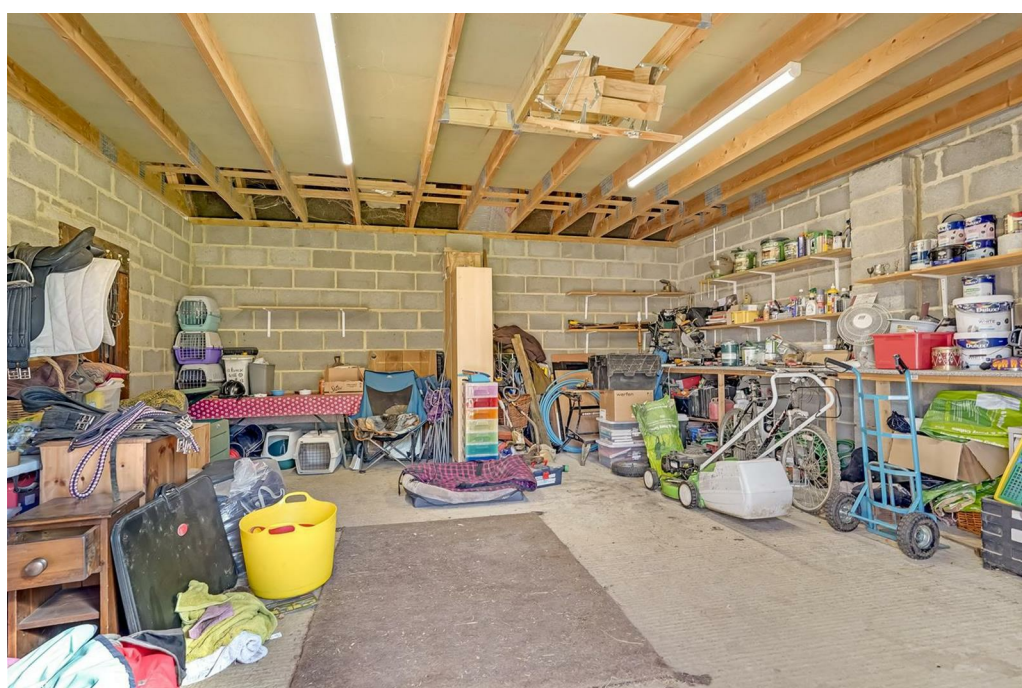
















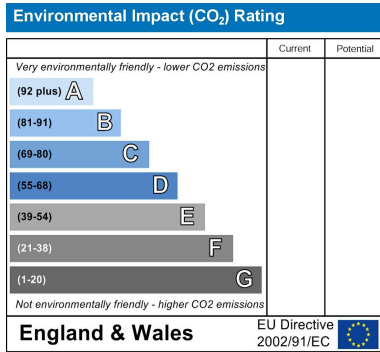
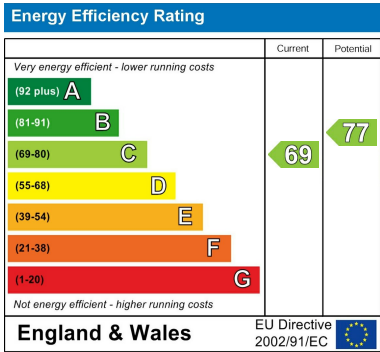
With its blend of traditional features and thoughtful modern amenities, North Barn offers a rare opportunity to own a beautifully restored rural property, complete with stables, paddock, and workshop space—ideal for equestrian enthusiasts or those seeking a peaceful countryside lifestyle.

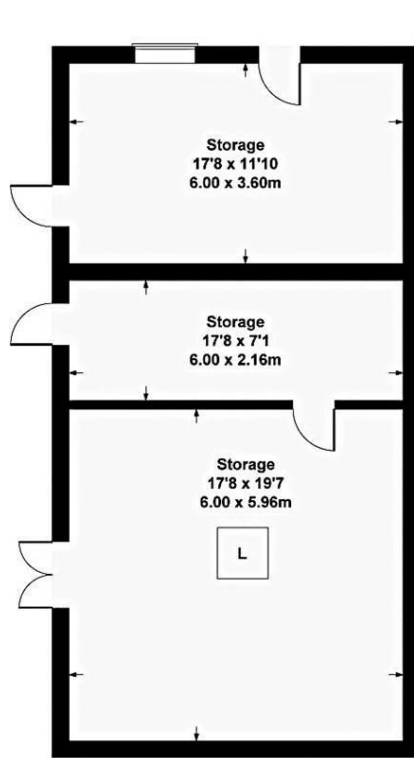
Located in the picturesque Richmondshire district of North Yorkshire, Eppleby is a charming village surrounded by rolling countryside and rural beauty. The village offers a peaceful community feel, with its quaint cottages, historic buildings, and a traditional village green.

Conveniently positioned for easy access to nearby market towns such as Richmond and Darlington, offering a range of local amenities including shops, pubs, restaurants, and excellent schools. The village itself enjoys a primary school and a well-loved local pub, and village cafe making it perfect for families and those seeking a quieter pace of life.

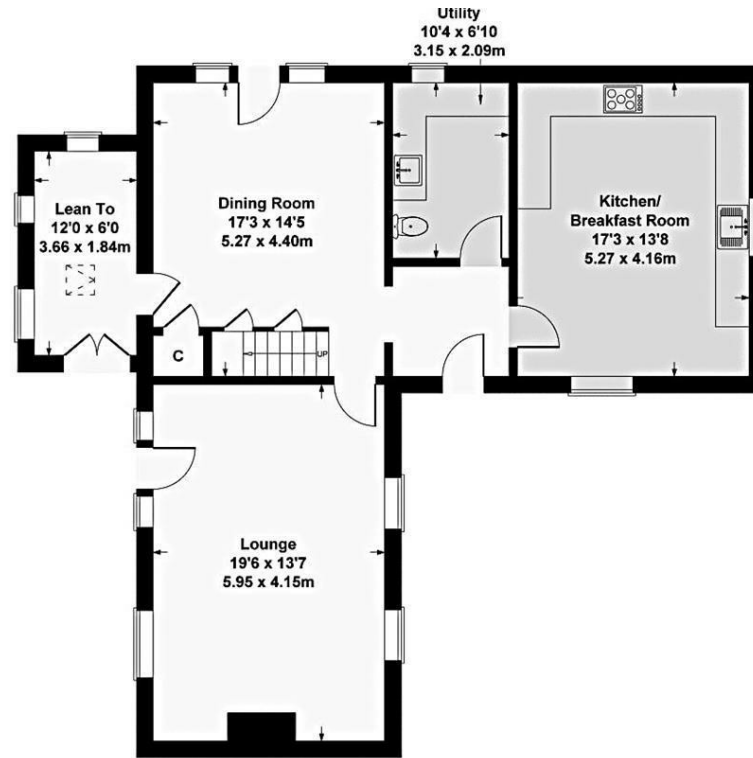
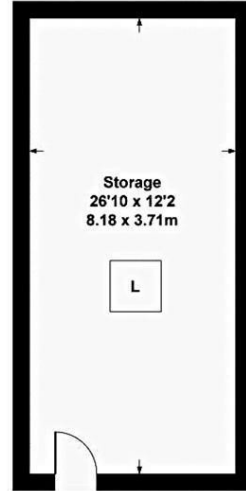
For outdoor enthusiasts, Eppleby offers an abundance of scenic walking and cycling routes, as well as easy access to the stunning landscapes of the Yorkshire Dales and the North Pennines. The area is rich in history, with nearby Richmond Castle and Easby Abbey providing cultural landmarks to explore.

With its blend of countryside serenity and proximity to essential amenities, Eppleby offers the perfect balance for those seeking rural living without sacrificing convenience

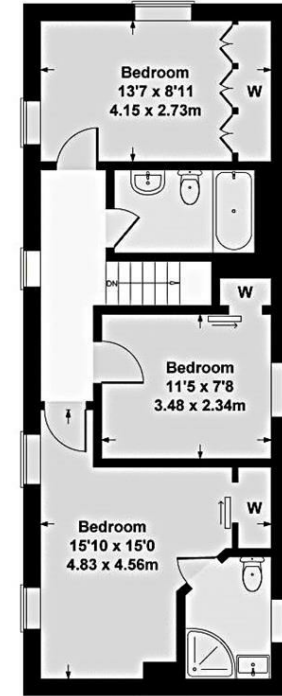




OUTBUILDINGS



GROUND FLOOR



FIRST FLOOR

North Barn, Eppleby, DL11 7AR

naea  
propertymark

PROTECTED

The Property  
Ombudsman

**CARVER**  
RESIDENTIAL  
Sales · Lettings · Property Management

41 Market Place  
Richmond  
North Yorkshire  
DL10 4QL

01748 825317 richmond@carvergroup.co.uk