

Ladywell Court Melsonby Richmond DL10 5QN Price £300,000



CARVER
RESIDENTIAL
Sales · Lettings · Property Management

Ladywell Court is a welcoming modern terraced cottage located in the charming village of Melsonby. This well presented three-bedroom home combines contemporary living with the enchanting character of a traditional cottage. The property features a Spacious Lounge Diner at the heart of the home featuring an inviting open fire that creates a warm and cozy atmosphere, ideal for relaxing and entertaining whilst the sleek and stylish kitchen is designed with modern living in mind, offering ample counter space and high-quality appliances for all your culinary needs, a practical downstairs W/C adds a touch of convenience for guests and daily living and Double Glazed Sash Windows throughout the property ensure excellent insulation and energy efficiency while maintaining the cottage's timeless appeal.

To the first floor you will find three well-proportioned bedrooms, modern Family Bathroom and En-Suite Shower Room.

Externally, pretty cottage gardens to the front offer a peaceful outdoor retreat to enjoy nature, entertain, or simply unwind, whilst to the rear there is a delightful, private rear courtyard with a distinctively Mediterranean feel which provides access to the detached garage and driveway.

Melsonby is known for its historic charm, and friendly community conveniently located for commuters and families alike. The village has a well-regarded primary school, Melsonby Methodist Primary School, which is known for its small class sizes and personalized attention. The school emphasizes a nurturing environment, encouraging both academic and personal growth. For secondary education, students typically attend Richmond School, located just a short drive away with a strong reputation for academic excellence, diverse extracurricular activities, and robust support systems. Melsonby's location is ideal for those seeking a peaceful village life with easy access to larger towns and cities. The village is just a few miles from the A1(M), providing excellent road connections.





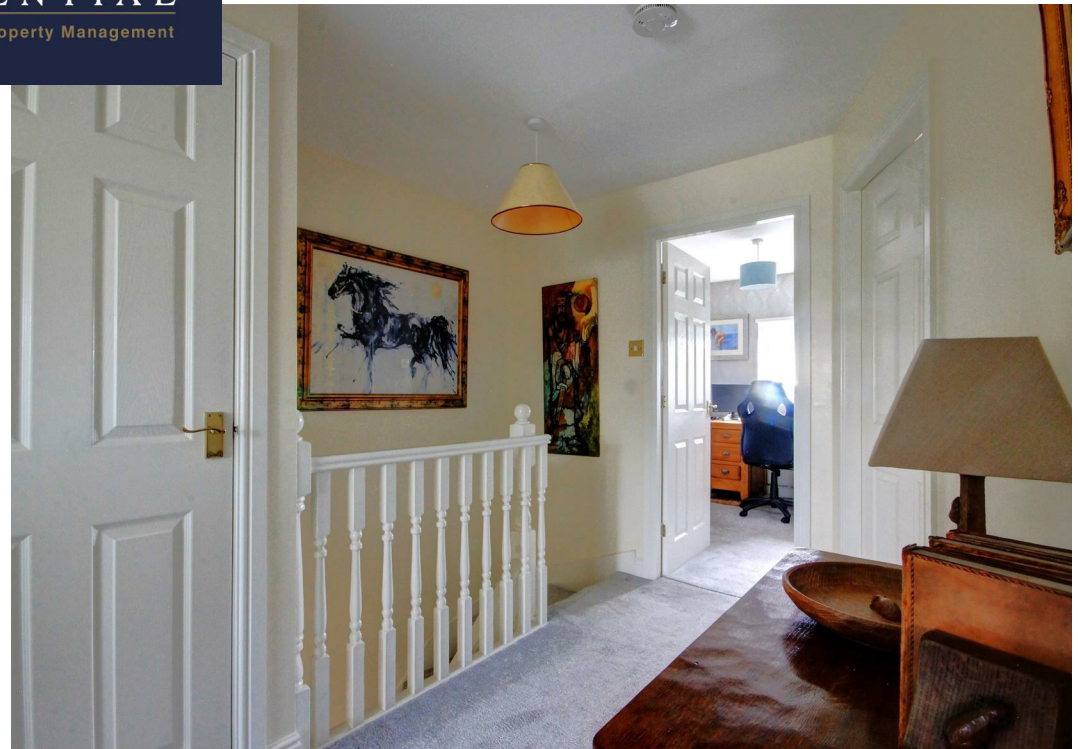
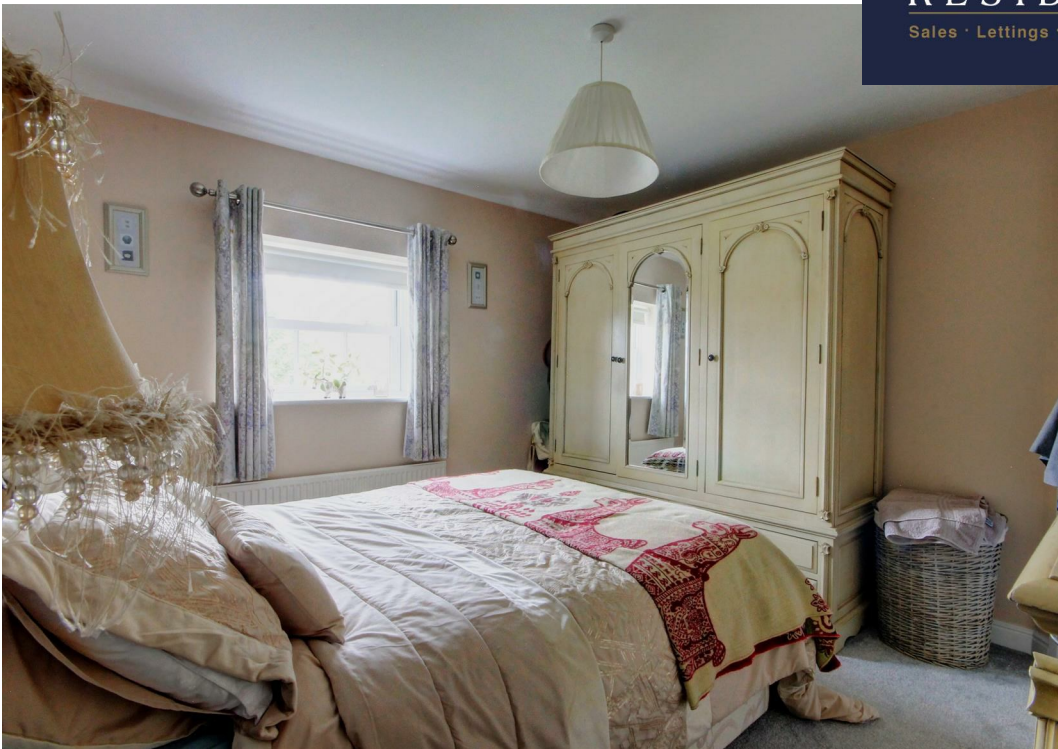


- Garage & parking
- Gardens Front & Rear
- Spacious Lounge Diner
 - Open Fireplace
- Double Glazed Sash Windows
- Bedroom with en-suite
- Motivated seller
- Epc ordered



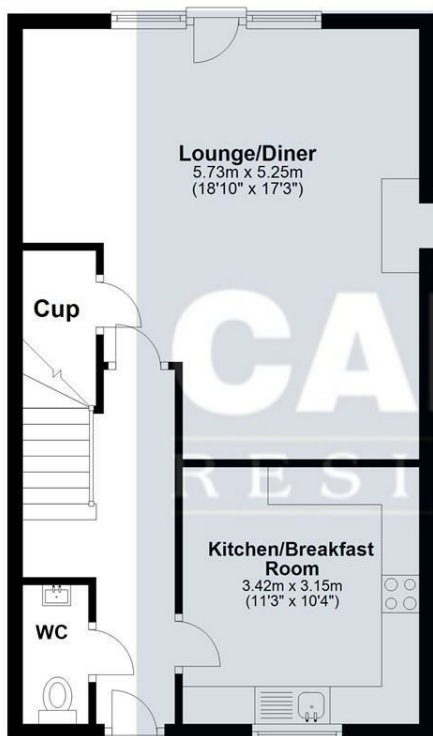


CARVER
RESIDENTIAL
Sales · Lettings · Property Management



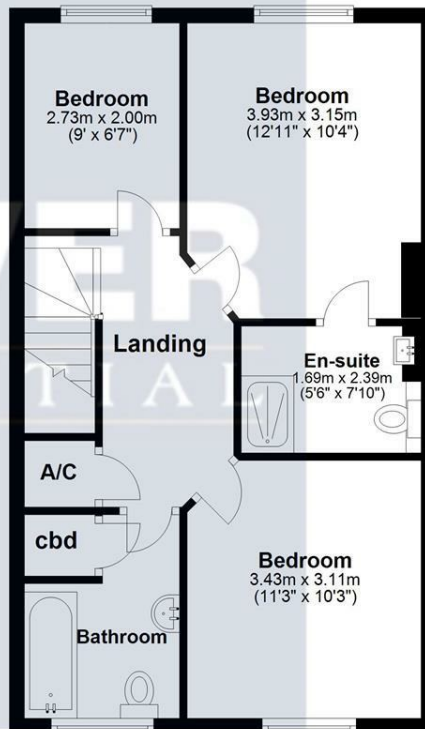
Ground Floor

Approx. 48.7 sq. metres (523.7 sq. feet)



First Floor

Approx. 48.6 sq. metres (523.5 sq. feet)



Total area: approx. 97.3 sq. metres (1047.3 sq. feet)

Sketch Plan: Not To Scale, For Illustrative Purposes Only. Created by HJ Cadplan Ltd.
Plan produced using PlanUp.

Energy Efficiency Rating		
	Current	Potential
Very energy efficient - lower running costs		
(92 plus) A		
(81-91) B		83
(69-80) C	66	
(55-68) D		
(39-54) E		
(21-38) F		
(1-20) G		
Not energy efficient - higher running costs		
England & Wales	EU Directive 2002/91/EC	

We can search 1,000s of mortgages for you

It could take just 15 minutes with one of our specialist advisers:
Call: 01325 380088. Visit: Any of our Offices. Online: www.mortgageadvicebureau.com/carver



Your home may be repossessed if you do not keep up repayments on your mortgage.
There will be a fee for mortgage advice. The actual amount you pay will depend upon your circumstances.
The fee is up to 1% but a typical fee is 0.3% of the amount borrowed

MAB 6202



These particulars do not constitute any part of an offer or contract. None of the statements contained in these particulars are to be relied on as statements or representations of fact and any intending purchaser must satisfy himself by inspection or otherwise to the correctness of each of the statements contained in these particulars. The vendor does not make or give, and neither Nick & Gordon Carver Residential or Commercial, Nick & Gordon Carver, nor any person in their employment has any authority to make or give any representation or warranty whatever in relation to this property

80 High Street
Yarm, TS15 9AH
Tel: 01642 420090
yarm@carvergroup.co.uk

14 Duke Street, Darlington
County Durham, DL3 7AA
Tel: 01325 357807
sales@carvergroup.co.uk

26 Market Place, Richmond
North Yorkshire, DL10 4QG
Tel: 01748 825317
richmond@carvergroup.co.uk

43 Dalton Way, Newton Aycliffe
County Durham, DL5 4DJ
Tel: 01325 320676
aycliffe@carvergroup.co.uk

219 High Street, Northallerton
North Yorkshire, DL7 8LW
Tel: 01609 777710
northallerton@carvergroup.co.uk