



country properties  
village properties  
town homes  
barn conversions  
building plots

**Bloomesley Close**  
Newton Aycliffe, DL5 4XQ

**Offers in the region of £340,000**

**NICK & GORDON**  
**CARVER**  
RESIDENTIAL

Occupying a lovely CORNER PLOT this DETACHED family home features a GROUND FLOOR STUDY, DUAL ASPECT LOUNGE, fitted kitchen with utility room and WALK-IN DRESSING ROOM WITH EN-SUITE SHOWER ROOM/WC to the principal bedroom. Externally there are attractive enclosed landscaped gardens with a DETACHED DOUBLE GARAGE.





### **Agents Notes**

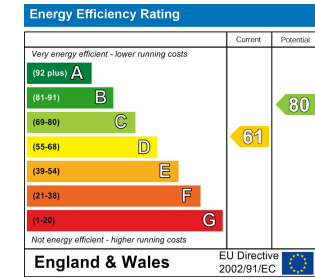
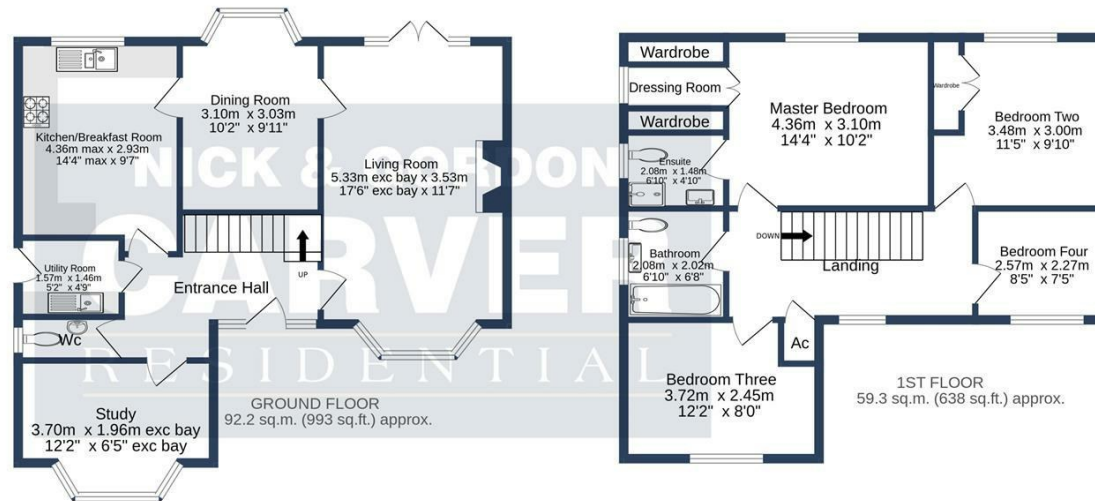
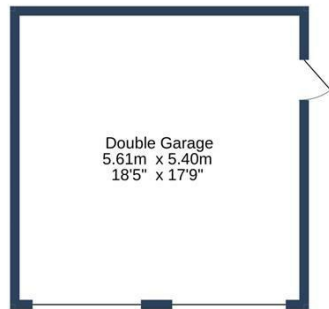
Tenure:- Freehold

Mains gas, (central heating to radiators), electricity & drainage

uPVC double glazing throughout

Council Tax:- Band E

Local Authority:- Durham County Council



BLOOMESLEY CLOSE, NEWTON AYCLIFFE. DL5 4XQ.  
 TOTAL FLOOR AREA : 151.5 sq.m. (1631 sq.ft.) approx.

Whilst every attempt has been made to ensure the accuracy of the floorplan contained here, measurements of doors, windows, rooms and any other items are approximate and no responsibility is taken for any error, omission or mis-statement. This plan is for illustrative purposes only and should be used as such by any prospective purchaser. The services, systems and appliances shown have not been tested and no guarantee as to their operability or efficiency can be given.  
 Made with Metropix ©2022

**We can search 1,000s of mortgages for you**

It could take just 15 minutes with one of our specialist advisers:  
 Call: 01325 380088. Visit: Any of our Offices. Online: [www.mortgageadvicebureau.com/carver](http://www.mortgageadvicebureau.com/carver)



Your home may be repossessed if you do not keep up repayments on your mortgage. There will be a fee for mortgage advice. The actual amount you pay will depend upon your circumstances. The fee is up to 1% but a typical fee is 0.3% of the amount borrowed

MAB 6202



These particulars do not constitute any part of an offer or contract. None of the statements contained in these particulars are to be relied on as statements or representations of fact and any intending purchaser must satisfy himself by inspection or otherwise to the correctness of each of the statements contained in these particulars. The vendor does not make or give, and neither Nick & Gordon Carver Residential or Commercial, Nick & Gordon Carver, nor any person in their employment has any authority to make or give any representation or warranty whatever in relation to this property



14 Duke Street, Darlington  
 County Durham, DL3 7AA  
 Tel: 01325 357807  
[sales@carvergroup.co.uk](mailto:sales@carvergroup.co.uk)

26 Market Place, Richmond  
 North Yorkshire, DL10 4QG  
 Tel: 01748 825317  
[richmond@carvergroup.co.uk](mailto:richmond@carvergroup.co.uk)

43 Dalton Way, Newton Aycliffe  
 County Durham, DL5 4DJ  
 Tel: 01325 320676  
[aycliffe@carvergroup.co.uk](mailto:aycliffe@carvergroup.co.uk)

219 High Street, Northallerton  
 North Yorkshire, DL7 8LW  
 Tel: 01609 777710  
[northallerton@carvergroup.co.uk](mailto:northallerton@carvergroup.co.uk)