

CLARKE | MUNRO

ESTATE AGENTS

9 Kenton Close, Hartburn, TS18 5EX



Price: £350,000



01642 **361 111**
visit clarkemunro.com for details

9 Kenton Close, Hartburn, TS18 5EX



Key Features:

- NO ONWARD CHAIN
- CONSERVATORY
- SOUGHT AFTER CUL DE SAC LOCATION
- FOUR BEDROOMS
- NEWLY FITTED BATHROOM
- WRAP AROUND GARDENS



Property Description:

Clarke Munro are excited to bring to the market this fantastic Dorma bungalow in the desirable Hartburn area of Stockton on Tees. Providing you with versatile living accommodation and lying within this lovely sought after cul de sac. Available with no onward chain, the spacious accommodation comprises of Entrance porch leading into very spacious hallway with doors leading to the following on the ground floor; dual aspect lounge through to dining room, generous kitchen with a range of matching shaker style wall and base units with integrated some appliances and entrance to your rear conservatory. Two of the bedrooms (master with fitted robes) are on ground floor level along with your newly fitted bathroom. Stairs lead to the first floor with a further two double bedrooms one with an en suite wc. To the rear elevation is a driveway leading to your single brick built detached garage with remote controlled up and over door. An early viewing is a must as we anticipate a high level of interest.



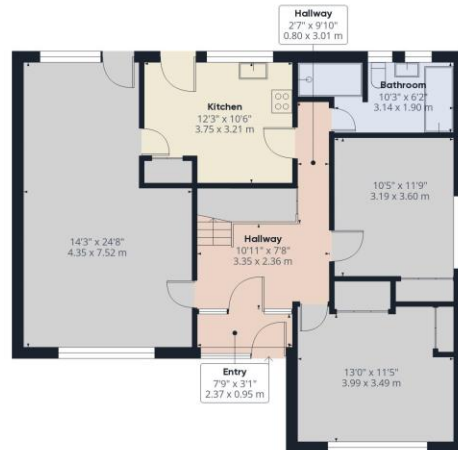
9 Kenton Close, Hartburn, TS18 5EX

TO VIEW: Tel: **01642 36111**

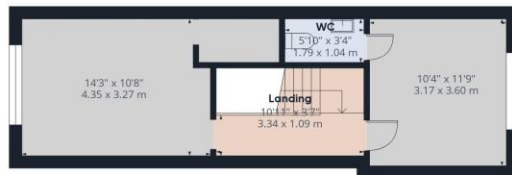
65 Queensway, Stockton-On-Tees, Billingham, TS23 2LU.

www.clarkemunro.com

CLARKE | MUNRO
ESTATE AGENTS



Ground Floor



Floor 1

Approximate total area⁽¹⁾
1331.62 ft²
123.71 m²

(1) Excluding balconies and terraces

While every attempt has been made to ensure accuracy, all measurements are approximate, not to scale. This floor plan is for illustrative purposes only.

Calculations are based on RICS IPMS 3C standard.

GIRAFFE360

Energy performance certificate (EPC)



Energy Performance Certificate

The energy efficiency rating is a measure of the overall efficiency of a home. The higher the rating the more energy efficient the home is and the lower the fuel bills will be.

Our Services:

- Free, no obligation sales valuations
- With 200 combined years of knowledge under one roof
- Expert negotiators sourcing the best buyers
- State of the Art Virtual walk-throughs and floor plans on every property
- Beautifully shot photography
- Accompanied viewings
- Late night appointments
- Dedicated Sale progressor
- Switched on marketing and a brand that Teessiders love & trust.



These particulars do not constitute, nor constitute part of, an offer or contract. All statements contained in these particulars as to this property are made without responsibility on the part of Clark Munro or the vendor. None of these statements contained in these particulars as to this property are to be relied on statements of representations or fact. An intending purchaser must satisfy himself by inspection or otherwise as to the correctness of each of the statements contained in these particulars. The vendor does not make or give, and neither Clark Munro, nor any person in their employment has any authority to make or give any representation or warranty whatever in relation to this property. All measurements are approximate.

9 Kenton Close, Hartburn, TS18 5EX



01642 361 111
visit clarkemunro.com for details