

# EGERTON ESTATES



16 Awelfryn

, Amlwch, LL68 9DG

Offers In The Region Of £235,000



# 16 Awelfryn, Amlwch, LL68 9DG

Welcome to this charming property located in the picturesque village of Amlwch. This delightful house boasts 2 reception rooms, providing ample space for entertaining guests or simply relaxing with your loved ones. With 3 cosy bedrooms, there's plenty of room for the whole family to unwind and make this house a home.

Built in the late 1970s, this property offers modern conveniences for comfortable living. The bathroom provides a tranquil space to rejuvenate after a long day.

One of the standout features of this property is the parking space available for 2 vehicles, ensuring you never have to worry about finding a spot for your cars.

Located in a lovely neighbourhood, this house offers a peaceful retreat from the hustle and bustle of everyday life. Whether you're looking to settle down or seeking a weekend getaway, this property in Awelfryn, Amlwch, is sure to impress. Don't miss out on the opportunity to make this house your own and create lasting memories in this beautiful setting.



## Vestibule Porch

## Hallway

## Living Room

13'2" x 13'1" (4.02 x 4.00)

## Dining Room

12'0" x 11'11" (3.67 x 3.64)

## Kitchen

12'1" x 9'3" (3.70 x 2.84)

## First Floor Landing

## Bedroom 1

13'3" x 12'0" (4.06 x 3.67)

## Bedroom 2

12'3" x 12'0" (3.75 x 3.67)

## Bedroom 3

6'10" x 6'8" (2.10 x 2.04)

## Bathroom

8'9" x 5'9" (2.67 x 1.76)

## Outside

## Services

## Tenure

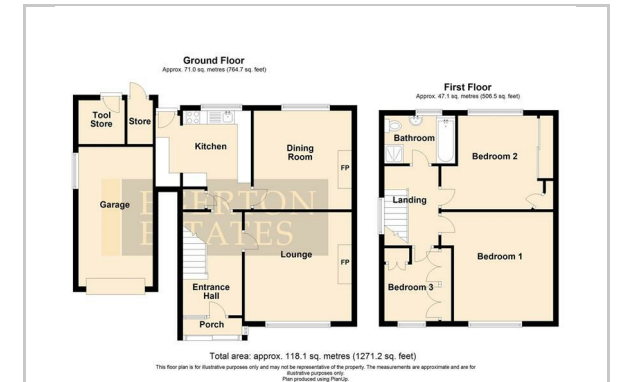
## Council Tax

## Energy Efficiency

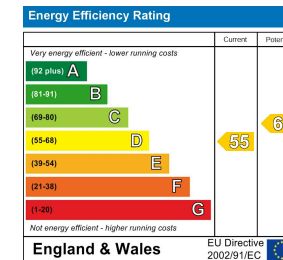
## Area Map



## Floor Plan



## Energy Efficiency Graph



These particulars, whilst believed to be accurate are set out as a general outline only for guidance and do not constitute any part of an offer or contract. Intending purchasers should not rely on them as statements of representation of fact, but must satisfy themselves by inspection or otherwise as to their accuracy. No person in this firm's employment has the authority to make or give any representation or warranty in respect of the property.

The Property Centre, Padworth House, Benllech, Anglesey, LL74 8TF

Tel: 01248 852177 Email: [enquiries@egerton-estates.co.uk](mailto:enquiries@egerton-estates.co.uk) <https://www.egerton-estates.co.uk>