



216 The Heart, Walton on Thames, Surrey, KT12 1GB



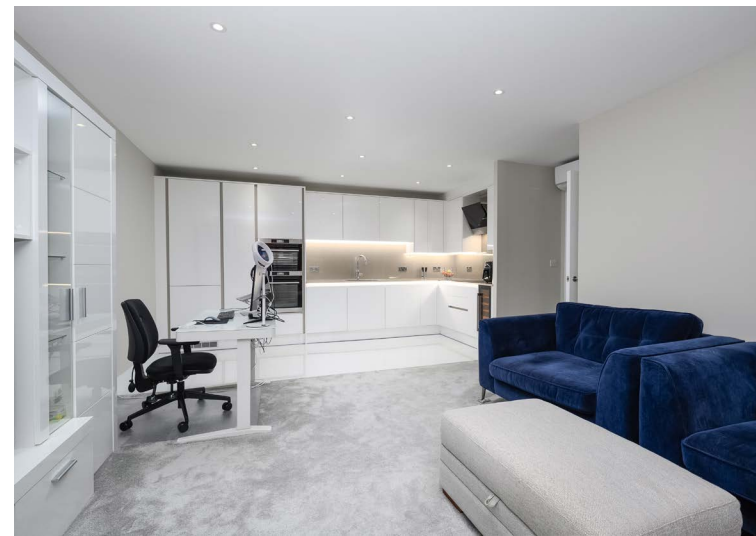
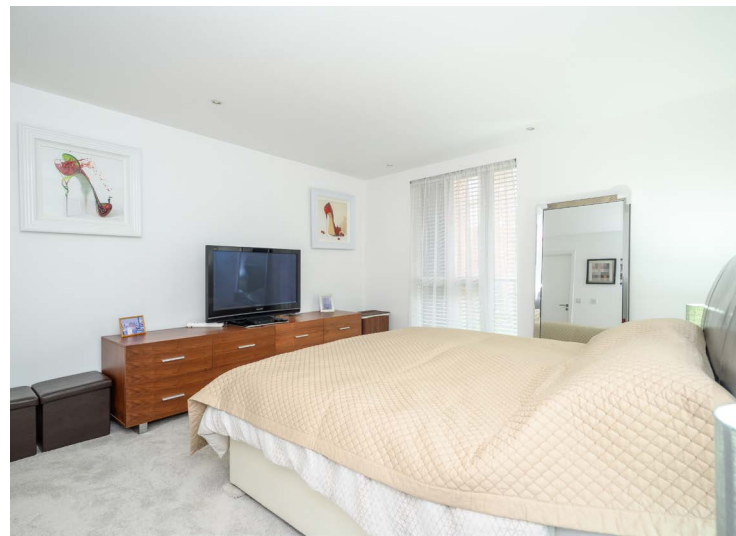
Leasehold: £425,000

| Council Tax Band: E

| EPC Rating: B

| [www.ArthurSamuel.co.uk](http://www.ArthurSamuel.co.uk)

**Leasehold:** 221 Years approximately remaining as of 2025.







Created for Arthur Samuel Estate Agents  
TOTAL APPROX. FLOOR AREA 874 SQ.FT. (81.2 SQ.M.)

Arthur Samuel Estate Agents, 1st Floor, 11 Church Street, Walton on Thames, Surrey, KT12 2QP

**Disclaimer:** These particulars, whilst believed to be accurate, are set out as a general outline only for guidance and do not constitute any part of an offer or contract. Intending purchasers should not rely on them as statements of representation of fact but must satisfy themselves by inspection or otherwise as to their accuracy. No person in this firm employment has the authority to make or give any representation or warranty in respect of the property. Please also note that we are unable to test services, fireplaces, central heating systems and all domestic appliances, so we can not verify that they are in working order. Any interested parties are advised to obtain verification from their solicitor or surveyor.



Tel: 01932 252 542 Email: [stuart@arthursamuel.co.uk](mailto:stuart@arthursamuel.co.uk)

[www.ArthurSamuel.co.uk](http://www.ArthurSamuel.co.uk)