



**Apt 306, 35 Greenland Street, Liverpool**

Offers Over **£200,000**







## Apartment 306

35 Greenland Street, Liverpool

Council Tax band: C

Tenure: Leasehold

- Modern open plan living area
- Floor-to-ceiling windows
- Contemporary kitchen with integrated appliances
- Stylish modern bathrooms (walk-in shower and bath)
- Ample built-in storage
- Plush carpeting throughout
- Dedicated utility area
- Landscaped communal gardens
- Secure modern apartment building
- On-site spa and gym access
- 24/7 Concierge
- 2 large double bedrooms



#### Bedroom 1

12' 4" x 12' 0" (3.77m x 3.65m)

#### Kitchen / Living Area

15' 8" x 12' 7" (4.77m x 3.83m)

#### Bedroom 2

10' 2" x 10' 11" (3.11m x 3.33m)

#### Hallway

11' 8" x 3' 7" (3.55m x 1.09m)

#### Bathroom

5' 7" x 6' 11" (1.69m x 2.12m)







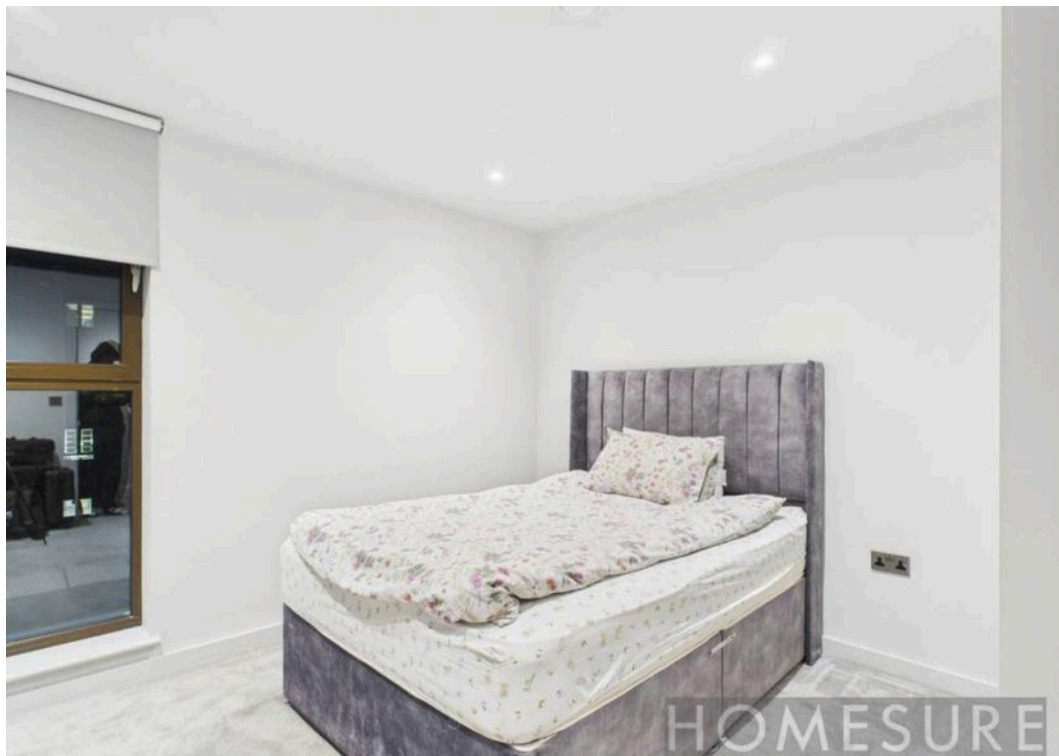
## COMMUNAL GARDEN

## GARAGE

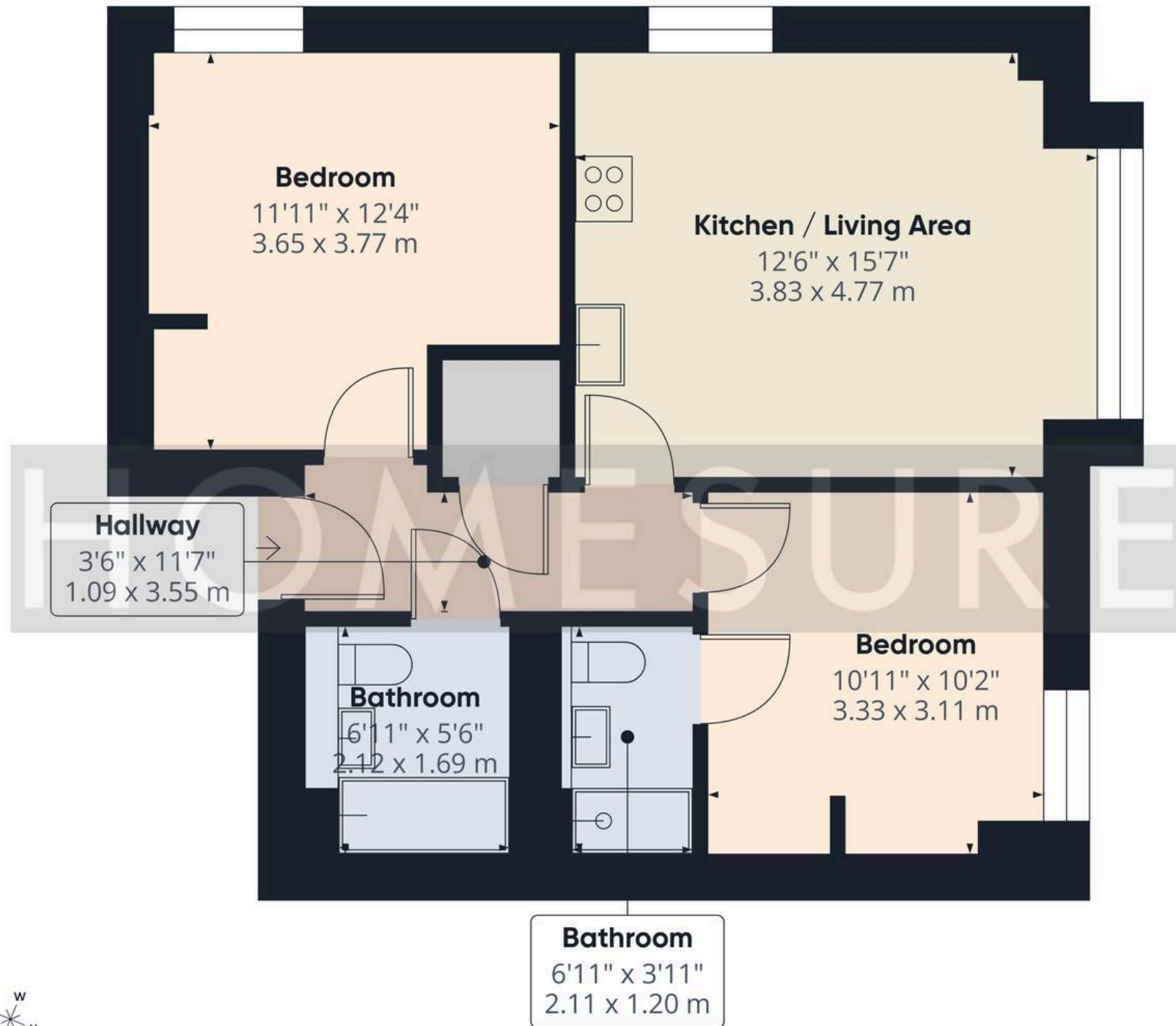
Single Garage

There is residents parking available in the garage for a monthly fee.









Approximate total area<sup>(1)</sup>

569 ft<sup>2</sup>

52.8 m<sup>2</sup>

(1) Excluding balconies and terraces

Calculations reference the RICS IPMS 3C standard. Measurements are approximate and not to scale. This floor plan is intended for illustration only.

GIRAFFE360



## Homesure Property

Homesure, 32 Allerton Road - L25 7RG

0151 722 22 22

[sales@homesureproperty.co.uk](mailto:sales@homesureproperty.co.uk)

[homesureproperty.co.uk/](https://homesureproperty.co.uk/)

