



## 27 Woodholme Court, Liverpool

Guide Price £130,000







## 27 Woodholme Court

Liverpool, Liverpool

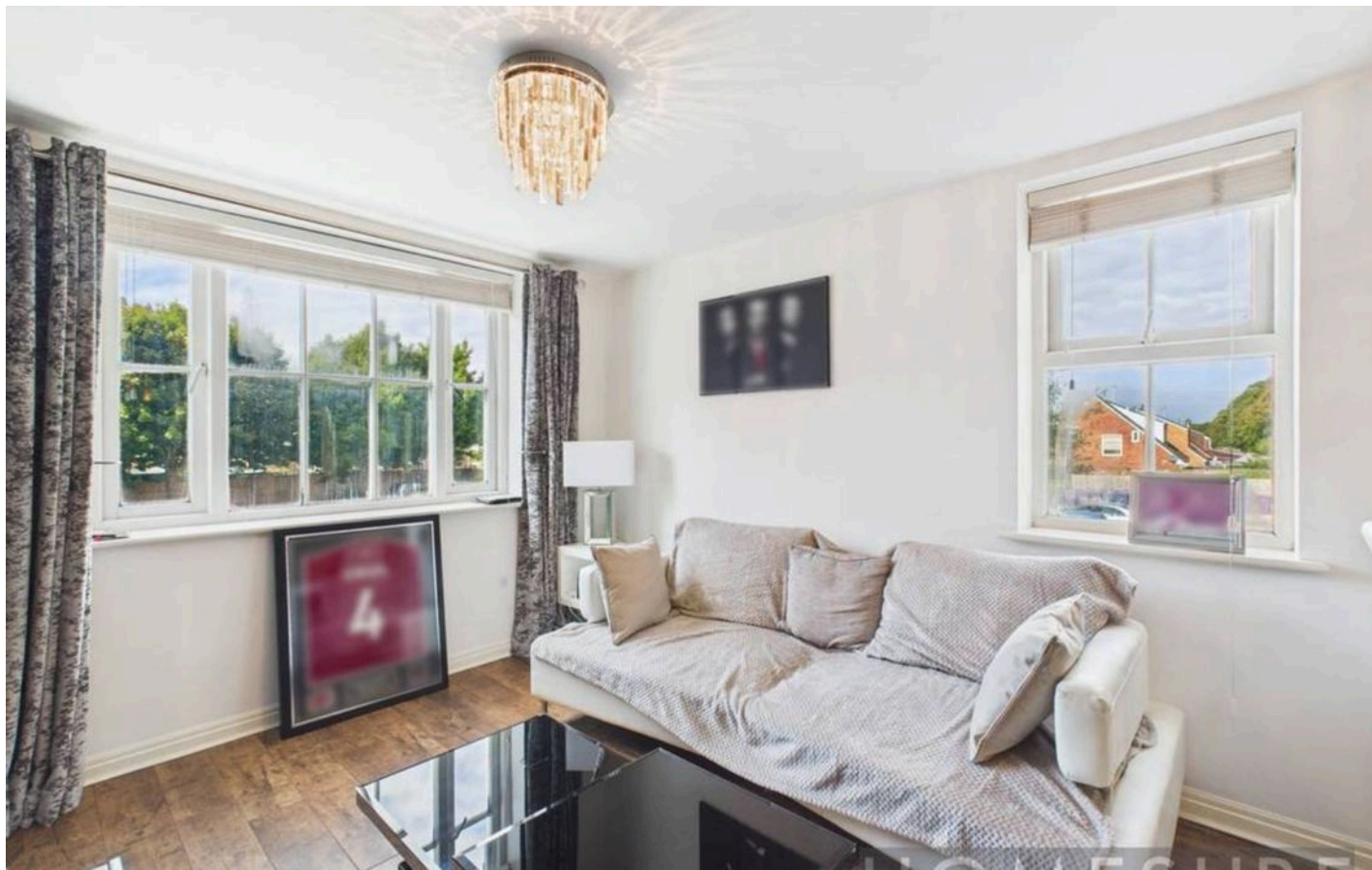
Beautifully presented modern 2-bed flat in sought-after Gateacre Village. Ideal for first-time buyers or professionals. Bright open-plan living, spacious bedrooms, ample storage, and secure parking.

Council Tax band: B

Tenure: Leasehold

- In the heart of Gateacre village
- Modern kitchen & bathroom
- Two spacious bedrooms
- Gated secure parking
- Generous living and dining space
- Built-in storage









### SECURE GATED

1 Parking Space

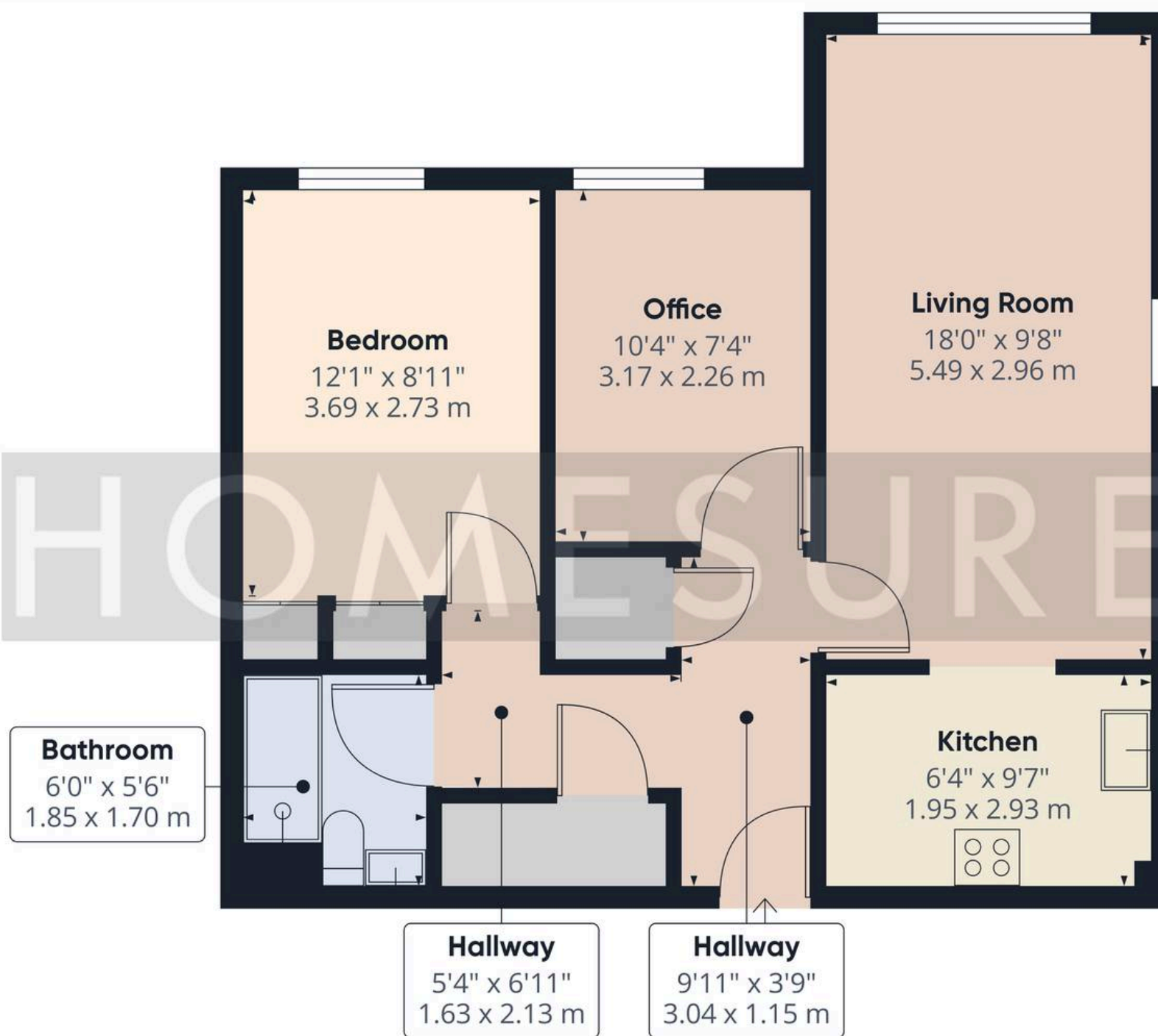
Allocated parking space through the gates at the rear of the property







HOMESURE



Approximate total area<sup>(1)</sup>  
571 ft<sup>2</sup>  
53.1 m<sup>2</sup>

(1) Excluding balconies and terraces

Calculations reference the RICS IPMS 3C standard. Measurements are approximate and not to scale. This floor plan is intended for illustration only.

GIRAFFE360





## Homesure Property

Homesure, 32 Allerton Road - L25 7RG

0151 722 22 22

[sales@homesureproperty.co.uk](mailto:sales@homesureproperty.co.uk)

[homesureproperty.co.uk/](http://homesureproperty.co.uk/)

