



5 Burbo Mansions Burbo Bank Road South, Liverpool

Offers Over £250,000





5 Burbo Mansions Burbo Bank Road South

Liverpool, Liverpool

This 2-bed coastal flat features open-plan living with stunning sea views, elegant decor, modern kitchen, luxurious bathroom, garage parking, communal gardens, and close proximity to the beach.

Council Tax band: C

Tenure: Leasehold

- SECOND FLOOR APARTMENT
- SEA VIEWS
- PRIVATE BALCONY
- OPEN PLAN LIVING AREA
- OFF-ROAD PARKING
- SECURE GARAGE PARKING
- EXTENSIVE COMMUNAL GARDENS



Living Room

14' 2" x 22' 8" (4.33m x 6.90m)

Bedroom

7' 10" x 11' 10" (2.40m x 3.61m)

Bedroom

14' 4" x 8' 0" (4.38m x 2.45m)

Kitchen

8' 7" x 13' 2" (2.61m x 4.01m)

Bathroom

5' 6" x 11' 7" (1.68m x 3.53m)

Wc

4' 10" x 3' 3" (1.47m x 1.00m)





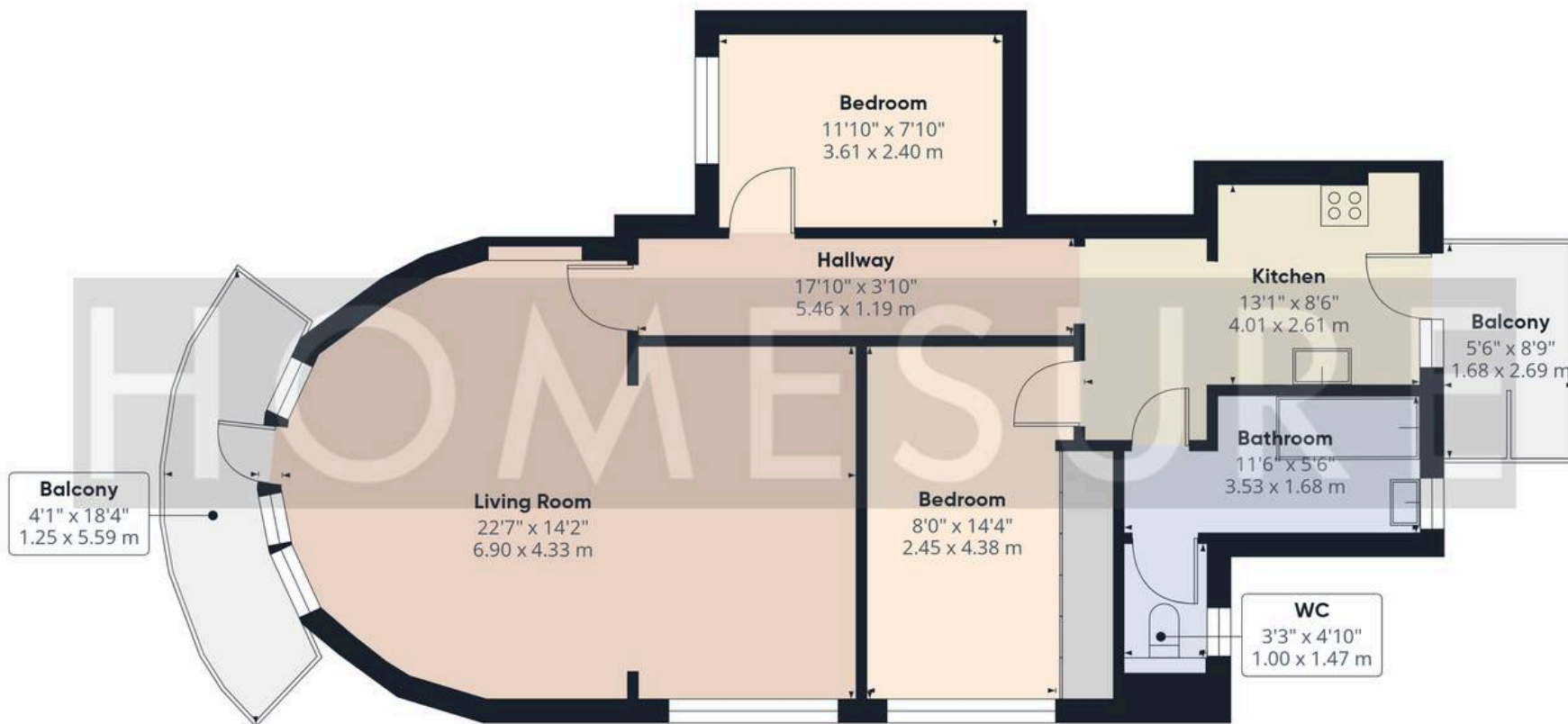
COMMUNAL GARDEN

GARAGE

Single Garage







Approximate total area⁽¹⁾

824 ft²

76.6 m²

Balconies and terraces

119 ft²

11.1 m²

(1) Excluding balconies and terraces

Calculations reference the RICS IPMS 3C standard. Measurements are approximate and not to scale. This floor plan is intended for illustration only.

GIRAFFE360



Homesure Property

Homesure, 32 Allerton Road - L25 7RG

0151 722 22 22

sales@homesureproperty.co.uk

homesureproperty.co.uk/

