



12 Stand Farm Road, Liverpool

In Excess of £200,000





12 Stand Farm Road

Liverpool, Liverpool

***NO CHAIN *** SEMI-DETACHED BUNGALOW FOR SALE *** 2 DOUBLE BEDROOMS *** MODERN FITTED KITCHEN *** SPACIOUS LOUNGE *** GOOD SIZED FRONT AND BACK GARDEN *** SINGLE GARAGE *** DRIVEWAY *** BATHROOM WITH BATH AND OVERHEAD SHOWER *** QUIET CUL-DE-SAC LOCATION ***

Council Tax band: C

Tenure: Freehold

- Generous sized plot
- Single garage and off road parking
- Good size front and back garden
- Modern fitted kitchen





FRONT GARDEN

REAR GARDEN

GARAGE

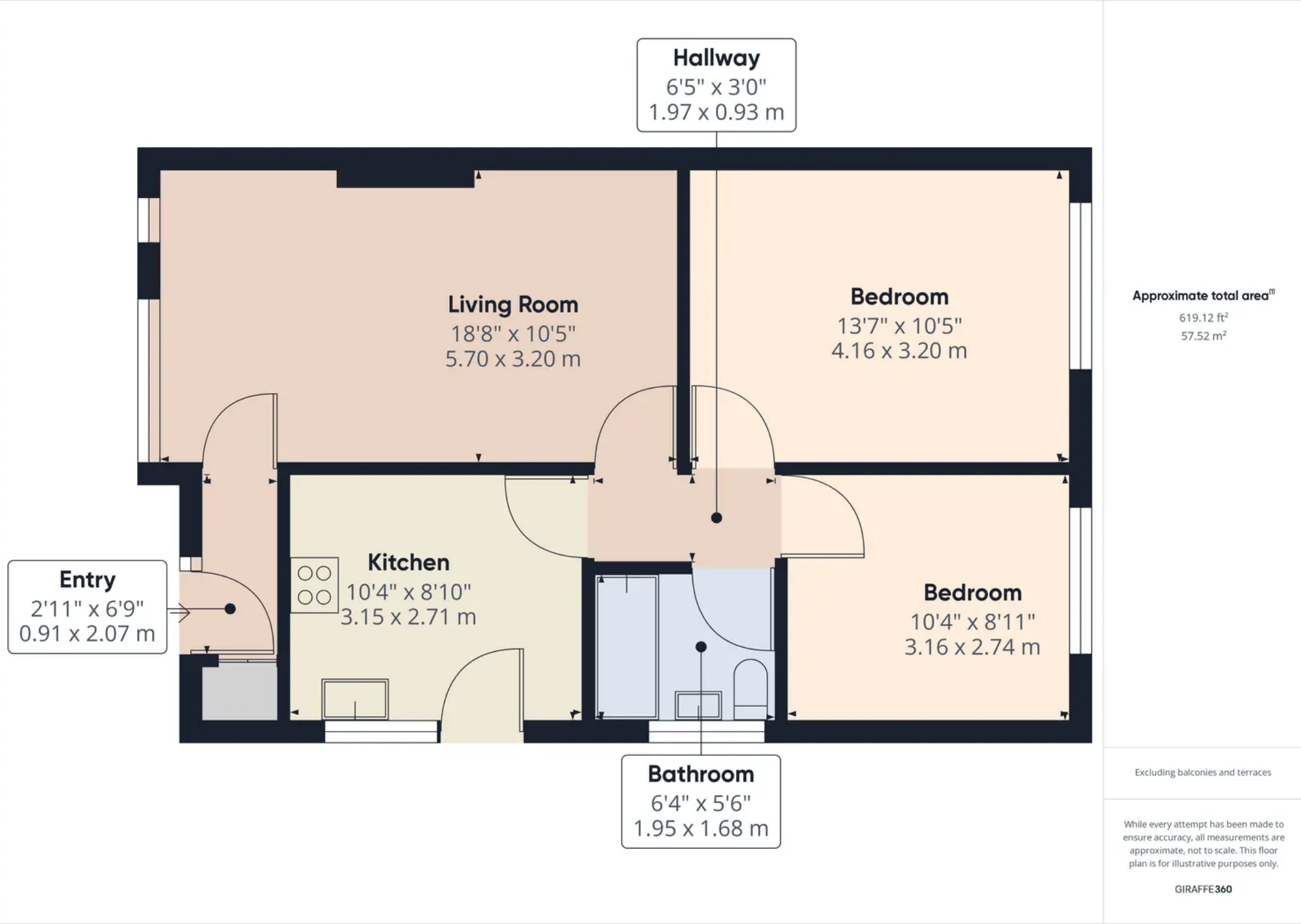
Single Garage

DRIVEWAY

1 Parking Space







Hallway
6'5" x 3'0"
1.97 x 0.93 m

Living Room
18'8" x 10'5"
5.70 x 3.20 m

Bedroom
13'7" x 10'5"
4.16 x 3.20 m

Entry
2'11" x 6'9"
0.91 x 2.07 m

Kitchen
10'4" x 8'10"
3.15 x 2.71 m

Bedroom
10'4" x 8'11"
3.16 x 2.74 m

Bathroom
6'4" x 5'6"
1.95 x 1.68 m

Approximate total area¹⁾
619.12 ft²
57.52 m²

Excluding balconies and terraces

While every attempt has been made to ensure accuracy, all measurements are approximate, not to scale. This floor plan is for illustrative purposes only.

GIRAFFE360



Homesure Property

Homesure, 32 Allerton Road - L25 7RG

0151 722 22 22

sales@homesureproperty.co.uk

homesureproperty.co.uk/

