



33 Gregory Way, Liverpool
£249,995



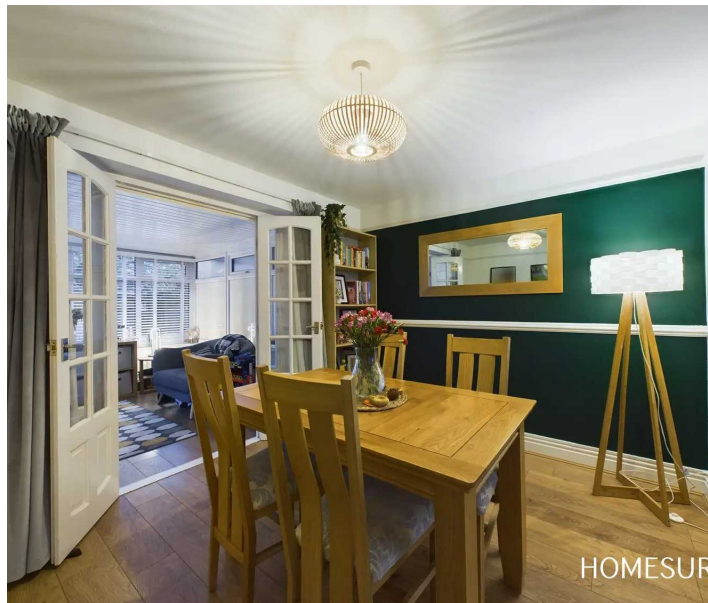
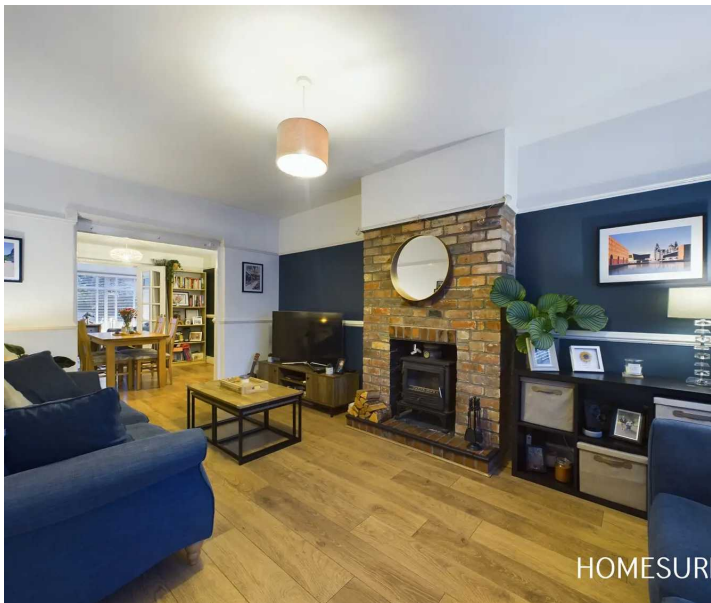


33 Gregory Way

Liverpool, Liverpool

Tenure: Leasehold

- DESIRABLE LOCATION
- 3 BEDROOMS
- 3 RECEPTION ROOMS
- OFF-ROAD PARKING
- DECKING & GARDEN
- COSY CONSERVATORY TO REAR

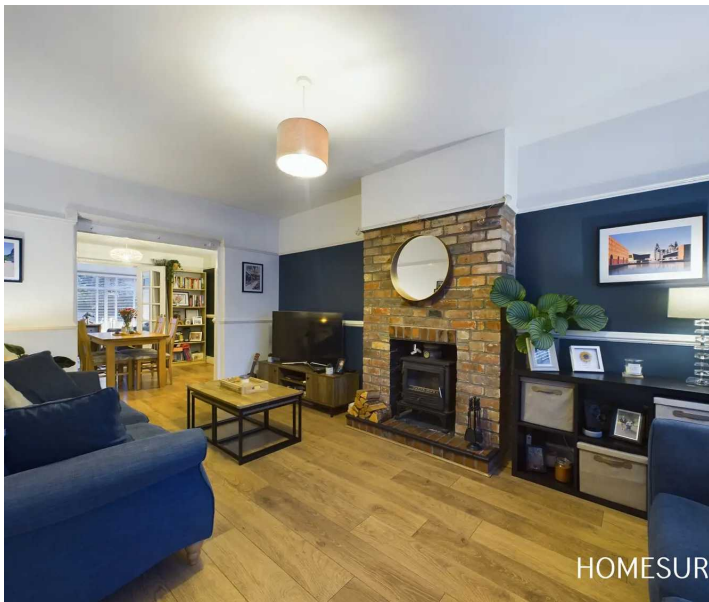


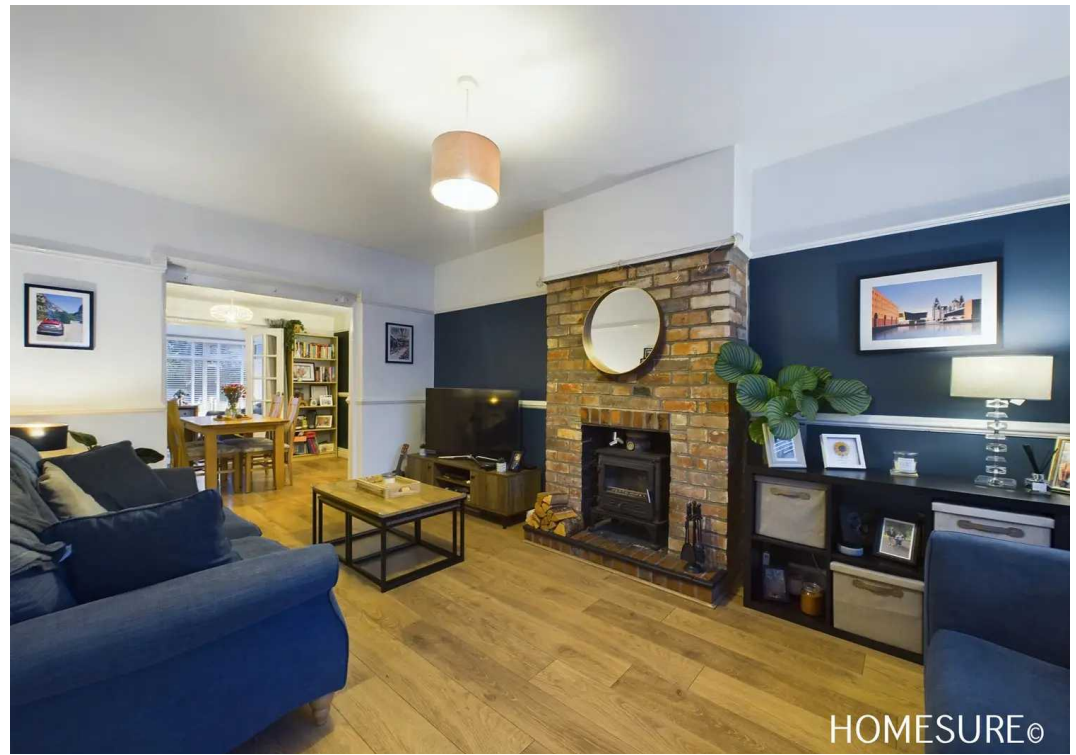


GARDEN

DRIVEWAY

2 Parking Spaces







Floor 0



Floor 1

Approximate total area⁽¹⁾

815.24 ft²

75.74 m²

(1) Excluding balconies and terraces

While every attempt has been made to ensure accuracy, all measurements are approximate, not to scale. This floor plan is for illustrative purposes only.

GIRAFFE 360



Homesure Property

Homesure, 32 Allerton Road - L25 7RG

0151 722 22 22

sales@homesureproperty.co.uk

homesureproperty.co.uk/

