



Cheere Way, Papworth Everard Cambridge  
**£300,000 Freehold**

**Sharman  
Quinney**

# Key Features



- Enclosed rear garden
- Four bedrooms
- En-Suite and Walk in wardrobe to master
- Wc on every floor
- Off road parking and Garage

Papworth Everard is a large village with a thriving community offering a pharmacy and doctors' surgery, a convenience store with Post Office, a veterinary surgery, a coffee shop, a unisex hair salon and a library. Papworth lies just 10 miles west of Cambridge and 6 miles south of Huntingdon. Transport in the village includes frequent busses to Cambridge, Huntingdon, St Neots and St. Ives.

Ground Floor

Entrance Hall

Cloakroom

Low level WC and Wash hand basin

Kitchen - 3.98m x 2.18m (13'01" x 7'02")



Dining area - 2.92m x 2.46m (9'07" x 8'01")

Lounge - 4.44m x 3.73m (14'07" x 12'03")

#### First Floor

Bedroom Two - 4.77m x 2.79m (15'08" max x 9'02" max)

Bedroom Three - 3.14m x 2.41m (10'04" x 7'11")

Bedroom Four - 2.20m x 2.18m (7'03" x 7'02" max)

#### Family Bathroom

Bath with shower over, Low level WC and Wash hand basin.

#### Second Floor

Bedroom One - 3.68m x 3.55m (12'01" max x 11'08")

Giving access to walk in wardrobe and En-Suite.

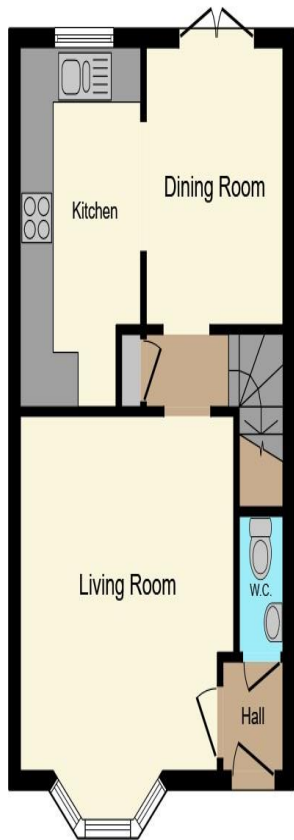
#### En-Suite to master

Shower cubicle, Wash hand basin and low level WC.

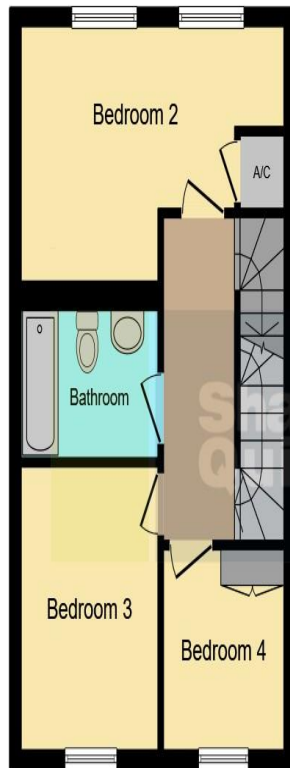
#### Outside

Front and Rear garden, garage to rear with allocated space in front.

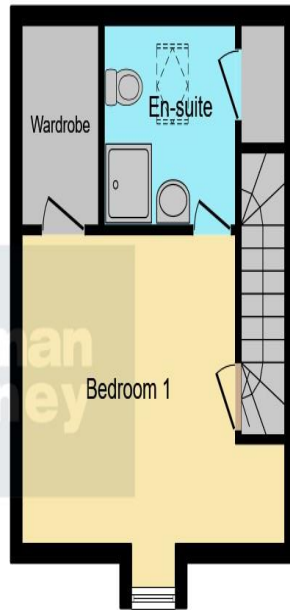




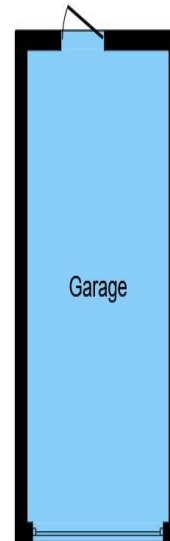
**Ground Floor**



**First Floor**



**Second Floor**



**Garage**


This floor plan is for illustrative purposes only. It is not drawn to scale. Any measurements, floor areas (including any total floor area), openings and orientation are approximate. No details are guaranteed, they cannot be relied upon for any purpose and they do not form part of any agreement. No liability is taken for any error, omission or misstatement. A party must rely upon its own inspection(s). Powered by [www.focalagent.com](http://www.focalagent.com)

To view this property call Sharman Quinney on:  
**01954 710620**

# Selling your property?

Contact us to arrange a **FREE** home valuation.

 01954 710620

 13 High Street, Cambourne, CAMBRIDGE,  
Cambridgeshire, CB23 6JX

 [cambourne@sharmanquinney.co.uk](mailto:cambourne@sharmanquinney.co.uk)

 [www.sharmanquinney.co.uk](http://www.sharmanquinney.co.uk)



 SCAN ME



Sharman Quinney Holdings Limited is registered in England and Wales under company number 4174227, Registered Office is Cumbria House, 16-20 Hockliffe Street, Leighton Buzzard, Bedfordshire, LU7 1GN. VAT Registration Number is 500 2481 05.

1: These particulars do not constitute part or all of an offer or contract. 2: The measurements indicated are supplied for guidance only and as such must be considered incorrect. 3: Potential buyers are advised to recheck the measurements before committing to any expense. 4: Sharman Quinney has not tested any apparatus, equipment, fixtures, fittings or services and it is the buyers interests to check the working condition of any appliances. 5: Sharman Quinney has not sought to verify the legal title of the property and buyers must obtain verification from their legal representative. 6: Intending purchasers will be asked to produce identification documentation at a later stage and we would ask your co-operation in order that there will be no delay in agreeing the sale. Ref: CSQ203822 - 0001

